
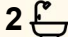



50/3 Burbury Close, Barton

3  2  2 

Elevated Luxury Living with Sweeping Views in the Heart of Barton

FOR RENT

Please Call

AGENCY

LJ Hooker Manuka
(02) 6239 5551

Located on the fifth floor of the prestigious Realm precinct, this spacious three-bedroom apartment offers house-sized living with an elevated east-facing outlook across Barton to Mt Ainslie.

Spanning approximately 141m² internally, the home features a light-filled open-plan living and dining area flowing to a covered balcony with sweeping leafy views. The upgraded kitchen includes an oversized island, ample storage, and premium Miele and Bosch appliances.

The well-designed floor plan separates the oversized main suite - complete with walk-in robe and luxurious ensuite - from the two additional bedrooms, both with built-in wardrobes and access to a stylish main bathroom. A powder room, internal laundry, and excellent storage add further practicality.

Positioned within one of Barton's most sought-after developments, residents enjoy premium amenities, secure parking for two cars, storage cages, EV charging, and easy access to restaurants,

All information contained therein is gathered from relevant third parties sources. We cannot guarantee or give any warranty about the information provided. Interested parties must rely solely on their own enquiries.

 **LJ Hooker**

transport, and leading schools.

Features include:

- East-facing fifth-floor position within the sought-after Realm precinct
- Elevated views across Barton, Manuka Oval and Mt Ainslie
- Walking distance to popular dining and bars including Med, Ostani, Louis, Leyla Bar, and Maple & Clove
- Spacious open-plan living and dining area
- Designer kitchen with Miele appliances and Bosch induction cooktop
- Custom built-in shelving and cabinetry in the living area
- Retractable insect screens to balcony doors
- Full-length custom curtains and Roman blinds throughout
- Private main suite with walk-in robe and luxury ensuite featuring underfloor heating
- Built-in wardrobes to bedrooms two and three
- Modern main bathroom with underfloor heating plus separate powder room
- Ducted reverse-cycle heating and cooling
- Covered tiled balcony with stunning outlook
- Two secure basement car spaces plus two storage cages
- Resident vehicle charging facilities
- Within the Telopea Park School and Narrabundah College catchment areas
- Professionally managed complex with experienced strata committee
- Excellent public transport access to Civic and Woden

EER: 6

Ceiling installation is Unknown

Pets: Prospective tenants must obtain prior consent from the owner and body corporate (if applicable) to keep pets on the premises.

Please follow the link below to apply for any of our properties:

<https://www.2Apply.com/x/it6SAWk>

Open times are subject to change. Please ensure you have registered to the inspection time so you will be notified of any changes or cancellations.

Please note: Our Leasing Consultant will send you an updated rental list each week to keep you informed of our current rental properties. If at any time you would like your email to be removed please reply UNSUBSCRIBE to the email.

Disclaimer:

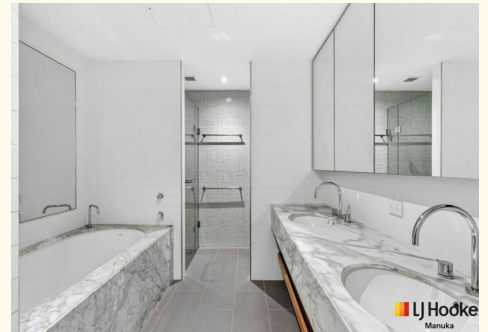
While all care has been taken in compiling information regarding properties marketed for rent or sale, we accept no responsibility and disclaim all liabilities regarding any errors or inaccuracies contained herein. All parties should rely on their own investigation to validate the information provided.

EER 

MORE DETAILS

Property ID 1UPQFMF
Property Type Apartment

LJ Hooker Manuka (02) 6239 5551
20 Bougainville Street, MANUKA ACT 2603
manuka.ljhooker.com.au | manuka@ljhmanuka.com.au



All information contained therein is gathered from relevant third parties sources.
We cannot guarantee or give any warranty about the information provided.
Interested parties must rely solely on their own enquiries.