

Bardon, 8 Eastment Street

SOLID POST WAR HOME IN RAINWORTH CATCHMENT

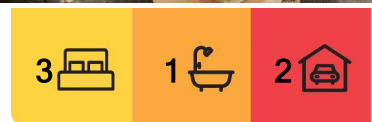
BREAKLEASE – 6 MONTHS @ \$825 Available 1st May

Situated in an elevated position, in one of Bardon's most sought-after pockets; a quiet family friendly enclave within the popular Rainworth State School catchment. This delightful solid rendered brick home is situated on a generous 632m2 block and has a private leafy outlook.

Upon entering this wonderful home, you'll discover a quality, well maintained property with a stylish chic white interior and polished hardwood timber flooring. The elevation combined with a multitude of windows and doors ensures a plentiful amount of light and breezes throughout the home. Ideally designed for easy living all on one level, boasting spacious living spaces and a modern kitchen flowing directly from the front verandah to the covered rear deck, giving seamless integration of indoor and outdoor spaces, for ease of



Disclaimer: All information contained therein is gathered from relevant third parties sources. We cannot guarantee or give any warranty about the information provided. Interested parties must rely solely on their own enquiries.



For Lease
Please Call

View
ljhooker.com.au/1EK3H31

LJ Hooker Annerley | Yeronga | Salisbury
(07) 3848 7369

entertaining. The huge rear deck is set in a tranquil, private setting overlooking the child friendly grassed yard, ideally positioned for weekend BBQ's and family get togethers with easy supervision of the kids while playing.

The lower level consists of a double garage, laundry and plenty of storage/workshop area.

Situated in a tightly held pocket of leafy Bardon, close to parks, Bardon shed cafe, public transport, and only 4kms to the CBD. Within the popular Rainworth State Primary and Indooroopilly State High School catchment areas, and in close proximity to prominent private schools such as Stuartholme and BBC.

Features of 8 Eastment Street at a glance:

- 3 queen sized bedrooms - all with built ins, fans and air-conditioning
- Stylish kitchen with SS European appliances including dishwasher
- Modern bathroom plus separate toilet
- Double lock up garage plus loads of storage/workshop
- Ceiling fans and split system air conditioning throughout
- Fully fenced and grassed yard
- Landscaped gardens with plenty of room for a pool
- Large laundry downstairs
- Within the Rainworth State Primary School catchment
- Within the Indooroopilly State High School catchment

BOOK AN INSPECTION ONLINE - ITS EASY!

Click on the *Book Inspection* or *Request an Inspection* Button under the open for inspections times

*** By registering for an inspection, you will be INSTANTLY informed of any updates, changes or cancellations for your property appointment. If no one registers for an inspection time - then that inspection may not proceed. If there are no times set for this property yet, STILL REGISTER and as soon as times are set, you will be advised of the day and time ****

Disclaimer: Whilst every care is taken in the preparation of the information contained herein, we will not be held liable for any errors in typing or information. All information is considered correct at the time of writing and any interested parties should satisfy themselves in this respect



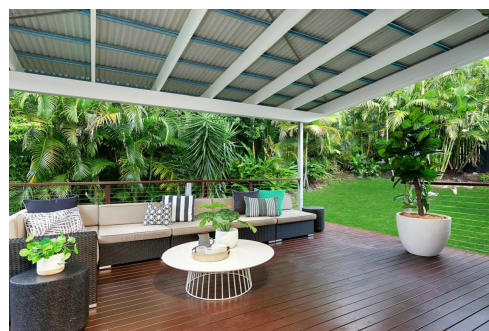
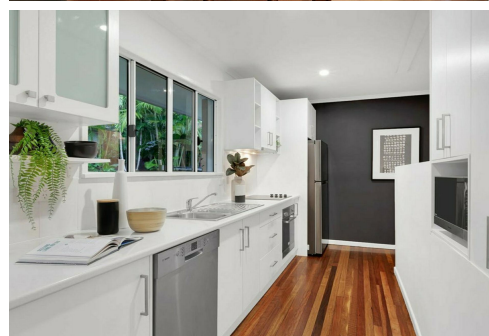
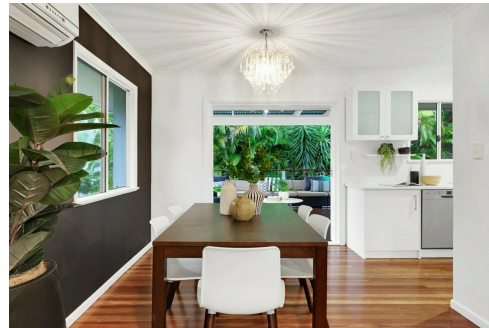
Disclaimer: All information contained therein is gathered from relevant third parties sources. We cannot guarantee or give any warranty about the information provided. Interested parties must rely solely on their own enquiries.

**LJ Hooker Annerley | Yeronga |
Salisbury
(07) 3848 7369**

More About this Property

Property ID	1EK3H31
Property Type	House
Land Area	632 sqm
Including	Air Conditioning Balcony Secure Parking

LJ Hooker Annerley | Yeronga | Salisbury (07) 3848 7369
443 Ipswich Road, ANNERLEY QLD 4103
annerleyyeronga.ljhooker.com.au | admin@ljhookerproperty.com.au



Disclaimer: All information contained therein is gathered from relevant third parties sources.
We cannot guarantee or give any warranty about the information provided. Interested parties must rely solely on their own enquiries.

**LJ Hooker Annerley | Yeronga |
Salisbury
(07) 3848 7369**



8 EASTMENT STREET, BARDON

This plan is not to scale. Areas and dimensions are approximate and therefore plan should only be used for illustrative purposes. Plants are decorative only. Floor Plan by wideangles.com.au

INT: 194 sqm
EXT: 34 sqm
TOTAL: 228 sqm