



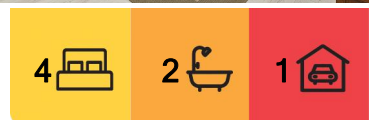
## Balgowlah, 2/16 Maretimo Street

Spacious, Top-Floor, 4 Bedroom Duplex with Garden

Presenting a light, bright, modern and contemporary generously sized apartment in a super convenient location. This lovely apartment enjoys access to a large enclosed shared garden and aboveground pool.

Property features:

- Four generously sized bedrooms
- Master with ensuite, walk in robe & north facing balcony
- Verandah off the sunroom
- Internal Laundry
- Separate living and dining areas
- Modern appliances in the kitchen
- Covered carport
- One of only 2 in the block
- Close to Balgowlah Heights Primary School, Manly Beach and the city



**For Lease**  
Please Call

**View**  
[ljhooker.com.au/18Z0F78](http://ljhooker.com.au/18Z0F78)

**Contact**  
**Arthur Marie**  
0435 899 906  
[arthur@ljhseaforth.com.au](mailto:arthur@ljhseaforth.com.au)



**Disclaimer:** All information contained therein is gathered from relevant third parties sources. We cannot guarantee or give any warranty about the information provided. Interested parties must rely solely on their own enquiries.

**LJ Hooker Seaforth**  
**(02) 9948 7080**

- Stroll to Balgowlah Boys, St Cecelia's and city buses as well as Balgowlah Heights & Seaforth Village

\*To note: Pool in photos is not included\*

## More About this Property

Property ID	18Z0F78
Property Type	DuplexSemi-detached
Including	Toilets (2)

**Arthur Marie 0435 899 906**  
Leasing Consultant | [arthur@ljhseaforth.com.au](mailto:arthur@ljhseaforth.com.au)

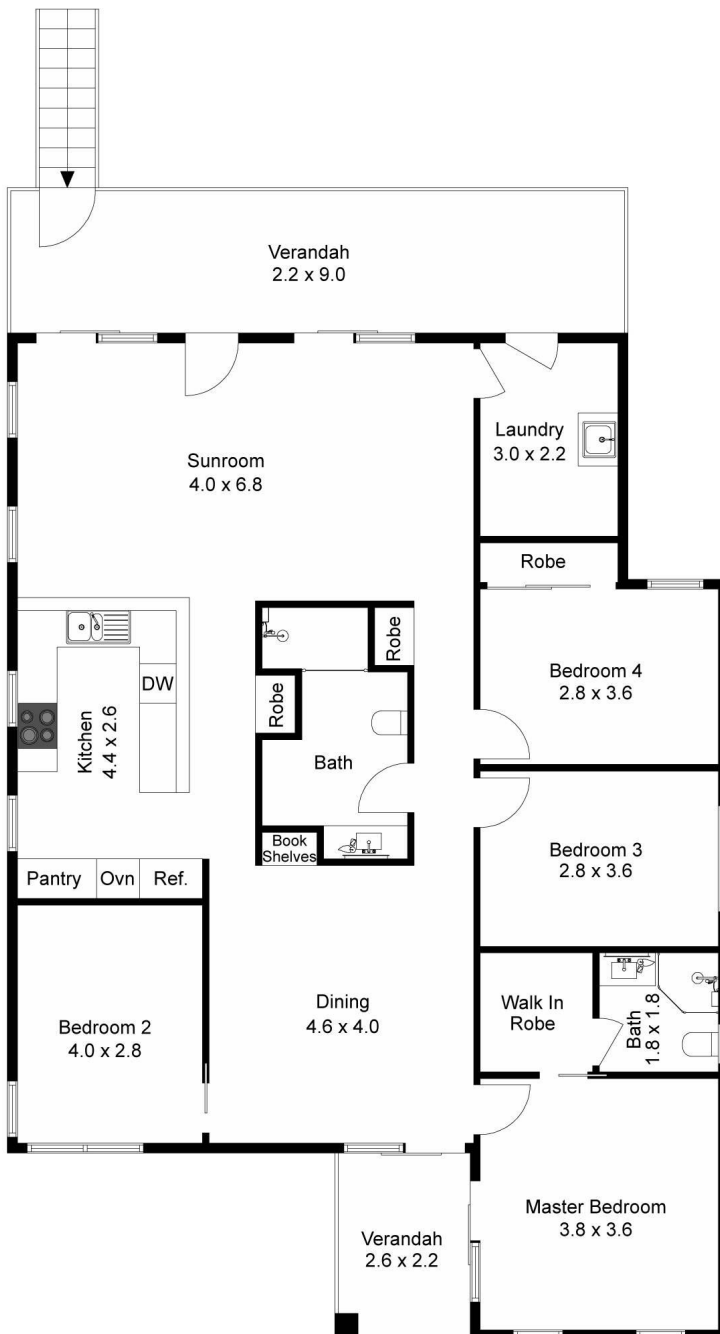
**LJ Hooker Seaforth (02) 9948 7080**  
553 Sydney Road, SEAFORTH NSW 2092  
[seaforth.ljhooker.com.au](http://seaforth.ljhooker.com.au) | [seaforth@ljhseaforth.com.au](mailto:seaforth@ljhseaforth.com.au)



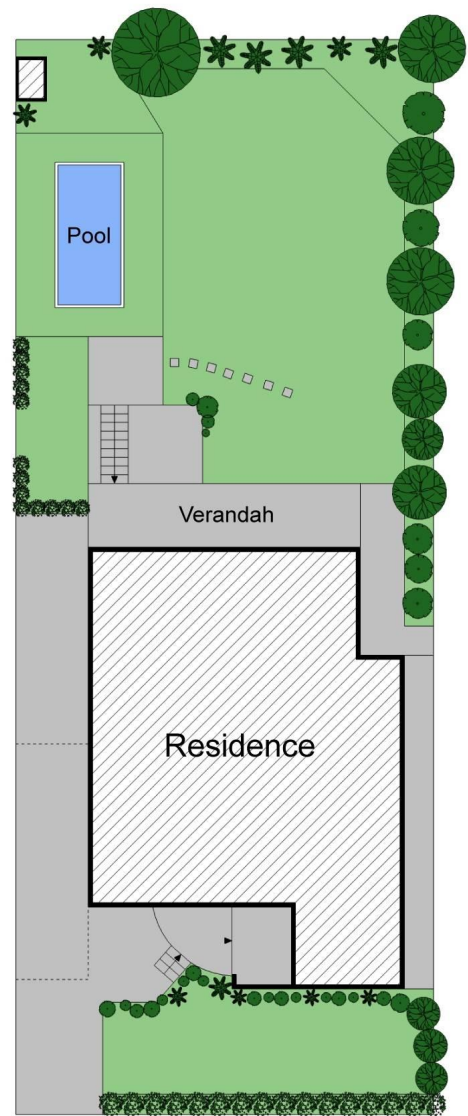
**Disclaimer:** All information contained therein is gathered from relevant third parties sources. We cannot guarantee or give any warranty about the information provided. Interested parties must rely solely on their own enquiries.

**LJ Hooker Seaforth**  
**(02) 9948 7080**





First Floor



Site Plan