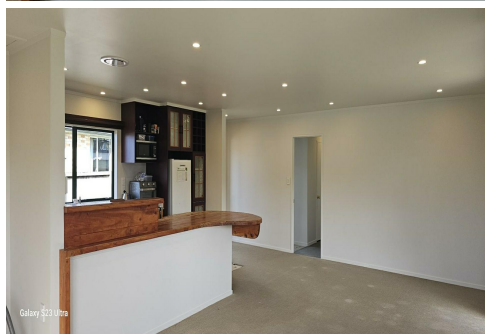




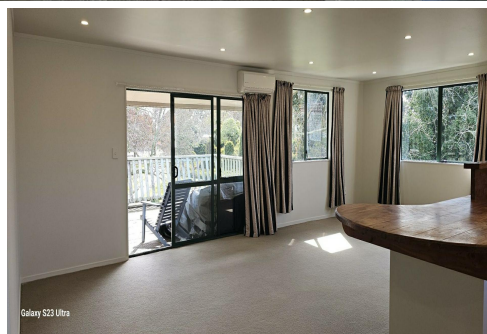
Galaxy S23 Ultra



Galaxy S23 Ultra



Galaxy S23 Ultra



Galaxy S23 Ultra

Bader, 9A Trigg Place

Family Home Overlooking Park

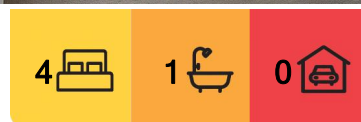
A warm and inviting four-bedroom home that combines space, sunlight, and location in one beautiful package. Perfectly positioned overlooking Mellville Park, this freshly painted property offers an ideal setting for families or professionals seeking comfort and convenience in a friendly, established neighbourhood.

Step inside and you'll immediately notice the natural light streaming through large windows, giving the home a bright, uplifting feel throughout the day. The layout is designed with practicality in mind, featuring a tidy bathroom and a separate toilet - a real bonus for busy households.

The living spaces are warm and spacious, with a sense of openness that makes it easy to feel at home. Whether you're hosting friends or enjoying a quiet night in, the sun-soaked lounge and dining areas offer the perfect setting. Fresh paint throughout the home gives it a clean, modern feel.



Disclaimer: All information contained therein is gathered from relevant third parties sources. We cannot guarantee or give any warranty about the information provided. Interested parties must rely solely on their own enquiries.



For Lease
\$640 per week

View
By Appointment

Contact
Harriette Lawson
022 013 5824
harriette.lawson@ljhooker.co.nz

LJ Hooker Hamilton City
(07) 834 1161
Specialist Marketing Limited

Outside, you'll enjoy serene views across Mellville Park - a lovely green space right on your doorstep that brings nature to your everyday life. This quiet cul-de-sac location means minimal traffic and added privacy, while still being incredibly convenient. The local hospital is just minutes away, making this home an ideal choice for healthcare professionals or anyone who values being close to essential services. Schools, shops, and public transport options are all nearby, making daily life a breeze.

Rent is set at \$640 per week, with four weeks' bond and one week's rent required in advance.

Viewing or application

<https://apply.tenant.co.nz/tps7658>

More About this Property

Property ID	SAHYU
Property Type	House
Licensed Real Estate Agents (REAA2008)	

Harriette Lawson 022 013 5824

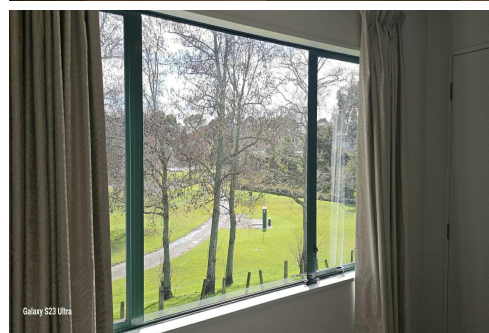
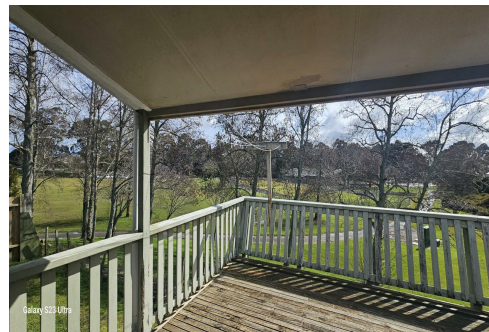
Property Manager | harriette.lawson@ljhooker.co.nz

LJ Hooker Hamilton City (07) 834 1161

Specialist Marketing Limited

11B Somerset Street, HAMILTON NZ 3289

hamiltoncity.ljhooker.co.nz | hamiltoncity@ljhooker.co.nz



Disclaimer: All information contained therein is gathered from relevant third parties sources.

We cannot guarantee or give any warranty about the information provided. Interested parties must rely solely on their own enquiries.

LJ Hooker Hamilton City

(07) 834 1161

Specialist Marketing Limited