



Leased



14 Capri Close, Avalon Beach

## 4 bedroom home with Pittwater views

Suspended amongst the peaceful and serene gum trees of Avalon Village this exceptional family home is beautifully unparalleled. Inviting the outdoors inside at every turn, with integrated, glass-wrapped living spaces across two levels this property indulges in light and bright open planned interiors.

### Property Features

- 4 spacious bedrooms with built in robes
- Two expansive living zones and study, and hardwood timber floors throughout
- Three modern bathrooms
- Sleek CaesarStone kitchen with butlers' pantry
- Floor-to-ceiling glass frames the views with superb flow to expansive entertaining decks
- Master suites on each floor, ideal for teen retreat or guest accommodation
- Double carport, Jacuzzi spa and separate deck
- Split system air-conditioning

Please note lease is up until the 30/11/26.

Designed with an emphasis on comfort, privacy and style, its quiet

All information contained therein is gathered from relevant third parties sources. We cannot guarantee or give any warranty about the information provided. Interested parties must rely solely on their own enquiries.

4 🏠 3 🚿 2 🚗

### FOR RENT

Please Call

### AGENTS

Sian Uther  
0439 844 743  
sian.uther@ljhavalon.com.au

Jessie Kranenburg  
0459 568 443  
leasing@ljhavalon.com.au

### AGENCY

LJ Hooker Avalon Beach  
(02) 9973 2999



cul-de-sac setting delivers spectacular Pittwater views with a sunny northeast aspect.

**Disclaimer:**

All information contained herewith, including but not limited to the general property description, price and the address, is provided to LJ Hooker Avalon Beach by third parties. We have obtained this information from sources we believe to be reliable; however, we cannot guarantee its accuracy. The information contained herewith should not be relied upon and you should make your own enquiries and seek advice in respect of this property or any property on this website.

**MORE DETAILS**

Property ID	WW1F58
Property Type	House
Including	Ensuite
	Built-in-Robes
	Close to Transport
	Water Views

**Sian Uther 0439 844 743**

Head of Property Management | Licensed Real Estate Agent | [sian.uth@ljhavalon.com.au](mailto:sian.uth@ljhavalon.com.au)

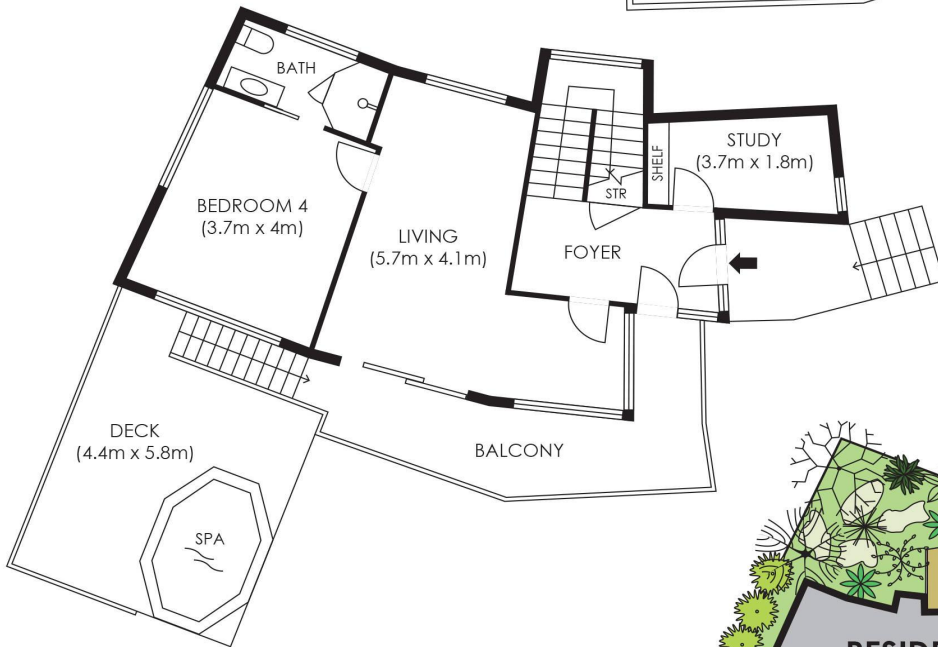
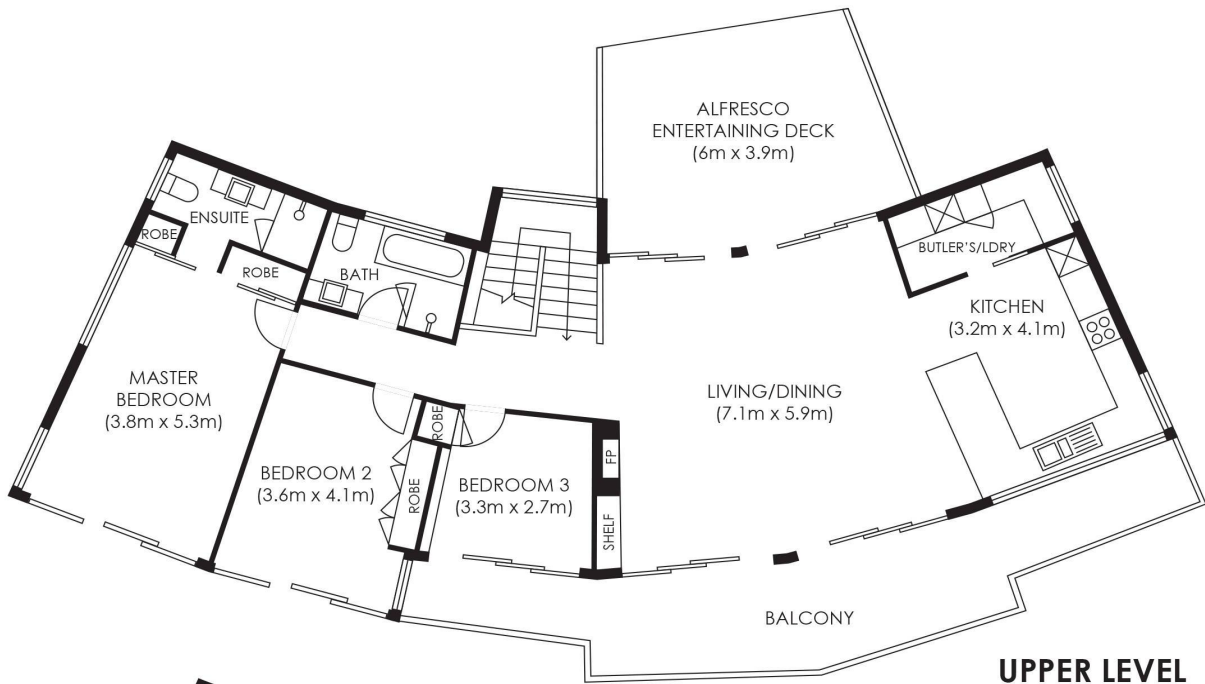
**Jessie Kranenburg 0459 568 443**

Leasing Consultant | [leasing@ljhavalon.com.au](mailto:leasing@ljhavalon.com.au)

**LJ Hooker Avalon Beach (02) 9973 2999**

64 Old Barrenjoey Road, AVALON BEACH NSW 2107  
[avalonbeach.ljhooker.com.au](http://avalonbeach.ljhooker.com.au) | [avalonbeach@ljhooker.com.au](mailto:avalonbeach@ljhooker.com.au)





**SITE PLAN  
not to scale**



Plans are intended as a guide only. No representations or warranties of any nature whatsoever are given or intended and any person using this information should always rely on their own enquiries. j interiors - real estate floor plans. jinteriors.info@gmail.com

**14 CAPRI CLOSE, AVALON BEACH**

**scale 1:125**

All information contained therein is gathered from relevant third parties sources. We cannot guarantee or give any warranty about the information provided. Interested parties must rely solely on their own enquiries.

