



LJ Hooker


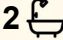
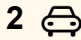


LJ Hooker



LJ Hooker

39a Constellation Drive, Australind

3  2  2 

Prime Treendale Location!

Perfectly positioned with Treendale Shopping Centre right at your doorstep, this modern unit offers comfort, convenience, and low-maintenance living.

Featuring three spacious bedrooms all with built-in robes, and two stylish bathrooms, this home is ideal for those seeking easy living without compromise. The contemporary kitchen flows seamlessly into the open-plan family and dining area, creating a warm and functional living space.

Enjoy ducted reverse-cycle air-conditioning throughout, low-maintenance gardens, a large outdoor patio, and a double garage for secure parking.

Located just a short stroll to local parks and Treendale Primary School, this home ticks all the boxes for families or professionals alike.

TO INSPECT THIS PROPERTY

click on the button 'Book an inspection time' enter your details and choose an appointment time. If no inspection times are listed, you will be notified once a time is scheduled.

For further information regarding this property, please contact Erin Emerson on 9791 6880.

FOR RENT

Please Call

AGENTS

Erin Emerson

leasing@ljhsouthwest.com.au

AGENCY

LJ Hooker Property South West WA
(08) 9791 6880

All information contained therein is gathered from relevant third parties sources.
We cannot guarantee or give any warranty about the information provided.
Interested parties must rely solely on their own enquiries.



MORE DETAILS

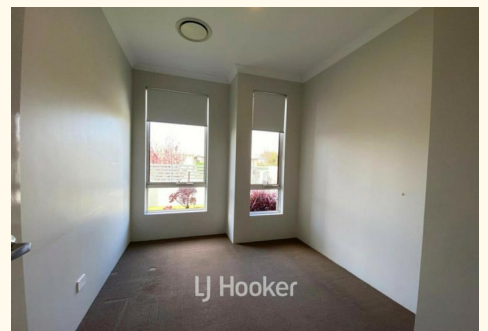
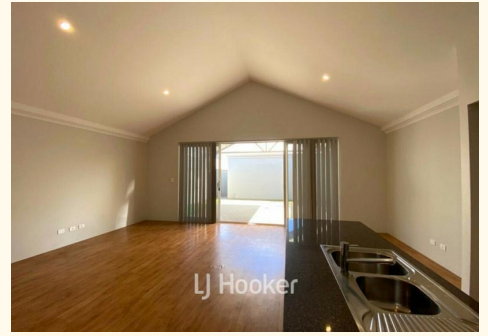
Property ID 197AHND
Property Type Unit
Including Air Conditioning
Toilets (2)

Erin Emerson

Leasing Officer " Bunbury | leasing@ljhsouthwest.com.au

LJ Hooker Property South West WA (08) 9791 6880

130 Victoria Street, BUNBURY WA 6230
southwestwa.ljhooker.com.au | bunbury@ljhsouthwest.com.au



All information contained therein is gathered from relevant third parties sources.
We cannot guarantee or give any warranty about the information provided.
Interested parties must rely solely on their own enquiries.