



## Aspley, 53 Cara Street

DELIGHTFUL AND PERFECTLY POSITIONED LOWSET ASPLEY HOME!!

Look no further, your new home awaits you! Situated in a private cul de sac in an established neighbourhood, enjoy the top rate privacy offered in this home. Great location with ease of access to all the north side of Brisbane has to offer!

This brick 3 bedroom home is in top condition with 3 spacious bedrooms with built ins and good sized living, dining and kitchen. The property is a lowset home, with level continuation throughout the living and bedroom spaces.

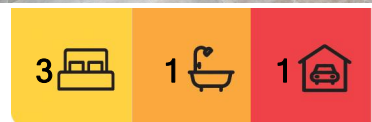
Property has been freshly painted internally.

Features include:

- \* Well set back from the street with spacious front yard
- \* Newly painted interior



**Disclaimer:** All information contained therein is gathered from relevant third parties sources. We cannot guarantee or give any warranty about the information provided. Interested parties must rely solely on their own enquiries.



**For Lease**  
Please Call

**View**  
[ljhooker.com.au/39RFF1R](http://ljhooker.com.au/39RFF1R)

**Contact**  
**Bella Garside**  
[office.aspley@ljhooker.com.au](mailto:office.aspley@ljhooker.com.au)

**LJ Hooker Aspley | Chermide**  
**(07) 3263 6022**

- \* Air conditioned living area
- \* Three queen sized bedrooms, all with built in wardrobes and modern ceiling fans
- \* Third bedroom has separate outdoor entry from back with sliding security door.
- \* Low maintenance yard with beautiful Jacaranda trees decorating the front lawn and river rock garden bed features
- \* Garden shed at rear of property
- \* Fenced back yard
- \* Privacy lattice along front of house
- \* Large kitchen and adjoining sitting area with sliding door access to rear patio
- \* Gorgeous wooden look bench tops
- \* Double carport hidden from street view
- \* Security screens and doors throughout
- \* 5 minute drive to Geebung Train Station, hop on a train straight into the city! Close to Chermide bus terminal too.

Enjoy easy access to the Bruce Highway via Gympie Road. Local majors St Vincent's and Prince Charles Hospitals, Westfield Chermide. Catch the bus to the City in under 45 minutes and drive to the airport in around 18 minutes via the Airport Link Tunnel. Close to Zillmere train station.

Would you like to view this property?

Go directly to <https://aspley.ljhooker.com.au> to register to inspect.

PLEASE NOTE, if you do not register online, we cannot notify you of any time changes or cancellations to inspections.

To apply please submit an online application via 2Apply at the following website - <https://www.2apply.com.au/login>

Alternatively, you can download and print our application by visiting our website - <https://aspley.ljhooker.com.au/renting/tenancy-application-form>

All information contained herein is gathered from sources we consider to be reliable. However, we cannot guarantee or give any warranty about the information provided. Interested parties must solely rely on their own enquiries.



**LJ Hooker Aspley | Chermide**  
**(07) 3263 6022**

**Disclaimer:** All information contained therein is gathered from relevant third parties sources. We cannot guarantee or give any warranty about the information provided. Interested parties must rely solely on their own enquiries.

## More About this Property

<b>Property ID</b>	39RFF1R
<b>Property Type</b>	House
<b>Land Area</b>	562 sqm
<b>Including</b>	Air Conditioning Built-in-Robes

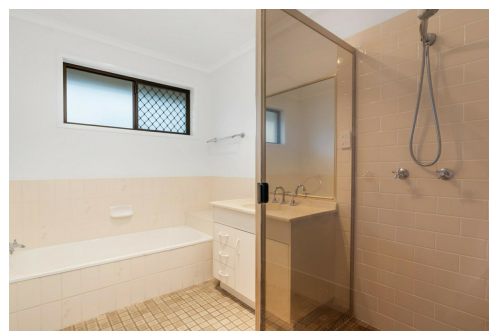
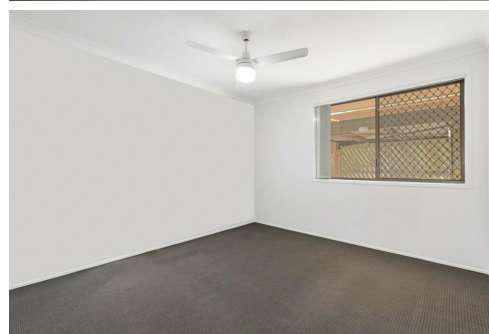
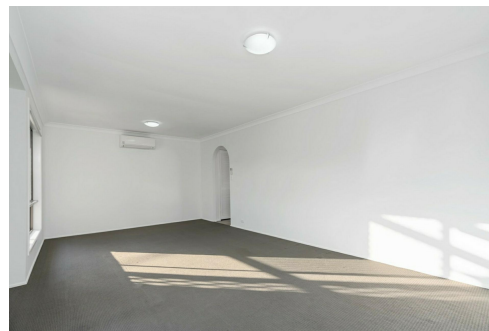
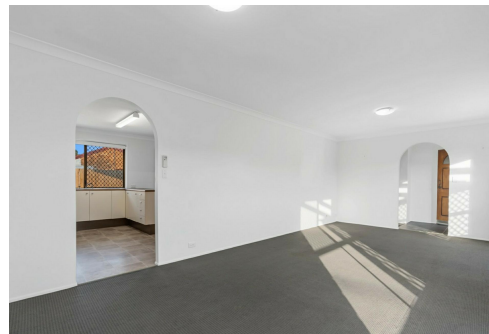
### Bella Garside

Receptionist | [office.aspley@ljhooker.com.au](mailto:office.aspley@ljhooker.com.au)

### LJ Hooker Aspley | Chermside (07) 3263 6022

1359 Gympie Road, ASPLEY QLD 4034

[aspley.ljhooker.com.au](mailto:aspley.ljhooker.com.au) | [aspley@ljhooker.com.au](mailto:aspley@ljhooker.com.au)



**Disclaimer:** All information contained therein is gathered from relevant third parties sources.  
We cannot guarantee or give any warranty about the information provided. Interested parties must rely solely on their own enquiries.

**LJ Hooker Aspley | Chermside**  
**(07) 3263 6022**