

## Aspley, 25 Coolah Street

Lifestyle & Location Combined —A Stunning Home with Room for Everyone!

This spacious and welcoming family home is perfectly positioned in the heart of Aspley, offering the ideal balance of comfort, flexibility and convenience. With Westfield Chermside, Marchant Park, schools and transport all within walking distance, you'll enjoy an easy lifestyle with everything right at your doorstep.

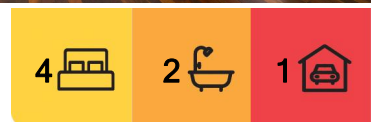
Inside, you'll find multiple living zones, polished timber floors, and a large entertainer's deck overlooking a leafy, fully fenced backyard. Whether it's relaxing on the deck, hosting weekend BBQs, or giving the kids space to play, this home is designed with family living in mind.

Features you'll love:

- Four spacious bedrooms plus a separate study —perfect for working from home
- Two bathrooms for added convenience



**Disclaimer:** All information contained therein is gathered from relevant third parties sources. We cannot guarantee or give any warranty about the information provided. Interested parties must rely solely on their own enquiries.



**For Lease**  
Please Call

**View**  
[ljhooker.com.au/3ATAF1R](http://ljhooker.com.au/3ATAF1R)

**Contact**  
**Lauren Noble**  
[pmbrisbane@ljhooker.com.au](mailto:pmbrisbane@ljhooker.com.au)

**LJ Hooker Aspley | Chermside**  
**(07) 3263 6022**

- Open-plan kitchen/living with island bench, new built-in oven, gas cooking and dishwasher
- Dual living potential downstairs —ideal for teenagers, guests or extended family
- Large covered deck for entertaining or quiet evenings outdoors
- Airconditioning and ceiling fans throughout
- Lock-up garage plus carport with extra storage space
- Fully fenced yard —safe and family-friendly
- Polished timber floors for easy, low-maintenance living

Location highlights:

- Walk to Westfield Chermside, Marchant Park, schools and public transport
- Close to Zillmere State School and Aspley State High
- Easy access to major arterial roads and the Brisbane CBD
- Just minutes to Aspley Hypermarket and a wide range of cafes, restaurants and takeaways
- Short drive to Prince Charles and St Vincent's Hospitals
- Surrounded by leafy parks, bikeways and family-friendly recreation spots
- Close to public transport hubs for quick access across Brisbane
- Well-positioned near local childcare centres and sporting clubs

Would you like to view this property?

Go directly to <https://aspley.ljhooker.com.au> to register to inspect.

PLEASE NOTE, if you do not register online, we cannot notify you of any time changes or cancellations to inspections.

To apply please submit an online application via 2Apply at the following website - <https://www.2apply.com.au/login>

Alternatively, you can download and print our application by visiting our website - <https://aspley.ljhooker.com.au/renting/tenancy-application-form>

All information contained herein is gathered from sources we consider to be reliable. However, we cannot guarantee or give any warranty about the information provided. Interested parties must solely rely on their own enquiries.



**LJ Hooker Aspley | Chermside**  
**(07) 3263 6022**

**Disclaimer:** All information contained therein is gathered from relevant third parties sources. We cannot guarantee or give any warranty about the information provided. Interested parties must rely solely on their own enquiries.

## More About this Property

<b>Property ID</b>	3ATAF1R
<b>Property Type</b>	House
<b>Land Area</b>	597 sqm
<b>Including</b>	Air Conditioning Balcony Dishwasher Outdoor Entertaining Floorboards Fully Fenced Grey Water System

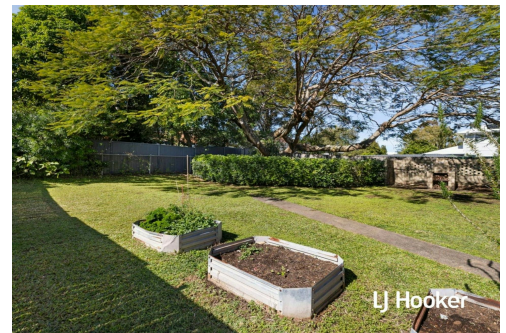
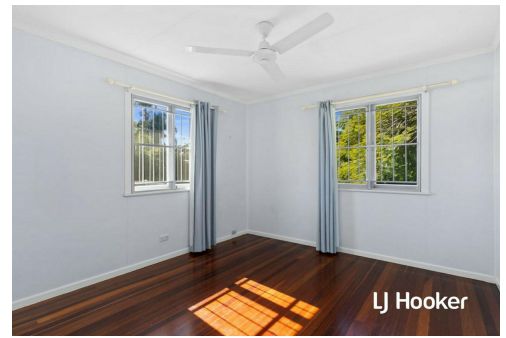
### Lauren Noble

Business Development Manager | [pbrisbane@ljhooker.com.au](mailto:pbrisbane@ljhooker.com.au)

### LJ Hooker Aspley | Chermside (07) 3263 6022

1359 Gympie Road, ASPLEY QLD 4034

[aspley.ljhooker.com.au](http://aspley.ljhooker.com.au) | [aspley@ljhooker.com.au](mailto:aspley@ljhooker.com.au)



**LJ Hooker Aspley | Chermside**  
**(07) 3263 6022**

**Disclaimer:** All information contained therein is gathered from relevant third parties sources. We cannot guarantee or give any warranty about the information provided. Interested parties must rely solely on their own enquiries.



Internal : 198 sqm  
 External : 72 sqm  
 Total Area : 270 sqm



**LJ Hooker Aspley | Chermide**  
**(07) 3263 6022**

**Disclaimer:** All information contained therein is gathered from relevant third parties sources. We cannot guarantee or give any warranty about the information provided. Interested parties must rely solely on their own enquiries.