






23 Tomago Street, Aspley

## BRILLIANTLY POSITIONED WITHIN ASPLEY

The practical floorplan includes 3 sizeable bedrooms all air conditioned, a spacious living/dining air-conditioned, a well-appointed kitchen and neat and tidy family bathroom. One of the home's standout features is it's large, covered deck that extends out seamlessly from the living/dining and overlooks the wonderful backyard with added entertainment beneath. There is a huge utility room and laundry downstairs which families crave.

Features include;

- A wonderful family friendly home on a large block with side access and plenty of safe play space for pets and children
- Spacious Air conditioned living/dining area which adjoins the kitchen and extends out to the covered deck
- Well-appointed kitchen with an abundance of bench space and storage, electric cook top, oven and dishwasher
- The entertaining deck will accommodate a large outdoor table and lounge, and offers some wonderful leafy suburban views and an outlook over the sizeable backyard
- The secure open plan utility area downstairs provides great storage an additional living
- A double (remote doors) high clearance carport will accommodate

3  1  2 

### FOR RENT

Please Call

### AGENTS

Bella Garside  
office.aspley@ljhooker.com.au

### AGENCY

LJ Hooker Aspley | Chermside  
(07) 3263 6022

All information contained therein is gathered from relevant third parties sources.  
We cannot guarantee or give any warranty about the information provided.  
Interested parties must rely solely on their own enquiries.



most vehicles and there is easy side access for boats, caravans and trailers to the backyard

- Three Spacious bedrooms, Two with built in robes and all with new air conditioning

This popular pocket of Aspley is elevated and positioned just 11km from the Brisbane CBD. The leafy walkways and fields of Marchant Park are located at the end of the road and Westfield Chermshire Shopping Centre and Prince Charles/ St Vincent's Hospitals are located within a short 5-minute drive. The Westfield Chermshire Shopping Centre now provides arguably the best shopping, cinema and restaurant precinct in Brisbane. Being a family friendly location, there are a variety of excellent private and public schools within a short proximity of the home and reliable bus transport is within short walking distance.

Would you like to view this property?

Go directly to <https://aspley.ljhooker.com.au> to register to inspect.

PLEASE NOTE, if you do not register online, we cannot notify you of any time changes or cancellations to inspections.

To apply please submit an online application via 2Apply at the following website - <https://www.2apply.com.au/login>

Alternatively, you can download and print our application by visiting our website - <https://aspley.ljhooker.com.au/renting/tenancy-application-form>

All information contained herein is gathered from sources we consider to be reliable. However, we cannot guarantee or give any warranty about the information provided. Interested parties must solely rely on their own enquiries.

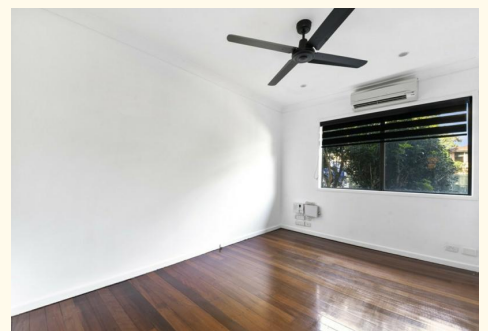
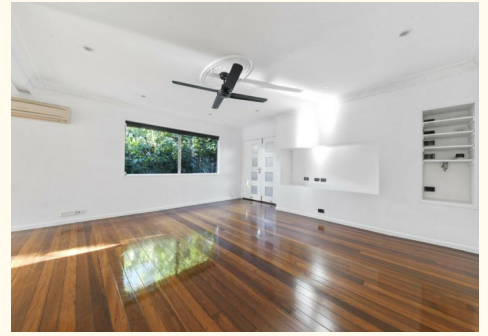
## MORE DETAILS

Property ID	353GF1R
Property Type	House
Including	Air Conditioning Balcony Deck Floorboards Workshop Built-in-Robes Secure Parking Fully Fenced Remote Garage

### Bella Garside

Receptionist | [office.aspley@ljhooker.com.au](mailto:office.aspley@ljhooker.com.au)

**LJ Hooker Aspley | Chermshire (07) 3263 6022**  
1359 Gympie Road, ASPLEY QLD 4034  
[aspley.ljhooker.com.au](http://aspley.ljhooker.com.au) | [aspley@ljhooker.com.au](mailto:aspley@ljhooker.com.au)





Whilst every attempt has been made to ensure accuracy, Floor Plans are representative and should be used as a guide only **LJ Hooker**