

Aspley, 16 Cara Street

Spacious Three Bedroom Home with Potential for Dual Living

Welcome to 16 Cara Street, Aspley, a versatile, solid three bedroom brick high-set home offering exceptional dual living potential in one of Brisbane's most convenient and family-friendly suburbs. Thoughtfully designed for comfort and functionality, this property provides a flexible layout across two levels.

Upstairs, you'll find three good-sized bedrooms, a centrally located bathroom, and a bright, open-plan living and dining area that flows into a charming sunroom —perfect for relaxing with a book or enjoying a morning coffee. Gorgeous timber floorboards run throughout the upper level, adding warmth and character, while the air-conditioned master bedroom ensures comfort year-round.

Downstairs, a spacious rumpus room with its own kitchenette (no appliances) and separate bathroom offers excellent potential for a teenage retreat or multi-generational living setup.



Disclaimer: All information contained therein is gathered from relevant third parties sources. We cannot guarantee or give any warranty about the information provided. Interested parties must rely solely on their own enquiries.

3 

2 

2 

For Lease

\$680 per week

View

By Appointment

Contact

Bella Garside

office.aspley@ljhooker.com.au

LJ Hooker Aspley | Chermide
(07) 3263 6022

Property Features:

- 3 generous bedrooms upstairs with built-in wardrobes
- Master bedroom with air conditioning for year-round comfort
- Polished timber floors throughout the upper level
- Light-filled lounge flowing into a charming sunroom —ideal for a study, kids' play space or morning coffee retreat
- Family bathroom upstairs plus a second bathroom downstairs
- Downstairs rumpus room with a kitchenette (no appliances) —perfect for guests, teenagers, or extended family
- Secure double garage with internal access
- Large backyard offering ample room for kids, pets, or future landscaping

Positioned in a quiet, family-friendly street, this home enjoys superb access to local amenities:

- close proximity to Aspley East State School
- close proximity to Aspley State High School
- 5 min drive to Aspley Hypermarket with Coles, Woolworths, Aldi and specialty stores
- 5 min to Aspley Homemaker City
- 5 mins to Westfield Chermshire —Brisbane's premier shopping destination

Close to major bus routes and easy access to Gympie Road and Brisbane CBD

Would you like to view this property?

Go directly to www.aspley.ljhooker.com.au to register to inspect.

PLEASE NOTE: If you do not register online, we cannot notify you of any time changes or cancellations to inspections.

Ready to Apply?

Please submit an online application via 2Apply at: <https://www.2apply.com.au/login>

Alternatively, you can download and print our application form by visiting:

<http://aspley.ljhooker.com.au/renting/tenancy-application-form>

All information contained herein is gathered from sources we consider to be reliable. However, we cannot guarantee or give any warranty about the information provided. Interested parties must solely rely on their own enquiries.



LJ Hooker Aspley | Chermshire
(07) 3263 6022

Disclaimer: All information contained therein is gathered from relevant third parties sources. We cannot guarantee or give any warranty about the information provided. Interested parties must rely solely on their own enquiries.

More About this Property

| | |
|---------------|---|
| Property ID | 3ATJF1R |
| Property Type | House |
| Land Area | 4680 sqm |
| Including | Air Conditioning Floorboards Built-in-Robes Secure Parking |

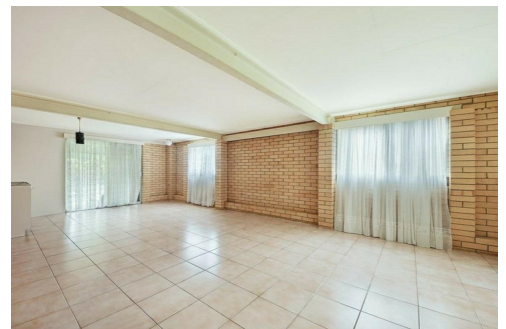
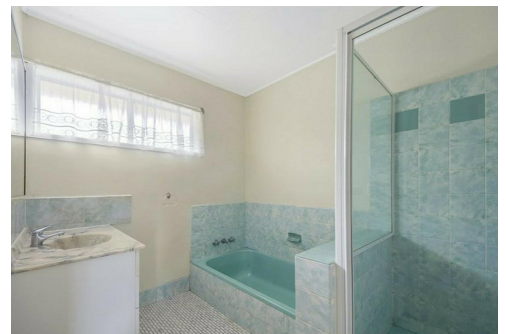
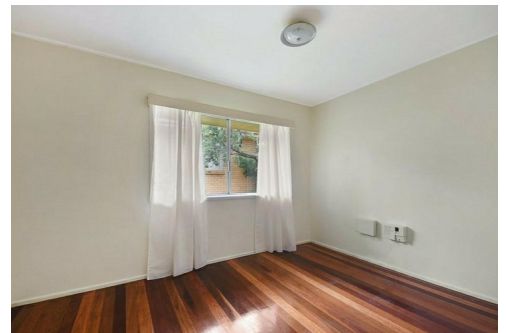
Bella Garside

Receptionist | office.aspley@ljhooker.com.au

LJ Hooker Aspley | Chermside (07) 3263 6022

1359 Gympie Road, ASPLEY QLD 4034

aspley.ljhooker.com.au | aspley@ljhooker.com.au



Disclaimer: All information contained therein is gathered from relevant third parties sources. We cannot guarantee or give any warranty about the information provided. Interested parties must rely solely on their own enquiries.

**LJ Hooker Aspley | Chermside
(07) 3263 6022**