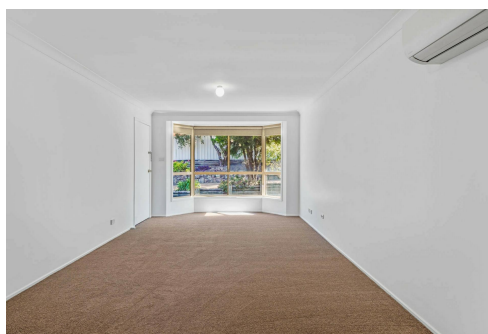


Application Pending

LEASED



Ashtonfield, 1/12 Proserpine Close

"Well-Presented Unit with Yard"

- * 2 good size bedrooms, both with built-in robes
- * Open plan lounge/dining area with air-conditioning
- * Well-appointed kitchen with electric cooking
- * Good size bathroom with separate shower, bath and toilet
- * Good size fully fenced yard with garden shed for extra storage
- * Single garage with external access
- * Located in a quiet cul-de-sac
- * Short drive to Greenhills Shopping Centre, Schools, TAFE, Maitland Private Hospital, New Maitland Hospital and easy access to the New England Highway
- * Photos not to be relied upon



For Lease
Please Call

View
ljhooker.com.au/1E35F6H

Contact
Kevin Yarrington
0432 633 257
kyarrington.maitland@ljhooker.com.au

Disclaimer: The photos indicating the condition of the advertised property may or may not be an exact reflection of the current condition of the property. If you have any concerns please contact the office to confirm this prior to any inspection.



LJ Hooker Maitland
(02) 4933 5511

Disclaimer: All information contained therein is gathered from relevant third parties sources. We cannot guarantee or give any warranty about the information provided. Interested parties must rely solely on their own enquiries.

All information contained herein is gathered from sources we deem to be reliable. However, we cannot guarantee its accuracy and interested persons should rely on their own enquiries.

More About this Property

Property ID	1E35F6H
Property Type	Unit
Including	Air Conditioning Built-in-Robes Carpeted Close to Schools Close to Shops Close to Transport

Kevin Yarrington 0432 633 257
Property Investment Manager | kyarrington@ljhooker.com.au

LJ Hooker Maitland (02) 4933 5511
24 Ken Tubman Drive, MAITLAND NSW 2320
maitland.ljhooker.com.au | maitland@ljhooker.com.au



LJ Hooker Maitland
(02) 4933 5511

Disclaimer: All information contained therein is gathered from relevant third parties sources. We cannot guarantee or give any warranty about the information provided. Interested parties must rely solely on their own enquiries.