

Ashmore, 6 Banyan Court

LARGE FAMILY HOME WITH POOL IN PRIME, HIGHLY- SOUGHT AFTER QUIET CUL-DE-SAC LOCATION!

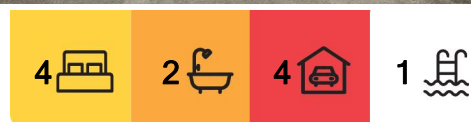
HIGH ON THE HILL, ONLY MINUTES TO EVERYTHING YOU COULD POSSIBLY WANT OR NEED ... This unfurnished family home boasts a highly desirable North aspect and is a real surprise package being very private & unassuming from the street ... set in a highly desirable, central and highly-sought after location.

Property features:-

- * Central & convenient location in the highly-sought "Bellevue Park" precinct of inner-Gold Coast Ashmore
- * Highly desirable North aspect on a large 878m2 allotment
- * Quiet cul-de-sac ... elevated position to capture fantastic breezes
- * Inviting pool with large yard-space and entertaining terraces to enjoy
- * Clever split-level design offering separate living spaces for all the family



Disclaimer: All information contained therein is gathered from relevant third parties sources. We cannot guarantee or give any warranty about the information provided. Interested parties must rely solely on their own enquiries.



For Lease
\$1,50 per week

View
By Appointment

Contact
Kristy Swatosch
admin.ashmore@ljhooker.com.au

LJ Hooker Ashmore
(07) 5526 9722

- * The huge modern kitchen is the centre-piece of the home and offers an abundance of storage & bench-space for all your needs ... large dining area adjacent which opens to outdoor terraces
- * Over-sized rumpus/media room
- * Inviting lounge area overlooks the yard & pool
- * Venture upstairs via the feature timber stair-case to a large living area/parents retreat with balcony to the front and views to Surfers Paradise ... cool Summer breezes flow easily through this space
- * Spacious master bedroom (with balcony to the front) offers walk-in robe & large ensuite ... an enclosed sun-room sits on the other side of the bedroom
- * Two additional large bedrooms on ground level
- * Large 2nd/family bathroom with separate toilet
- * Spacious office, or an extra bedroom if required
- * Spacious laundry opens to yard and clothes-line area ... a generous external storage room is a bonus feature also
- * Double car accommodation plus additional off-street parking
- * An easy stroll to "Sun Valley Park", Ashmore's secret 50+ acre prized haven of tranquil parkland including walking/cycling tracks, swings & slides, cricket nets and training/exercise equipment for all the family, plus a lead-free environment for our lovable canine friends to enjoy also

WANT TO INSPECT?

1. Click on the "BOOK AN INSPECTION" button
2. Register to join an existing inspection by clicking on the Day and Time to see available appointment times
3. If no time offered, please register so we can contact you once time is arranged
4. If you do not register, we cannot notify you of any time changes, cancellations or further inspection times.

Disclaimer: We have in preparing this information used our best endeavours to ensure that the information contained herein is true and accurate. Prospective tenants should make their own enquiries to satisfy themselves as to its accuracy. Although high standards have been used in the preparation of this document, no legal responsibility can be accepted by LJ Hooker Ashmore or any loss or damage resulting from the content or the use of this information. Any photographs show only certain parts of the property as it appeared at the time they were taken. Areas, amounts, measurements, distances and all other numerical information is approximate only.



LJ Hooker Ashmore
(07) 5526 9722

Disclaimer: All information contained therein is gathered from relevant third parties sources. We cannot guarantee or give any warranty about the information provided. Interested parties must rely solely on their own enquiries.

More About this Property

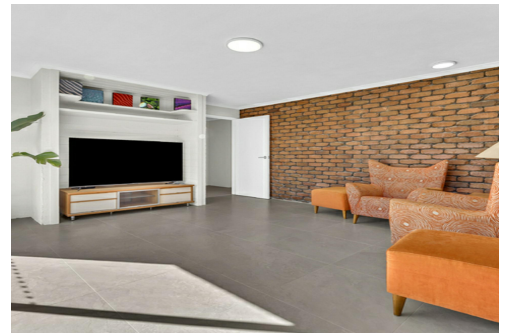
Property ID	PBJ0F
Property Type	House
Land Area	878 sqm
Including	Ensuite Study Air Conditioning Toilets (3) Pool Courtyard Balcony Dishwasher Outdoor Entertaining Built-in-Robes City Views Close to Schools Close to Shops Close to Transport Pay TV Access Pool

Kristy Swatosch

Contracts Administrator & Property Management |
admin.ashmore@ljhooker.com.au

LJ Hooker Ashmore (07) 5526 9722

167 Cotlew Street, ASHMORE QLD 4214
ashmore.ljhooker.com.au | admin.ashmore@ljhooker.com.au



Disclaimer: All information contained therein is gathered from relevant third parties sources.
We cannot guarantee or give any warranty about the information provided. Interested parties must rely solely on their own enquiries.

LJ Hooker Ashmore
(07) 5526 9722



6 BANYAN COURT, ASHMORE

Bed 4
 Bath 2
 Car 2

LJ Hooker
 Ashmore

Measurements are approximate only and no responsibility is taken for any error, omission, or mis-statement. This is for illustrative purposes only and should be used as such by any prospective purchaser. www.visualmotion.com.au

LJ Hooker

LJ Hooker Ashmore
 (07) 5526 9722

Disclaimer: All information contained therein is gathered from relevant third parties sources.
 We cannot guarantee or give any warranty about the information provided. Interested parties must rely solely on their own enquiries.