



Ashmore, 32 Binalong Drive

Stunning Skyline Views!

Move In Ready! Look no further!

This exceptional residence features four spacious bedrooms, two bathrooms, multiple, separated living areas and more.

The top floor features a master suite with a generously sized ensuite, spacious living area and private balcony making it the perfect retreat to take in the views.

The Ideal property for those who love to entertain, this home is designed for BBQ's by the resort style pool or cozy evenings by the enchanting fireplace.

Architectural elements that embrace the captivating Gold Coast vistas, coupled with the landscaped gardens and fully fenced grounds offer a perfect setting for children to play.

4	2	6	1
---	---	---	---

For Lease
Please Call

View
ljhooker.com.au/H0J0F

Contact
Kristy Swatosch
admin.ashmore@ljhooker.com.au



LJ Hooker Ashmore
(07) 5526 9722

Disclaimer: All information contained therein is gathered from relevant third parties sources. We cannot guarantee or give any warranty about the information provided. Interested parties must rely solely on their own enquiries.

Enjoy the convenience of a large double lock-up garage with abundant storage space. The property also presents potential for a separate studio or games room, enhancing the already impressive versatility of this home.

There is also plenty of additional space available to store a boat or jet ski if needed.

Features:

- * Top floor - master bedroom retreat with ensuite featuring a separate and spacious living area, large balcony with expansive Gold Coast and hinterland views.
- * Multiple entertaining and living areas.
- * Sparkling pool with creepy crawly for those hot days and entertaining family and friends.
- * Three separate grassed areas for children and pets to play.
- * Fully fenced yard located at the front and back of the home
- * Architectural design features with a homely feel.
- * Close to beaches, shops, schools and parks.
- * Quiet, cul-de-sac location.
- * Double lock up garage with plenty of storage.
- * Driveway with space for up to 4 cars and plenty of on-street parking

Don't miss out on this fantastic opportunity to make this your new home!

Contact the Property Management Team on 0435 776 625 to arrange an inspection at a time that suits you!

Disclaimer: We have in preparing this information used our best endeavours to ensure that the information contained herein is true and accurate. Prospective tenants should make their own enquiries to satisfy themselves as to its accuracy. Although high standards have been used in the preparation of this document, no legal responsibility can be accepted by LJ Hooker Ashmore or any loss or damage resulting from the content or the use of this information. Any photographs show only certain parts of the property as it appeared at the time they were taken. Areas, amounts, measurements, distances and all other numerical information is approximate only.



LJ Hooker Ashmore
(07) 5526 9722

Disclaimer: All information contained therein is gathered from relevant third parties sources. We cannot guarantee or give any warranty about the information provided. Interested parties must rely solely on their own enquiries.

More About this Property

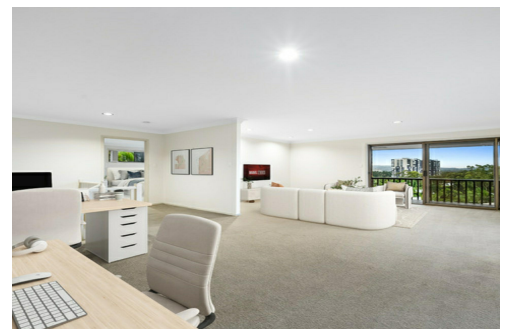
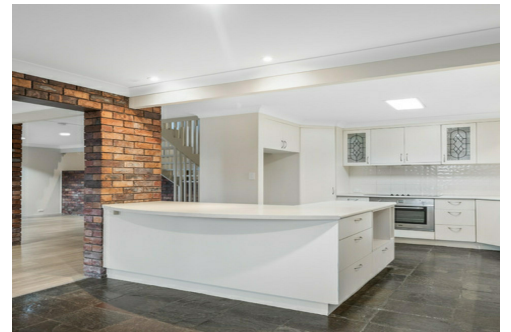
Property ID	H0J0F
Property Type	House
Land Area	729 sqm
Including	Ensuite Air Conditioning Toilets (2) Intercom Pool Balcony Dishwasher Outdoor Entertaining Built-in-Robes Fully Fenced Remote Garage Carpeted City Views Close to Schools Close to Shops Close to Transport Liveability Pool

Kristy Swatosch

Contracts Administrator & Property Management |
admin.ashmore@ljhooker.com.au

LJ Hooker Ashmore (07) 5526 9722

167 Cotlew Street, ASHMORE QLD 4214
ashmore.ljhooker.com.au | admin.ashmore@ljhooker.com.au



Disclaimer: All information contained therein is gathered from relevant third parties sources.
We cannot guarantee or give any warranty about the information provided. Interested parties must rely solely on their own enquiries.

LJ Hooker Ashmore
(07) 5526 9722

32 Binalong Drive
Ashmore

Internal - 248m²
External - 56m²
Total - 304m²



729m²



LJ Hooker
Ashmore

Disclaimer

This floor plan is intended for illustrative purposes only and may not accurately reflect the exact layout or dimensions of the property. All measurements and details should be independently verified. We take no responsibility for any discrepancies or errors in the information provided.