

## Ashmore, 169 Benowa Road

### Spacious Family Home With Large Front And Rear Yard

Perfectly positioned in a sought-after, central location just a 10-minute drive to Surfers Paradise and the world-famous beaches of the Gold Coast, this charming freestanding home offers space, convenience, and endless potential.

Set on a generous 643m<sup>2</sup> parcel of land, this property boasts expansive front and rear yards —ideal for kids to play and entertaining. Inside, the home features an open plan living and dining area that flows seamlessly, capturing natural light and offering skyline glimpses.

#### Property Features:

- \* Three well-proportioned bedrooms
- \* One central bathroom
- \* Single lock-up garage with internal access



**Disclaimer:** All information contained therein is gathered from relevant third parties sources. We cannot guarantee or give any warranty about the information provided. Interested parties must rely solely on their own enquiries.



**For Lease**  
\$865 per week

**View**  
By Appointment

**Contact**  
**Kristy Swatosch**  
admin.ashmore@ljhooker.com.au

**LJ Hooker Ashmore**  
**(07) 5526 9722**

- \* Room for at least 2 additional vehicles on the driveway
- \* Ample on-street parking
- \* Open plan living and dining area
- \* Spacious front and rear yard
- \* Prime, family-friendly location close to shops, schools, parks, and public transport
- \* Only 10 minutes to Surfers Paradise and iconic Gold Coast beaches

Available now! Move in and enjoy the lifestyle! Enquire today!

#### WANT TO INSPECT?

1. Click on the "BOOK AN INSPECTION" button
2. Register to join an existing inspection by clicking on the Day and Time to see available appointment times
3. If no time offered, please register so we can contact you once time is arranged
4. If you do not register, we cannot notify you of any time changes, cancellations or further inspection times.

Disclaimer: We have in preparing this information used our best endeavours to ensure that the information contained herein is true and accurate. Prospective tenants should make their own enquiries to satisfy themselves as to its accuracy. Although high standards have been used in the preparation of this document, no legal responsibility can be accepted by LJ Hooker Ashmore or any loss or damage resulting from the content or the use of this information. Any photographs show only certain parts of the property as it appeared at the time they were taken. Areas, amounts, measurements, distances and all other numerical information is approximate only.

## More About this Property

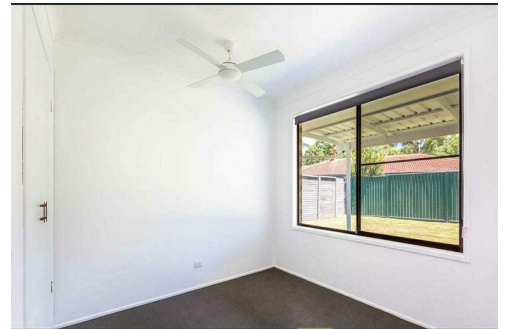
<b>Property ID</b>	PHJ0F
<b>Property Type</b>	House
<b>Land Area</b>	643 sqm
<b>Including</b>	Air Conditioning Toilets (1) Dishwasher Carpeted Close to Schools Close to Shops Close to Transport Toilet Facilities

#### Kristy Swatosch

Contracts Administrator & Property Management |  
admin.ashmore@ljhooker.com.au

#### LJ Hooker Ashmore (07) 5526 9722

167 Cotlew Street, ASHMORE QLD 4214  
ashmore.ljhooker.com.au | admin.ashmore@ljhooker.com.au



**LJ Hooker Ashmore**  
**(07) 5526 9722**

**Disclaimer:** All information contained therein is gathered from relevant third parties sources. We cannot guarantee or give any warranty about the information provided. Interested parties must rely solely on their own enquiries.