



47 Milton Street, Ashfield

2 1 0

## Charming 2 Bedroom Semi in the Heart of Ashfield

Positioned in the heart of Ashfield, this beautifully presented period semi blends classic character with modern comfort, offering a welcoming home ideal for relaxed Inner West living. The single level layout flows from the traditional front rooms through to a light filled open living and dining area, seamlessly connecting to a sun drenched north west facing backyard perfect for entertaining or unwinding.

Enjoy the convenience of a prime location just moments to Ashfield Mall, train station, local cafes, parks and schools. With direct access to Lion Street Reserve and playground, this home delivers an exceptional lifestyle opportunity combining space, comfort and everyday convenience.

### Property Features:

- 2 bedrooms with new carpet, main with built in wardrobe
- Open living and dining area with fireplace
- Updated stone kitchen with gas cooking and stainless steel appliances
- Modern bathroom with large shower
- Timber flooring throughout living areas
- High ceilings and freshly painted interiors

### FOR RENT

Please Call

### AGENTS

Alexandra McPartland  
0449 022 720  
alex@ljha.com.au

### AGENCY

LJ Hooker Ashfield  
(02) 9797 6044

All information contained therein is gathered from relevant third parties sources. We cannot guarantee or give any warranty about the information provided. Interested parties must rely solely on their own enquiries.

LJ Hooker

- Sun filled rear yard with alfresco area
- Direct access to Lion Street Reserve and playground

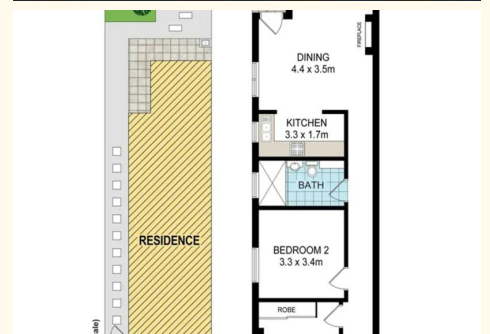
**DISCLAIMER:** This advertisement contains information provided by third parties. While all care is taken to ensure otherwise, LJ Hooker Ashfield does not make any representation as to the accuracy of the information contained in the advertisement, does not accept responsibility or liability, and recommends that any client make their own investigations and inquiries. All images are indicative of the property only.

### MORE DETAILS

Property ID                    1AHWF8B  
 Property Type                House

**Alexandra McPartland 0449 022 720**  
 Property Investment Co-ordinator | alex@ljha.com.au

**LJ Hooker Ashfield (02) 9797 6044**  
 216 Liverpool Road, ASHFIELD NSW 2131  
 ashfield.ljhooker.com.au | ashfield@ljha.com.au



All information contained therein is gathered from relevant third parties sources. We cannot guarantee or give any warranty about the information provided. Interested parties must rely solely on their own enquiries.

