



**LJ Hooker**  
Ashfield | Inner West

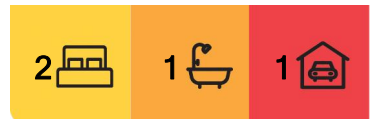


## Ashfield, 4/28 Orpington Street

Updated, Stylish & Bright!

Light-filled 2 Bedroom Apartment, nestled in the cosy sought after location of Ashfield. This apartment offers an unrivaled lifestyle of convenience. Its walk-everywhere location sees you only moments from Ashfield train station, a selection of elite schools, Ashfield Park and some trendy restaurants and cafes. This property features;

- Built in wardrobes in both bedrooms
- Combined living/dining room boasting with natural light.
- Convenience of a carspace. Its walk-everywhere location sees you only moments from Ashfield train station, a selection of elite schools, Ashfield Park and some trendy restaurants and cafes. with the interior being freshly updated, the property is ready for you to call it home.



**For Lease**  
Please Call

**View**  
[ljhooker.com.au/176UF8B](http://ljhooker.com.au/176UF8B)

**Contact**  
**Santino Giunta**  
0415840444  
[santino@ljha.com.au](mailto:santino@ljha.com.au)

**LJ Hooker**

**Disclaimer:** All information contained therein is gathered from relevant third parties sources. We cannot guarantee or give any warranty about the information provided. Interested parties must rely solely on their own enquiries.

**LJ Hooker Ashfield**  
**(02) 9797 6044**

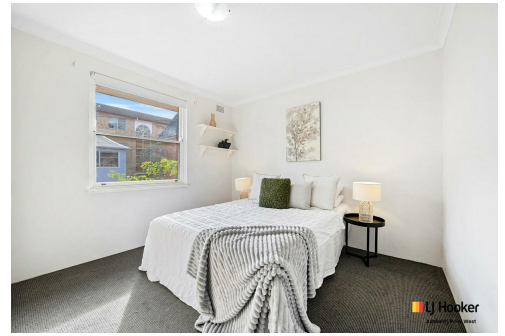
DISCLAIMER: This advertisement contains information provided by third parties. While all care is taken to ensure otherwise, LJ Hooker Ashfield does not make any representation as to the accuracy of the information and photographs contained in the advertisement, does not accept and responsibility or liability and recommends that any client make their own investigations and enquiries. All images are indicative of the property only. Images are representative and depict lifestyle concepts only and may have been digitally altered. The information contained in this website will not form any part of any agreement.

## More About this Property

<b>Property ID</b>	176UF8B
<b>Property Type</b>	Apartment
<b>Including</b>	Built-in-Robes Secure Parking

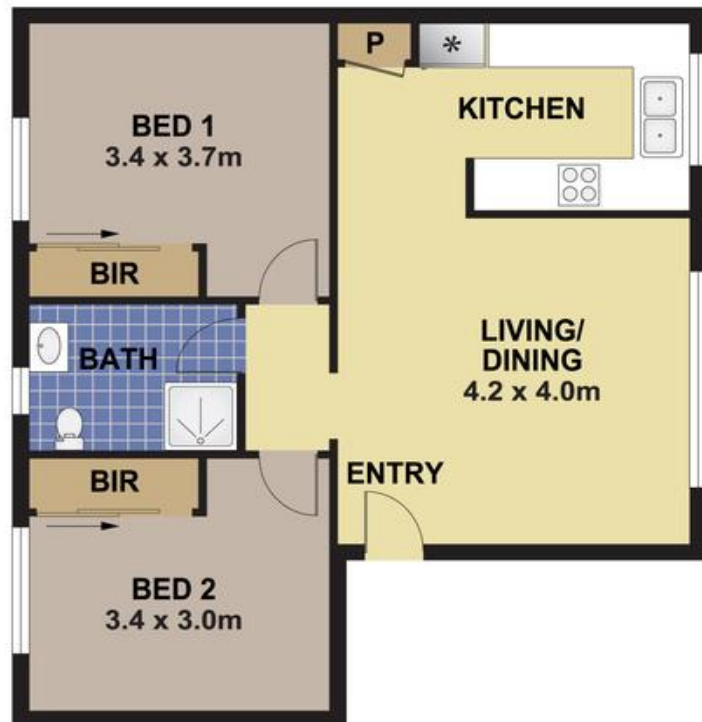
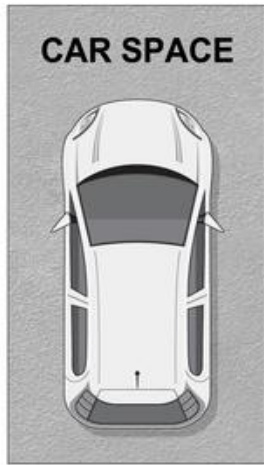
**Santino Giunta 0415840444**  
Property Investment Co-Ordinator | [santino@ljha.com.au](mailto:santino@ljha.com.au)

**LJ Hooker Ashfield (02) 9797 6044**  
216 Liverpool Road, ASHFIELD NSW 2131  
[ashfield.ljhooker.com.au](http://ashfield.ljhooker.com.au) | [ashfield@ljha.com.au](mailto:ashfield@ljha.com.au)



**Disclaimer:** All information contained therein is gathered from relevant third parties sources. We cannot guarantee or give any warranty about the information provided. Interested parties must rely solely on their own enquiries.

**LJ Hooker Ashfield**  
**(02) 9797 6044**



## 4/28 ORPINGTON STREET, ASHFIELD

### DISCLAIMER

PLANS SHOWN ARE FOR MARKETING PURPOSES ONLY, ALL DIMENSIONS ARE APPROXIMATE AND NOT TO SCALE. THEY ARE SUBJECT TO ERRORS AND INACCURACIES AND NO LIABILITY WILL BE ACCEPTED. INTERESTED PARTIES SHOULD MAKE THEIR OWN ENQUIRIES.



LJ Hooker Ashfield  
(02) 9797 6044

**Disclaimer:** All information contained therein is gathered from relevant third parties sources. We cannot guarantee or give any warranty about the information provided. Interested parties must rely solely on their own enquiries.