






B308/165 Milton Street, Ashbury

2  2  1 

Brand New Designer Apartment Featuring Media/Study and Resort-Style Amenities

FOR RENT

Please Call

AGENTS

Eliza Francisco

0435 292 710

eliza@ljhburwood.com.au

AGENCY

LJ Hooker Burwood

(02) 9745 3999

Property Features:

- Brand new, never before occupied residence
- Secure building with video intercom access
- Spacious open plan living and dining area filled with natural light
- Large covered balcony with pool outlook, equipped with lighting, gas and power connections – ideal for entertaining
- Designer kitchen with stone benchtops, gas cooking, premium Fisher & Paykel appliances, dishwasher and abundant soft-close cabinetry
- Two generously sized bedrooms, master with built-in wardrobe and ensuite
- Modern main bathroom and internal internal laundry with washing machine & dryer included

All information contained therein is gathered from relevant third parties sources.

We cannot guarantee or give any warranty about the information provided.

Interested parties must rely solely on their own enquiries.

 **LJ Hooker**

- Dedicated media/study room with its own door and window – perfect for working from home
- Secure basement car space plus separate storage cage
- Access to exclusive resident facilities including a heated swimming pool, state-of-the-art gym and landscaped outdoor dining areas
- Direct access to WH Wagner Oval, moments to schools, transport, shopping precincts, caf´s and restaurants

The Inspections

To book/register for an inspection please click on the Email Agent tab and register your interest. By registering, you will be instantly informed of any available inspection, updates, changes or cancellations for an open home or your appointment.

Disclaimer

This advertisement contains information provided by third parties. While all care is taken to ensure otherwise, LJ Hooker Burwood does not make any representation as to the accuracy of the information contained in the advertisement. LJ Hooker Burwood does not accept any responsibility or liability and recommends that any client make their own investigations and enquiries. All images are indicative of the property only.

MORE DETAILS

Property ID 11XWF8R
Property Type Unit

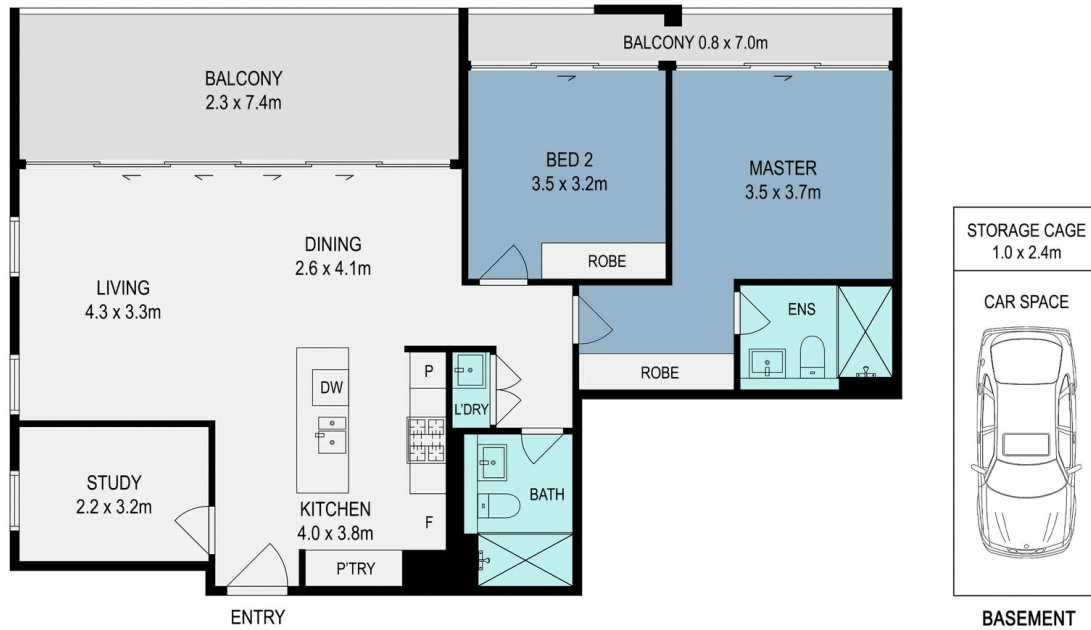
Eliza Francisco 0435 292 710

Property Management Associate | eliza@ljhburwood.com.au

LJ Hooker Burwood (02) 9745 3999

Shop 2/27-29 Burwood Road, BURWOOD NSW 2134
burwood.ljhooker.com.au | burwood@ljhburwood.com.au





308/165B Milton Street, Ashbury



DISCLAIMER: THIS FLOOR PLAN IS INTENDED AS A GUIDE ONLY. IT DOES NOT CONSTITUTE PART OF ANY LEGAL DOCUMENTS. ALL DIMENSIONS ARE APPROXIMATE, ACTUAL MAY VARY. NO LIABILITY ACCEPTED. YOU MUST SEEK ADVICE FROM YOUR SOLICITOR. FLOOR PLAN BY WWW.MCPixelsAU.COM