



Army Bay

Army Bay - 2 Bedroom

Lovely cottage only a short walk to Fishermans Cove beach and with sea views.

Enjoy sitting on the covered in balcony watching the world go by with great indoor/outdoor flow.

2 bedrooms (no wardrobes) with large bathroom & separate toilet.

Extra large garage with laundry and internal access.

Bus stop outside the gate.

Pets may be permitted!

Close proximity to Whangaparaoa golf course, Shakespear Regional Park, Primary schools, Wentworth College and also nearby Gulf Harbour Village's restaurants and shops.

2

1

1

For Lease
Please Call

View
ljhooker.co.nz/1FUHHP

Contact
Marina Freeman
027 485 8085
mfreeman.whangaparaoarentals@ljhooker.co.nz



Disclaimer: All information contained therein is gathered from relevant third parties sources. We cannot guarantee or give any warranty about the information provided. Interested parties must rely solely on their own enquiries.

LJ Hooker Whangaparaoa Rentals
(09) 424 3518
Whangaparaoa Rentals and Property
Management Ltd

More About this Property

Property ID 1FUHHP

Property Type House

Licensed Real Estate Agents (REAA2008)

Marina Freeman 027 485 8085

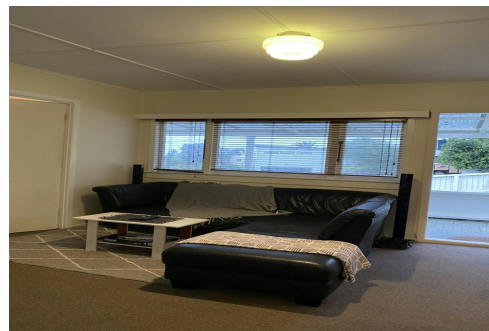
Property Manager | mfreeman.whangaparaoarentals@ljhooker.co.nz

LJ Hooker Whangaparaoa Rentals (09) 424 3518

Whangaparaoa Rentals and Property Management Ltd

Leal Place, WHANGAPARAOA NZ 0930

whangaparaoarentals.ljhooker.co.nz | whangaparaoarentals@ljhooker.co.nz



Disclaimer: All information contained therein is gathered from relevant third parties sources.

We cannot guarantee or give any warranty about the information provided. Interested parties must rely solely on their own enquiries.

**LJ Hooker Whangaparaoa Rentals
(09) 424 3518**

Whangaparaoa Rentals and Property
Management Ltd