

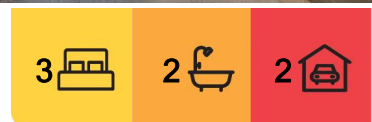
Armadale, 14 Periwinkle Place

Fabulous and Luxurious Tri-Level Townhouse at Toorak Park Available for Lease!

This townhouse is located at a first class location at Armadale. It is close to Toorak Train Station, trams, buses, parks, cafes, shops and schools. This large tri-level townhouse is also located near Malvern Road and High Street. This property also has easy access to the Monash arterial and Dandenong Road.

Key features include a rooftop garden with communal kitchen, dining space to host private gatherings, cinema room, and a health and wellbeing centre with a swimming pool, private gym, spa and steam room.

The ground level features secure parking spaces, European-style laundry + Miele appliances, washing machine and a backyard + study space.



For Lease

Please Call

View

ljhooker.com.au/MJ3HC2



LJ Hooker City Residential
(03) 9600 2166

Disclaimer: All information contained therein is gathered from relevant third parties sources. We cannot guarantee or give any warranty about the information provided. Interested parties must rely solely on their own enquiries.

The first floor is the core of the home, which comprises of a well-appointed stone benchtop, kitchen with stainless steel Miele appliances including built-in fridge and dishwasher, a small toilet and an open plan living and dining area with access to a balcony.

There are also 3 well-sized bedrooms all with built-in-robres, 2 bathrooms and top floor terrace.

Features:

- All 3 bedrooms with BIR's
- 2 sparkling bathrooms, one with a beautiful bathtub and powder room on the second floor
- Dishwasher and Miele appliances + washing machine and dryer
- Garage with 2 car spaces + remote controls + visitor parking space in the complex
- Balcony and yard + rooftop terrace + outside BBQ points
- Security alarm system + remote controls
- On-site building manager + security officer during the night
- Heating/cooling throughout all areas + climate control system
- Green facilities such as recycled water in usage and solar power system

*****Arranging an inspection is easy!*****

To book a time to inspect, simply click on the Book an Inspection Time button OR click Contact Agent, email through your details so we can reply with available appointment times for you to register to inspect. By registering, you will be INSTANTLY informed of any updates, changes or cancellations for your appointment.

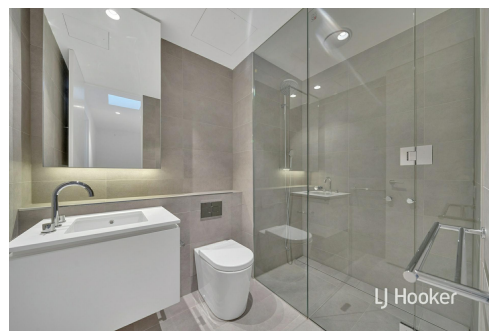
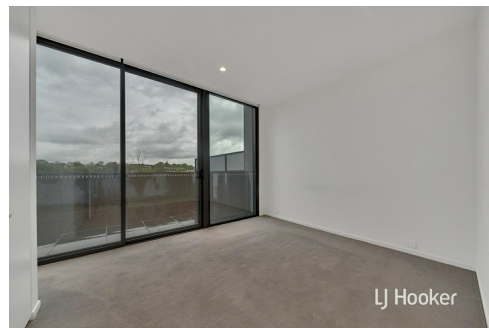
Preferred rental payment method is via SimpleRent: Direct Debit from Bank Account (\$1.10 inclusive of GST. per transaction) or Credit Card (Visa Master Card 1.98% / Amex 4.4% per transaction).

More About this Property

Property ID	MJ3HC2
Property Type	Townhouse

LJ Hooker City Residential (03) 9600 2166

Upper Ground Floor, 439-445 Lonsdale St, MELBOURNE VIC 3000
cityresmelbourne.ljhooker.com.au | cityresmelbourne@ljh.com.au



Disclaimer: All information contained therein is gathered from relevant third parties sources. We cannot guarantee or give any warranty about the information provided. Interested parties must rely solely on their own enquiries.

LJ Hooker City Residential
(03) 9600 2166