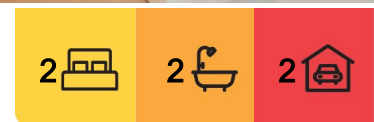




## Armadale, 804/8C Evergreen Mews

Contemporary Style 2-Bedroom Apartment with a Nice View for Lease!



**For Lease**  
Please Call

**View**  
[ljhooker.com.au/NJCHC2](http://ljhooker.com.au/NJCHC2)

\*Fully Furnished Option is Available at Extra Cost

This apartment is located at a first class location. It is close to Monash arterial, Toorak Train Station, buses, High Street trams, Malvern Road and Dandenong Road. Parks, cafes, shops and schools are nearby as well.

Key features include a rooftop garden with communal kitchen, dining space to host private gatherings, cinema room and a health and well-being centre with a swimming pool, private gym, spa and steam room.

Other features include:

- Secure video entrance
- 2 generous bedrooms both with built-in robes and main bedroom with ensuite



**LJ Hooker City Residential**  
**(03) 9600 2166**

**Disclaimer:** All information contained therein is gathered from relevant third parties sources. We cannot guarantee or give any warranty about the information provided. Interested parties must rely solely on their own enquiries.

- Sparkling second central bathroom
- Miele appliances including the dishwasher and oven
- Open plan living and dining with adjacent balcony
- Secure undercover parking with remote access
- Visitor parking provided
- Storage case provided
- Central heating and cooling
- Balcony with nice view
- NBN connections
- One storage

Don't miss out this amazing and high end opportunity within one of Melbourne's most desirable suburbs.

\*\*\*\*\*Arranging an inspection is easy!\*\*\*\*\*

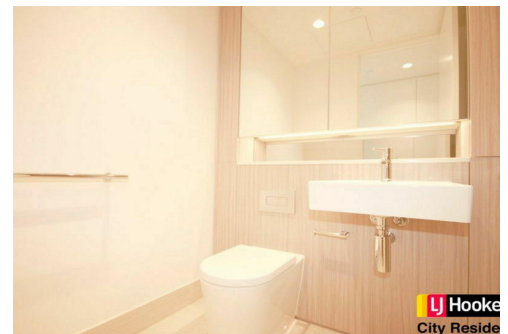
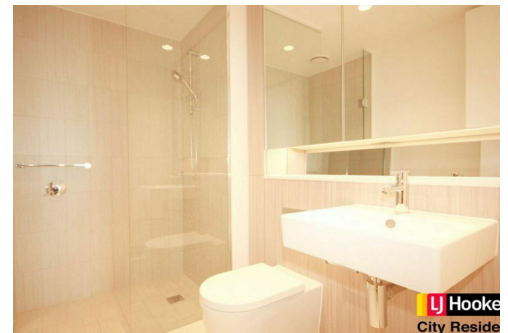
To book a time to inspect, simply click on the Book an Inspection Time button OR click Contact Agent, email through your details so we can reply with available appointment times for you to register to inspect. By registering, you will be INSTANTLY informed of any updates, changes or cancellations for your appointment.

## More About this Property

<b>Property ID</b>	NJCHC2
<b>Property Type</b>	Apartment

### LJ Hooker City Residential (03) 9600 2166

Upper Ground Floor, 439-445 Lonsdale St, MELBOURNE VIC 3000  
[cityresmelbourne.ljhooker.com.au](http://cityresmelbourne.ljhooker.com.au) | [cityresmelbourne@ljhooker.com.au](mailto:cityresmelbourne@ljhooker.com.au)



**Disclaimer:** All information contained therein is gathered from relevant third parties sources. We cannot guarantee or give any warranty about the information provided. Interested parties must rely solely on their own enquiries.

**LJ Hooker City Residential**  
**(03) 9600 2166**