

Angle Vale, 6 Crystal Court

New Executive Family Home



Be the first to live in this brand new home in the sought after Riverview Estate. Perfectly located close to local schools, public transport and local shops.

Features include:

- *Open plan living and dining area opening to Alfresco
- *Well-appointed kitchen with stainless steel appliances, dishwasher and gas cooktop
- *Kitchen features ample benchtops space, island bench and pantry
- *Main bedroom with walk in robe and ensuite
- *3 remaining bedrooms are a good size, all with built in robes
- *Main bathroom features a shower, bath and toilet
- *Internal laundry with built in cupboards
- *Ducted reverse cycle air conditioning
- *Alfresco area for entertaining
- *Double garage with internal access and remote controlled garage door

For Lease
Please Call

View
ljhooker.com.au/2C5EFDZ

Contact
Jackson Dodwell
0434 079 463
jackson.dodwell@ljhadelaidemetro.com.au



LJ Hooker St Peters
(08) 8362 8008

Disclaimer: All information contained therein is gathered from relevant third parties sources. We cannot guarantee or give any warranty about the information provided. Interested parties must rely solely on their own enquiries.

- *Irrigated garden
- *Alarm system
- *Gas hot water

The Location is approximately:

- *2 minute drive to Trinity College Gawler River
- *3 minute drive to Angle Vale Primary School
- *4 minute drive to Angle Vale Shopping Centre
- *16 minute drive to Gawler

This family home is located close to an expanding shopping precinct, Schools and Community Sports Centre in Angle Vale; only a short distance to the main hubs of Gawler, Munno Para and Elizabeth; and just 30 minutes out to the Barossa or into the CBD

Water charges: Water usage and supply charges apply
 Furniture: Unfurnished

NOTE ABOUT THE OPEN INSPECTIONS: Interested persons MUST register their details to attend any of the scheduled viewing dates and times allocated. The agent will not attend the listed viewing date and time if you do not register and confirm your attendance. It is for this reason we highly recommend you register to attend to ensure the agent's attendance and to avoid disappointment.

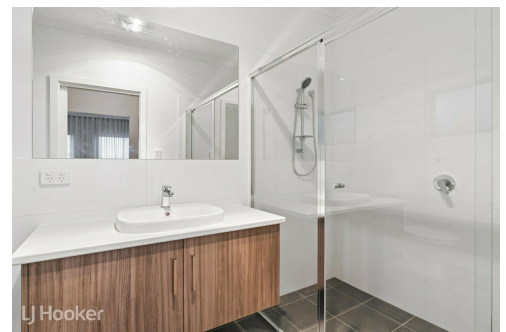
Disclaimer: All information provided has been obtained from sources we believe to be accurate, however, we cannot guarantee the information is accurate and we accept no liability for any errors or omissions. We encourage all interested parties to make their own enquiries, particularly regarding NBN/internet availability at the property.

More About this Property

Property ID	2C5EFDZ
Property Type	House
Including	Ensuite

Jackson Dodwell 0434 079 463
 Residential Property Manager | jackson.dodwell@ljhadelaidemetro.com.au

LJ Hooker St Peters (08) 8362 8008
 2a Portrush Road, PAYNEHAM SA 5070
stpeters@ljhadelaidemetro.com.au | stpeters.ljhooker.com.au



LJ Hooker St Peters
(08) 8362 8008

Disclaimer: All information contained therein is gathered from relevant third parties sources. We cannot guarantee or give any warranty about the information provided. Interested parties must rely solely on their own enquiries.