

5 Peony Road, Angle Vale

Modern Comfort & Quality Living in Angle Vale

TO REGISTER AND INSPECT THIS PROPERTY VISIT:

<https://tenantoptions.com.au/>


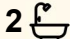
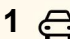
- * Only applicants who have inspected the property will be considered **

Welcome to 5 Peony Road, Angle Vale - a well-appointed home offering modern finishes, practical design, and low-maintenance living in a fast-growing, family-friendly community.

Thoughtfully designed for comfort and functionality, this home features a light-filled interior with quality inclusions throughout. The open-plan living, dining, and kitchen area forms the heart of the home, creating a seamless space for everyday living and entertaining.

Key Property Features:

Spacious master bedroom with walk-in robe and large ensuite
Two additional bedrooms with built-in robes, including mirrored door
Open-plan kitchen, living, and dining area
Modern kitchen featuring island bench, large fridge space and huge corner pantry for ample storage
Quality appliances including gas cooktop, electric oven, rangehood and dishwasher

3  2  1 

FOR RENT

Please Call

AGENTS

Cheree Hunt
0403 707 370
chereeh@ljhpropertymanagement.com.au

Nyree Lane
0486 035 334
nyreel@ljhpropertymanagement.com.au

AGENCY

LJ Hooker Property Specialists
(08) 8289 6660

All information contained therein is gathered from relevant third parties sources.
We cannot guarantee or give any warranty about the information provided.
Interested parties must rely solely on their own enquiries.



Stylish bathrooms with quality finishes
Floorboards throughout all living areas, carpet in bedrooms, and tiled wet areas
Dual blinds for added privacy and light control
Ducted air conditioning for year-round comfort
Solar system to help reduce energy costs
Security doors to both front and rear for added peace of mind
Secure garage with remote roller door and internal access
Step outside to a covered alfresco area under the main roof, perfect for outdoor entertaining, overlooking a low-maintenance lawn backyard - an ideal choice for families, couples, or professionals.
Lifestyle & Location

Set in the thriving suburb of Angle Vale, this home offers a growing community with all the conveniences close by.

Enjoy easy access to Main North Road and the Northern Expressway (M2), providing a smooth commute to Gawler and Munno Para. Local schools, parks, shopping, and cafes are just minutes away, with Angle Vale Primary School and Trinity College nearby. Public transport along Heaslip and Curtis Roads makes getting around simple.

Be quick —opportunities like this don't last long. Register your interest today!

Please contact us during office hours on 8289 6660 (Monday-Friday 9am-5.00pm) if you have any queries regarding the application process. If your queries relate to an open inspection time, please be advised that all open times are updated every Friday by close of business. If you are unable to attend the open inspection or there are no open times scheduled, please send your enquiry through this website.
RLA 208516

MORE DETAILS

Property ID 2D6RGJU
Property Type House

Cheree Hunt 0403 707 370

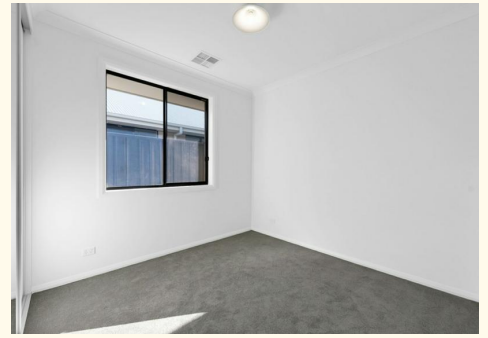
Property Investment Specialist |
chereeh@ljhpropertymanagement.com.au

Nyree Lane 0486 035 334

Investor Specialist | nyreel@ljhpropertymanagement.com.au

LJ Hooker Property Specialists (08) 8289 6660

Shop 2, 1007 North East Road, RIDGEHAVEN SA 5097
propertyspecialists.ljhooker.com.au | info@ljhsupport.com.au





All information contained therein is gathered from relevant third parties sources.
 We cannot guarantee or give any warranty about the information provided.
 Interested parties must rely solely on their own enquiries.