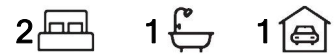




Angle Park, 3/270 Days Road

Spacious 2 bedroom unit



- INSPECTION TIMES- To inspect this property please click the "Request a Time" Or "Book an Inspection" button below. You will be notified of future inspections times and updates. Once registration has been completed you will be sent an email with instructions on how to apply. PRE APPLICANTS WELCOME BUT APPLICATIONS WONT BE PROCESSED UNTIL THE PROPERTY HAS BEEN VIEWED.

Yes, this unit is well below market value and the Landlord would like a tenant to care for it as if it were their own.

Located at the rear of a small group of only 3 units, this comfortable home at 3/270 Days Road, Angle Park is ready for you to move in and enjoy!

Features:

For Lease

\$290 per week

View

By Appointment

Contact

Russell Payne

(08) 8352 1155

russell@ljhfp.com.au



LJ Hooker Flinders Park
(08) 8352 1155

Disclaimer: All information contained therein is gathered from relevant third parties sources. We cannot guarantee or give any warranty about the information provided. Interested parties must rely solely on their own enquiries.

- 2 Bedrooms: Perfect for singles, couples, or small families.
- 1 Bathroom: With combined toilet for convenience.
- Modern Kitchen: Featuring a gas stove and updated cupboards.
- Open Plan Living: Combined dining and lounge area provides a flexible living space.
- Separate Laundry: With your own private clothesline.
- Easy-Care Flooring: Hard-wearing and practical throughout.
- Storage: Linen cupboard in the hallway.
- Carport: Your own designated carport for secure parking.
- Quiet location, yet close to all amenities:

Walking distance to public transport, shops, and parks.
 Easy access to main roads for commuting to the city or other suburbs.

School Catchment Zones:

<https://www.education.sa.gov.au/parents-and-families/enrol-school-or-preschool/find-a-school-zone-or-preschool-catchment-area>

(We take no responsibility for the information given by the school zone locator and you should always make your own inquiries with the school directly)

12 month lease

Water use and supply charges apply to the tenant

Tom Drougas

Property Manager

LJ Hooker Flinders Park

tomd@ljhfp.com.au

RLA 215339

More About this Property

Property ID HTEH67

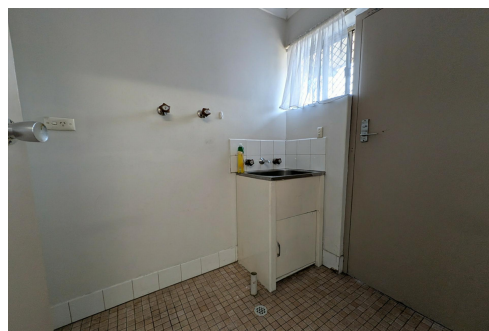
Property Type Unit

Russell Payne (08) 8352 1155

Department Manager - Property Management | russell@ljhfp.com.au

LJ Hooker Flinders Park (08) 8352 1155

Suite 2/166-168 Grange Road, FLINDERS PARK SA 5025
 flinderspark.ljhooker.com.au | flinderspark@ljhfp.com.au



**LJ Hooker Flinders Park
 (08) 8352 1155**

Disclaimer: All information contained therein is gathered from relevant third parties sources. We cannot guarantee or give any warranty about the information provided. Interested parties must rely solely on their own enquiries.