



Andrews Farm, 6 Glenthorne Crescent

Brand New 5 Bedroom Family Home in Thriving St Andrews Estate



For Lease

\$680 per week

View

By Appointment

Contact

Wendy Page

wendy.page@ljhces.com.au

OPEN INSPECTION TIME: Click REQUEST INSPECTION button on website listing

Rent: \$680.00 Per week

Bond: \$2,720

Available Date: 23/06/2025

Owners Intent to Sell: No intent advised

12 Month Lease

Pets Negotiable

Smoking outside only

Apply online at: www.2apply.com

You are welcome to complete an application form online prior to viewing.



Disclaimer: All information contained therein is gathered from relevant third parties sources.

We cannot guarantee or give any warranty about the information provided. Interested parties must rely solely on their own enquiries.

**LJ Hooker Craigmore | Elizabeth |
Salisbury
(08) 8255 9555**

Once you have signed up for an inspection time on the website listing, we will contact you via text message with a viewing time.

Do not call for a viewing time; one will be allocated to you once you have signed up via the website.

There will be no exceptions to this process.

Be the very first to enjoy this stunning, brand-new build in the sought-after St Andrews development! Brought to you by LJ Hooker Craigmores/Elizabeth/Salisbury, this spacious family home offers the perfect blend of modern living and suburban tranquility.

Escape the city rush without sacrificing convenience. St Andrews is a safe, welcoming community where you can make the most of open green spaces and beautifully designed streetscapes. And the nearby Northern Expressway makes your commute, or a weekend trip to the Barossa Valley, a breeze.

Why you'll love living here:

- Master Suite Retreat: A generously sized master bedroom features a luxurious ensuite and a large walk-in robe.
- Spacious Secondary Bedrooms: Three additional well-proportioned bedrooms with quality built-in robes. Plus the flexible floor plan offers a 2nd Living Area that can easily be used as a 5th Bedroom
- Year-Round Comfort: Enjoy perfect temperatures with ducted reverse cycle air conditioning throughout the entire home.
- Double the Living Space: Your choice - Unwind in your dedicated formal lounge or gather with loved ones in the separate family/living room or occupy the formal lounge as a 5th Bedroom.
- Seamless Entertaining: The open-plan, light-filled family area flows effortlessly to the alfresco, perfect for indoor/outdoor entertaining.
- Chef's Delight Kitchen A modern kitchen awaits, complete with 900mm stainless steel appliances, stone benchtops, dishwasher and a spacious walk-in pantry.
- Secure Parking: A two-car garage with an automatic roller door provides internal access, and external access to the back yard for your convenience.
- Effortless Living: Low-maintenance front and back yards mean more time for you to enjoy your new home.
- Appliances, internal blinds, and landscaping will be completed.

This property won't last long! Be the first to enjoy this new home

LJ Hooker Craigmores | Elizabeth | Salisbury: the number one Real Estate Agents / Sale Agents and Property Management in the Northern Suburbs of South Australia.

Specialists in: Andrews Farm, Angle Vale, Blakeview, Burton, Craigmores, Davoren Park, Elizabeth and surrounding, Gawler, Hillbank, Munno Para, One Tree Hill, Parafield, Para Hills, Paralowie, Salisbury, Smithfield.

Disclaimer:

We have in preparing this document used our best endeavours to ensure the information contained is true and accurate, but accept no responsibility and disclaim all liability in



Disclaimer: All information contained therein is gathered from relevant third parties sources. We cannot guarantee or give any warranty about the information provided. Interested parties must rely solely on their own enquiries.

**LJ Hooker Craigmores | Elizabeth |
Salisbury
(08) 8255 9555**

respect to any errors, omissions, inaccuracies or misstatements contained. Prospective tenants should make their own enquiries to verify the information contained in this document.

RLA155355

More About this Property

Property ID 67A4FDC

Property Type House

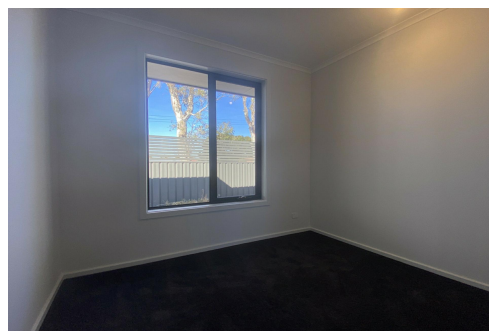
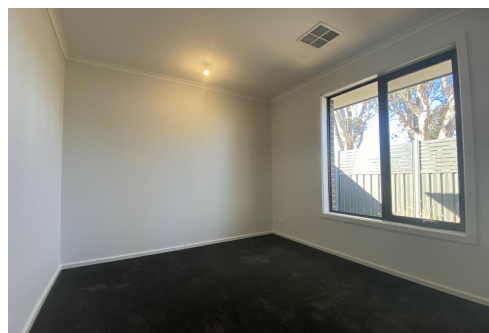
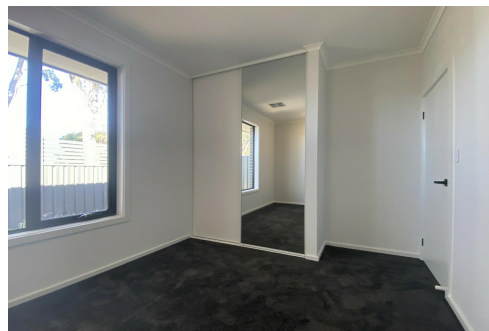
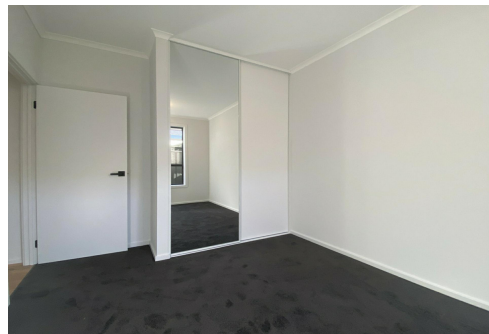
Wendy Page

Property Investment Department Manager | wendy.page@ljhces.com.au

LJ Hooker Craigmore | Elizabeth | Salisbury (08) 8255 9555

Shop 17, Craigmore Village, Yorktown Road, CRAIGMORE SA 5114

craigmoreelizabeth.ljhooker.com.au | Office@ljhces.com.au



Disclaimer: All information contained therein is gathered from relevant third parties sources.

We cannot guarantee or give any warranty about the information provided. Interested parties must rely solely on their own enquiries.

**LJ Hooker Craigmore | Elizabeth |
Salisbury
(08) 8255 9555**

