



## Andrews Farm, 563 Stebonheath Road

Striking on Stebonheath



OPEN INSPECTION TIME: Apply online at: [www.2apply.com](http://www.2apply.com) to view

Rent: \$540.00

Bond: \$2,160.00

Available Date: 03/02/2025

6/12 Month Lease

Smoking outside only

**For Lease**  
Please Call

**View**  
[ljhooker.com.au/66S0FDC](http://ljhooker.com.au/66S0FDC)

**Contact**  
**Wendy Page**  
[wendy.page@ljhces.com.au](mailto:wendy.page@ljhces.com.au)

You are required to complete an application form online prior to viewing. If your application looks suitable, you will be contacted to organise a viewing time.

There will be no exceptions to this process.

Apply online at: [www.2apply.com](http://www.2apply.com)

- Three generous sized carpeted bedrooms
- Master bedroom located at the end of the home with ensuite and walk in robe



**LJ Hooker Craigmore | Elizabeth | Salisbury**  
**(08) 8255 9555**

**Disclaimer:** All information contained therein is gathered from relevant third parties sources. We cannot guarantee or give any warranty about the information provided. Interested parties must rely solely on their own enquiries.

- Bedrooms two and three featuring built in robes
- Open plan kitchen, living and dining (carpeted living and dining)
- Kitchen with all the essentials; ideal cupboard space and a breakfast bar
- Centrally located main bathroom
- Single garage with direct access to the home

Close to Shopping Centre, Transport, Educational Facilities

LJ Hooker Craigmores | Elizabeth | Salisbury: the number one Real Estate Agents / Sale Agents and Property Management in the Northern Suburbs of South Australia.

Specialists in: Andrews Farm, Angle Vale, Blakeview, Burton, Craigmores, Davoren Park, Elizabeth and surrounding, Gawler, Hillbank, Munno Para, One Tree Hill, Parafield, Para Hills, Paralowie, Salisbury, Smithfield.

Disclaimer:

We have in preparing this document used our best endeavours to ensure the information contained is true and accurate, but accept no responsibility and disclaim all liability in respect to any errors, omissions, inaccuracies or misstatements contained. Prospective tenants should make their own enquiries to verify the information contained in this document.

RLA155355

## More About this Property

<b>Property ID</b>	66S0FDC
<b>Property Type</b>	House

### Wendy Page

Property Investment Department Manager | [wendy.page@ljhces.com.au](mailto:wendy.page@ljhces.com.au)

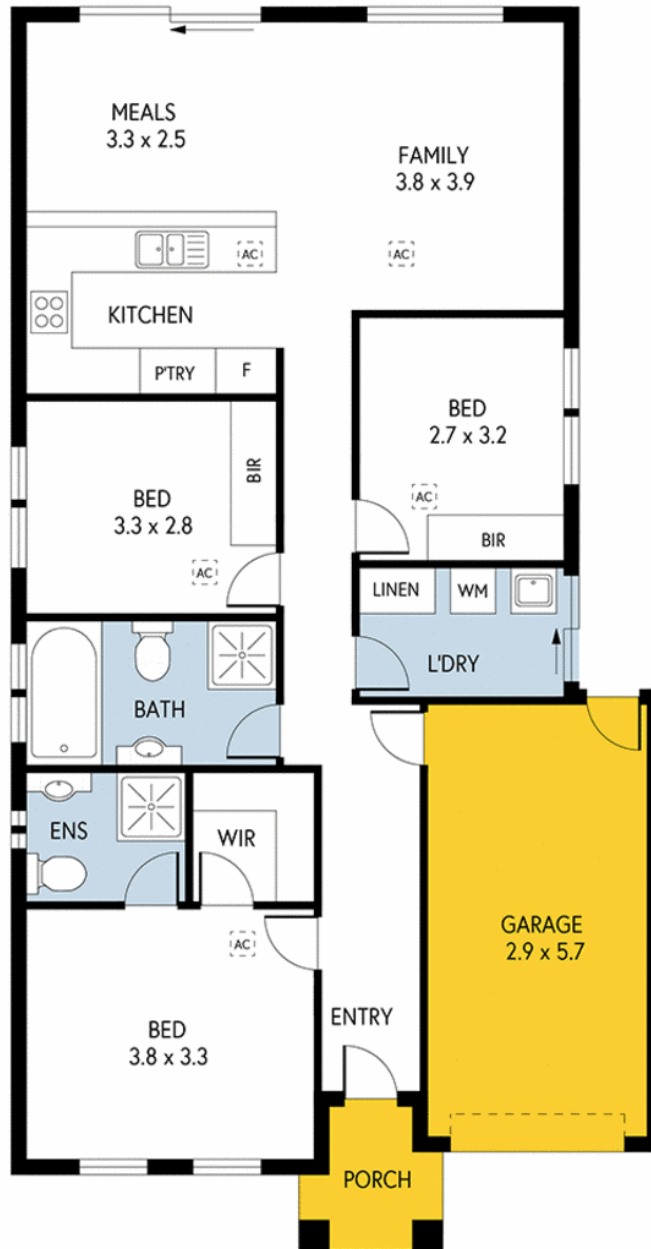
### LJ Hooker Craigmores | Elizabeth | Salisbury (08) 8255 9555

Shop 17, Craigmores Village, Yorktown Road, CRAIGMORE SA 5114  
[craigmoreselizabeth.ljhooker.com.au](mailto:craigmoreselizabeth.ljhooker.com.au) | [Office@ljhces.com.au](mailto:Office@ljhces.com.au)



**Disclaimer:** All information contained therein is gathered from relevant third parties sources. We cannot guarantee or give any warranty about the information provided. Interested parties must rely solely on their own enquiries.

**LJ Hooker Craigmores | Elizabeth | Salisbury (08) 8255 9555**



522 STEBONHEATH ROAD, ANDREWS FARM

INTERNAL - 120.6 SQM  
 EXTERNAL - 3.1 SQM  
 TOTAL - 123.7 SQM

Please Note: Every care has been taken to verify the correctness of the areas and details used in this leaflet. No warranty or representation is given or made as to the correctness of the information supplied and neither the owners, illustrator nor the Agent accept responsibility for errors or omissions. The sketch is for illustration purposes only and intending purchasers should satisfy themselves independently regarding sizes, layout and location of the property. Please check with local council that all structures are approved by council.

PRODUCED BY CLIQUECREATIVE