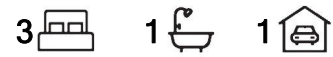




## Andrews Farm, 533 Stebonheath Road

### Three Bed Villa



TO REGISTER AND INSPECT THIS PROPERTY VISIT: <https://tenantoptions.com.au/>

\*\* Only applicants who have inspected the property will be considered \*\*

LJ Hooker Property Specialists are proud to present this wonderful 3 bedroom home available for rent in Andrews Farm.

Features of this property include, but are not limited to:

- \* 3 bedrooms
- \* Master with walk-in robe and access to 2-way bathroom
- \* Carpet to bedrooms and vinyl to living
- \* Well-presented kitchen with ample cupboard space
- \* Open plan dining and lounge, overlooking rear yard
- \* Bathroom with separate shower and bath for the kids
- \* Split system heating / cooling



**Disclaimer:** All information contained therein is gathered from relevant third parties sources. We cannot guarantee or give any warranty about the information provided. Interested parties must rely solely on their own enquiries.

**For Lease**  
Please Call

**View**  
[ljhooker.com.au/2B02GJU](https://ljhooker.com.au/2B02GJU)

**Contact**  
**Rohanne Hall**  
[rohanneb@ljhpropertymanagement.com.au](mailto:rohanneb@ljhpropertymanagement.com.au)

**LJ Hooker Greenwith | Golden Grove  
| Mawson Lakes | Modbury  
(08) 8289 6660**

- \* Single carport with direct access to house
- \* Well-presented low maintenance front and rear yard
- \* Pets negotiable

Enjoy the convenience of a location close to shops, schools and natural reserves. With nearby transport options and easy access to major roads, commuting to the Adelaide CBD is a breeze!

Please contact us during office hours on 8289 6660 (Monday-Friday 9am-5.30pm) if you have any queries regarding the application process. If your queries relate to an open inspection time, please be advised that all open times are updated every Friday by close of business. If you are unable to attend the open inspection or there are no open times scheduled, please send your enquiry through this website.

RLA 208516

## More About this Property

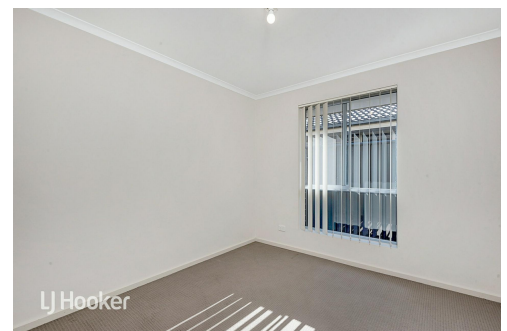
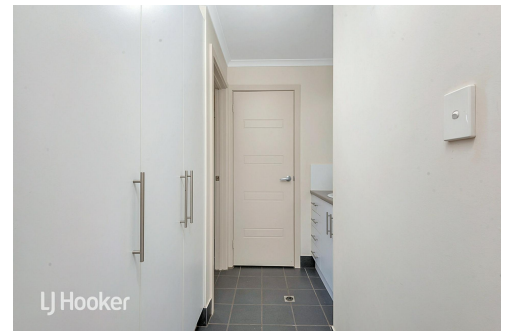
<b>Property ID</b>	2B02GJU
<b>Property Type</b>	House
<b>Land Area</b>	300 sqm

### Rohanne Hall

Property Investment Specialist | rohanneb@ljhpropertymanagement.com.au

### LJ Hooker Greenwith | Golden Grove | Mawson Lakes | Modbury (08) 8289 6660

North East, Shop 2, 1007 North East Road, RIDGEHAVEN SA 5097  
[greenwithgoldengrove.ljhooker.com.au](http://greenwithgoldengrove.ljhooker.com.au) | [info@ljhsupport.com.au](mailto:info@ljhsupport.com.au)



**Disclaimer:** All information contained therein is gathered from relevant third parties sources. We cannot guarantee or give any warranty about the information provided. Interested parties must rely solely on their own enquiries.

**LJ Hooker Greenwith | Golden Grove  
 | Mawson Lakes | Modbury  
 (08) 8289 6660**