

Andrews Farm, 5 Angove Street

Your Dream Home Awaits



OPEN INSPECTION TIME: Click REQUEST INSPECTION button on website listing

Rent: \$590.00 Per week

Bond: \$2,360.00

Available Date: 7/03/2025

Owners Intent to Sell: No intent advised

12 Month Lease

Pets Negotiable

Smoking outside only

Apply online at: www.2apply.com

You are welcome to complete an application form online prior to viewing.

Once you have signed up for an inspection time on the website listing, we will contact you



Disclaimer: All information contained therein is gathered from relevant third parties sources. We cannot guarantee or give any warranty about the information provided. Interested parties must rely solely on their own enquiries.

For Lease
Please Call

View
ljhooker.com.au/66W6FDC

Contact
Wendy Page
wendy.page@ljhces.com.au

**LJ Hooker Craigmore | Elizabeth |
Salisbury
(08) 8255 9555**

via text message with a viewing time.

Do not call for a viewing time; one will be allocated to you once you have signed up via the website.

There will be no exceptions to this process.

Discover the perfect blend of modern comfort and serene living in this stunning brand-new home in Andrews Farm.

Key Features:

- Spacious Living: Multiple living areas
- Luxurious Bedrooms: Expansive master suite with walk-in robe and ensuite, plus three additional spacious bedrooms with built-in robes
- Kitchen: Modern kitchen with breakfast bar
- Outdoor Oasis: Alfresco area perfect for entertaining
- Energy Efficient: Ducted reverse cycle air conditioning
- Secure Living: Double garage with automatic roller door
- Convenient Location: Close to schools, shops, and public transport

Experience the Andrews Farm lifestyle:

- Tranquil Surroundings: Enjoy the peace and quiet of this family-friendly neighbourhood
- Nearby Amenities: Easy access to Munno Para Shopping City, Elizabeth City Centre, and the Northern Expressway
- Outdoor Adventures: Explore the nearby West Parkway Reserve and Smith Creek Trail

LJ Hooker Craigmore | Elizabeth | Salisbury: the number one Real Estate Agents / Sale Agents and Property Management in the Northern Suburbs of South Australia.

Specialists in: Andrews Farm, Angle Vale, Blakeview, Burton, Craigmore, Davoren Park, Elizabeth and surrounding, Gawler, Hillbank, Munno Para, One Tree Hill, Parafield, Para Hills, Paralowie, Salisbury, Smithfield.

Disclaimer:

We have in preparing this document used our best endeavours to ensure the information contained is true and accurate, but accept no responsibility and disclaim all liability in respect to any errors, omissions, inaccuracies or misstatements contained. Prospective tenants should make their own enquiries to verify the information contained in this document.

RLA155355



**LJ Hooker Craigmore | Elizabeth |
Salisbury
(08) 8255 9555**

Disclaimer: All information contained therein is gathered from relevant third parties sources. We cannot guarantee or give any warranty about the information provided. Interested parties must rely solely on their own enquiries.

More About this Property

Property ID 66W6FDC

Property Type House

Wendy Page

Property Investment Department Manager | wendy.page@ljhces.com.au

LJ Hooker Craigmore | Elizabeth | Salisbury (08) 8255 9555

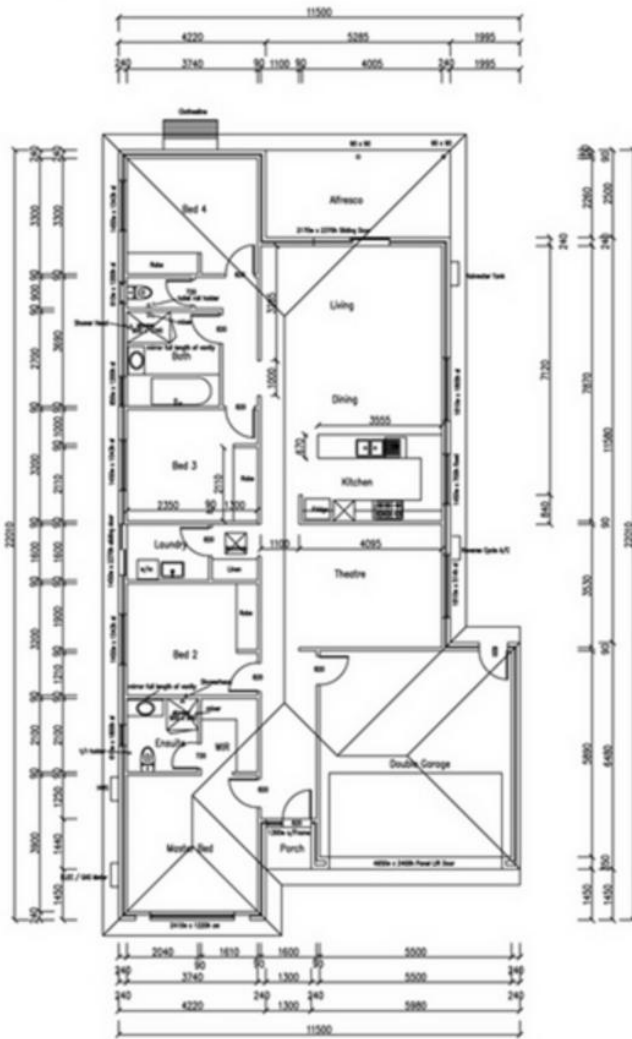
Shop 17, Craigmore Village, Yorktown Road, CRAIGMORE SA 5114
craigmoreelizabeth.ljhooker.com.au | Office@ljhces.com.au



Disclaimer: All information contained therein is gathered from relevant third parties sources.

We cannot guarantee or give any warranty about the information provided. Interested parties must rely solely on their own enquiries.

**LJ Hooker Craigmore | Elizabeth |
Salisbury
(08) 8255 9555**



NOTES

- Brick Veneer to lower level
- Lines Cladding to Facade
- INSULATION
- External Insulation R2.5
- Ceiling R4.0
- 450mm Eaves
- Lift off hinges to wet areas
- 2042 Doors throughout
- 2700mm Ceiling Height Lower Level
- Colourbond roof of 25 Deg to lower and upper level
- Colourbond fascia and gutters
- 450mm Eaves as per plan
- Shower screens and shower doors will be located at the discretion of the supplier unless otherwise noted
- Shower heads and mixer taps will be located where necessary at the discretion of Aquira Homes
- Teflon Terminate Protection to all Penetrations And Entire Perimeter
- Downpipes will be placed as and where necessary at the discretion of Aquira Homes
- Markings on plans are to be taken as indicative locations only
- Smoke Alarms to be hardwired and interconnected

AREAS (SQM)	
181.75	Living
37.50	Garage
1.55	Porch
13.75	Attic/void
214.55	TOTAL

CLIENT TO CONFIRM
BOUNDARIES ARE TRUE
AND CORRECT PRIOR
TO CONSTRUCTION

FLOOR PLAN