

# Andrews Farm, 47 Riesling Crescent

## Modern 3 Bedroom Home



OPEN INSPECTION TIME: Click REQUEST INSPECTION button on website listing

Rent: \$490.00 Per week

Bond: \$1,960.00

Available Date: 24/07/2024

12 Month Lease

Pets Negotiable

Smoking outside only

Apply online at: [www.2apply.com](http://www.2apply.com)

You are welcome to complete an application form online prior to viewing.

Once you have signed up for an inspection time on the website listing, we will contact you



**Disclaimer:** All information contained therein is gathered from relevant third parties sources. We cannot guarantee or give any warranty about the information provided. Interested parties must rely solely on their own enquiries.

**For Lease**  
Please Call

**View**  
[ljhooker.com.au/65WDFDC](http://ljhooker.com.au/65WDFDC)

**Contact**  
**Benjamin Watkins**  
0419 988 388  
[benjamin.watkins@ljhces.com.au](mailto:benjamin.watkins@ljhces.com.au)

**LJ Hooker Craigmore | Elizabeth | Salisbury**  
**(08) 8255 9555**

via text message with a viewing time.

Do not call for a viewing time; one will be allocated to you once you have signed up via the website.

- There will be no exceptions to this process.
- 3 bedrooms - main with ensuite
- 2 bathrooms
- Walk-in robe to the master, built-in robes to bedrooms 2 & 3
- Open plan living area
- Ducted reverse cycle air conditioning
- Low maintenance gardens

LJ Hooker Craigmore | Elizabeth | Salisbury: the number one Real Estate Agents / Sale Agents and Property Management in the Northern Suburbs of South Australia.

Specialists in: Andrews Farm, Angle Vale, Blakeview, Burton, Craigmore, Davoren Park, Elizabeth and surrounding, Gawler, Hillbank, Munno Para, One Tree Hill, Parafield, Para Hills, Paralowie, Salisbury, Smithfield.

Disclaimer:

We have in preparing this document used our best endeavours to ensure the information contained is true and accurate, but accept no responsibility and disclaim all liability in respect to any errors, omissions, inaccuracies or misstatements contained. Prospective tenants should make their own enquiries to verify the information contained in this document.

RLA155355

## More About this Property

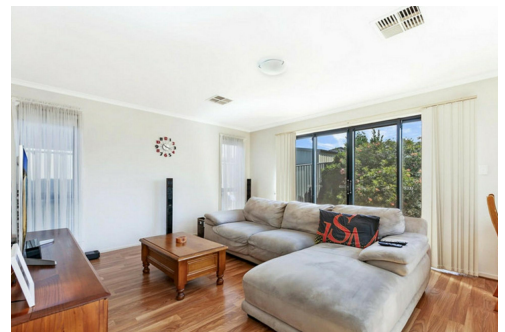
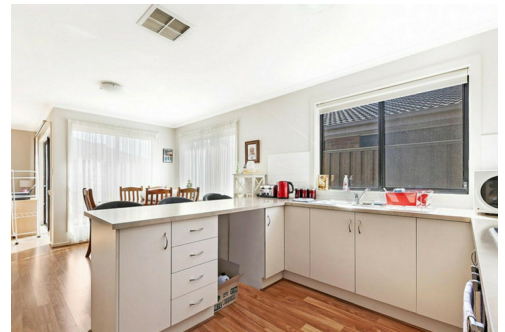
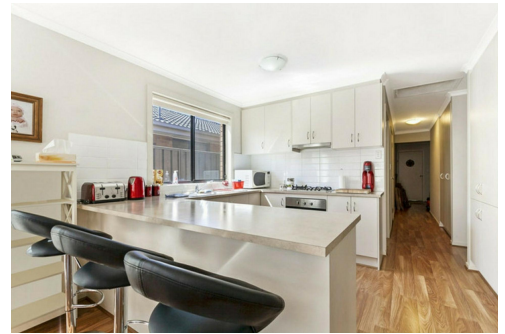
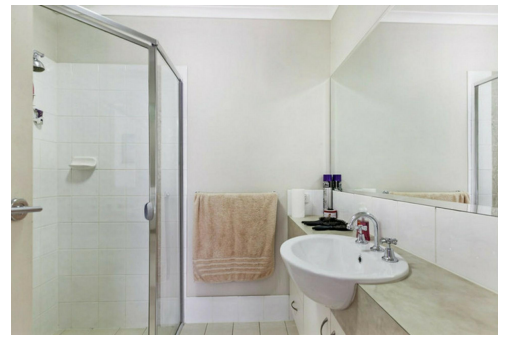
<b>Property ID</b>	65WDFDC
<b>Property Type</b>	House
<b>Land Area</b>	300 sqm

**Benjamin Watkins 0419 988 388**

Office Manager | Investment Advisor | [benjamin.watkins@ljhces.com.au](mailto:benjamin.watkins@ljhces.com.au)

**LJ Hooker Craigmore | Elizabeth | Salisbury (08) 8255 9555**

Shop 17, Craigmore Village, Yorktown Road, CRAIGMORE SA 5114  
[craigmoreelizabeth.ljhooker.com.au](mailto:craigmoreelizabeth.ljhooker.com.au) | [Office@ljhces.com.au](mailto:Office@ljhces.com.au)



**Disclaimer:** All information contained therein is gathered from relevant third parties sources. We cannot guarantee or give any warranty about the information provided. Interested parties must rely solely on their own enquiries.

**LJ Hooker Craigmore | Elizabeth |  
Salisbury  
(08) 8255 9555**