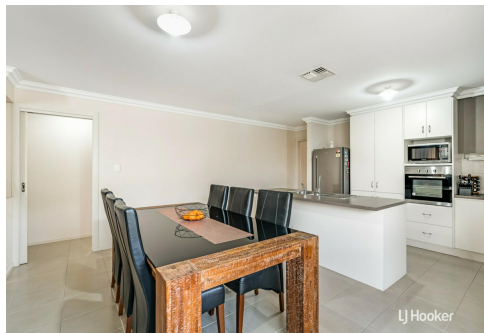




LJ Hooker



LJ Hooker



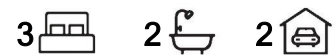
LJ Hooker



LJ Hooker

Andrews Farm, 43 Semillon Crescent

3 Bedroom Family Home



OPEN INSPECTION TIME: Click REQUEST INSPECTION button on website listing

Rent: \$530.00 Per week

Bond: \$2120.00

Available Date: 26/5/2025

12 Month Lease

Pets Negotiable

Smoking outside only

For Lease

\$530 per week

View

By Appointment

Contact

Wendy Page

wendy.page@ljhces.com.au

Apply online at: www.2apply.com

You are welcome to complete an application form online prior to viewing.

Once you have signed up for an inspection time on the website listing, we will contact you via text message with a viewing time.



Disclaimer: All information contained therein is gathered from relevant third parties sources.

We cannot guarantee or give any warranty about the information provided. Interested parties must rely solely on their own enquiries.

**LJ Hooker Craigmore | Elizabeth |
Salisbury
(08) 8255 9555**

Do not call for a viewing time; one will be allocated to you once you have signed up via the website.

There will be no exceptions to this process.

3 Bedroom Family Home

Features we love:

- Master bedroom with walk in robe and ensuite
- Spacious bedrooms 2 and 3 both offering a built in robes
- Light filled open plan kitchen / living and dining
- Formal lounge / second living space or 4th bedroom - it's your choice
- Heating and Cooling for added comfort all year round
- Roomy kitchen with an island bench and stainless steel appliances including gas cooktop
- Contemporary main bathroom with separate bath and shower
- Separate laundry with external access
- Pitched roof pergola for entertaining guests
- Double Garage with Panel Lift door for under cover parking and added security
- Fully fenced rear yard, for peace of mind while the children play
- Garden/tool shed

Ideally located close to a variety of schools including Andrews Farm Community Preschool, St. Columbia College, Mark Oliphant College and Adelaide North Special School.

All the shopping and entertainment that you could need close by at Munno Para Shopping City and Elizabeth City Centre as they are only a few minutes away or enjoy a round of golf at the nearby Playford Lakes golf course.

All this and only 40 minutes (approximately) to the CBD via the Northern Expressway.

LJ Hooker Craigmore | Elizabeth | Salisbury: the number one Real Estate Agents / Sale Agents and Property Management in the Northern Suburbs of South Australia.

Specialists in: Andrews Farm, Angle Vale, Blakeview, Burton, Craigmore, Davoren Park, Elizabeth and surrounding, Gawler, Hillbank, Munno Para, One Tree Hill, Parafield, Para Hills, Paralowie, Salisbury, Smithfield.

Disclaimer:

We have in preparing this document used our best endeavours to ensure the information contained is true and accurate, but accept no responsibility and disclaim all liability in respect to any errors, omissions, inaccuracies or misstatements contained. Prospective tenants should make their own enquiries to verify the information contained in this document.

RLA155355



**LJ Hooker Craigmore | Elizabeth |
Salisbury
(08) 8255 9555**

Disclaimer: All information contained therein is gathered from relevant third parties sources. We cannot guarantee or give any warranty about the information provided. Interested parties must rely solely on their own enquiries.

More About this Property

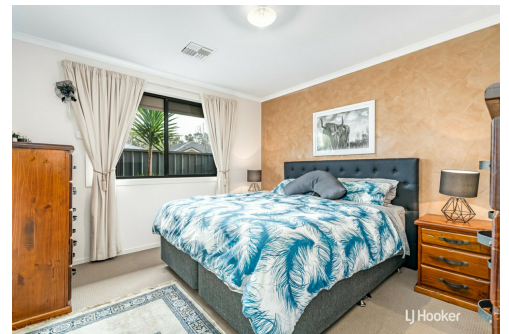
Property ID	6744FDC
Property Type	House
Land Area	430 sqm

Wendy Page

Property Investment Department Manager | wendy.page@ljhces.com.au

LJ Hooker Craigmores | Elizabeth | Salisbury (08) 8255 9555

Shop 17, Craigmores Village, Yorktown Road, CRAIGMORE SA 5114
craigmoreselizabeth.ljhooker.com.au | Office@ljhces.com.au



Disclaimer: All information contained therein is gathered from relevant third parties sources. We cannot guarantee or give any warranty about the information provided. Interested parties must rely solely on their own enquiries.

**LJ Hooker Craigmores | Elizabeth | Salisbury
(08) 8255 9555**