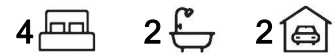




Andrews Farm, 4 Harrow Avenue

4 Bedroom - Beautiful NEW Build!



OPEN INSPECTION TIME: Apply online at: www.2apply.com to view

Rent: \$610.00

Bond: \$2,440.00

Available Date: 26/07/2024

6/12 Month Lease

Pets Negotiable

Smoking outside only

Apply online at: www.2apply.com

You are welcome to complete an application form online prior to viewing.

Once you have signed up for an inspection time on the website listing, we will contact you



Disclaimer: All information contained therein is gathered from relevant third parties sources. We cannot guarantee or give any warranty about the information provided. Interested parties must rely solely on their own enquiries.

For Lease
Please Call

View
ljhooker.com.au/65WNFDC

Contact
Wendy Page
wendy.page@ljhces.com.au

**LJ Hooker Craigmore | Elizabeth |
Salisbury
(08) 8255 9555**

via text message with a viewing time.

Do not call for a viewing time; one will be allocated to you once you have signed up via the website.

There will be no exceptions to this process.

4 Bedroom - Beautiful NEW Build!

- Open Plan Living
- Cozy Family Room
- Zoned Ducted Heating and Cooling
- Double Car Garage
- Master Bedroom with Ensuite & Walkin Robe
- Dishwasher & Large Stove/Oven
- Low Maintenance Gardens

LJ Hooker Craigmore | Elizabeth | Salisbury: the number one Real Estate Agents / Sale Agents and Property Management in the Northern Suburbs of South Australia.

Specialists in: Andrews Farm, Angle Vale, Blakeview, Burton, Craigmore, Davoren Park, Elizabeth and surrounding, Gawler, Hillbank, Munno Para, One Tree Hill, Parafield, Para Hills, Paralowie, Salisbury, Smithfield.

Disclaimer:

We have in preparing this document used our best endeavours to ensure the information contained is true and accurate, but accept no responsibility and disclaim all liability in respect to any errors, omissions, inaccuracies or misstatements contained. Prospective tenants should make their own enquiries to verify the information contained in this document.

RLA155355

More About this Property

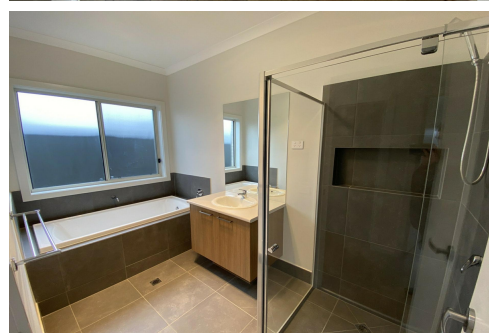
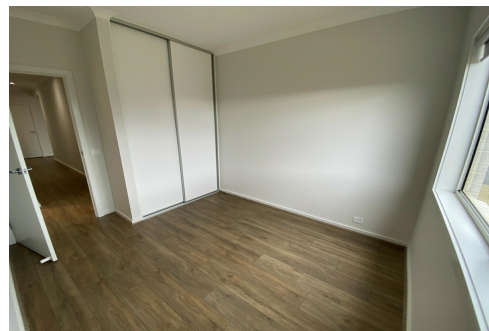
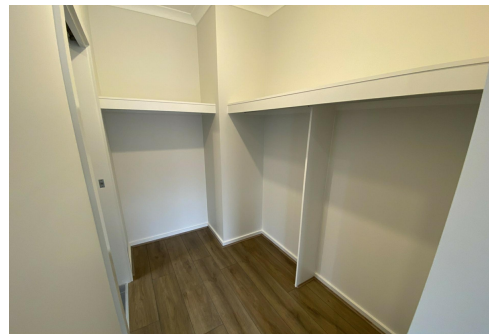
Property ID	65WNFDC
Property Type	House

Wendy Page

Property Investment Department Manager | wendy.page@ljhces.com.au

LJ Hooker Craigmore | Elizabeth | Salisbury (08) 8255 9555

Shop 17, Craigmore Village, Yorktown Road, CRAIGMORE SA 5114
craigmoreelizabeth.ljhooker.com.au | Office@ljhces.com.au



Disclaimer: All information contained therein is gathered from relevant third parties sources. We cannot guarantee or give any warranty about the information provided. Interested parties must rely solely on their own enquiries.

**LJ Hooker Craigmore | Elizabeth |
Salisbury
(08) 8255 9555**

Legend

- | | | | | |
|---|--|--|---|---|
| <ul style="list-style-type: none"> Single Power Point @ 200mm Double Power Point @ 200mm Single Power Point @ 650mm for cooktop electronic ignition Single Power Point @ 600mm on sep. circuit Single Power Point @ 750mm Single Power Point @ 1050mm Double Power Point @ 1050mm Double Power Point @ 1500mm Single Power Point @ 1500mm Single Weather Proof P.Point @ 1050mm | <ul style="list-style-type: none"> Double Weather Proof P.Point @ 1050mm Single Power Point to Ceiling Single Power Point @ 400mm Ceiling Light Outlet Low Voltage Downlight (DIH#21) Internal Wall Light @1750mm (42W) External Wall Light @2100mm (Min. 40LW) (15 Watts) Light Outlet & Sgl. P.Point to Roof (42W) LED Downlight (DLC3 White) | <ul style="list-style-type: none"> Water Proof Light Switch Junction Box on Wall @2100mm Smoke Detector Exhaust Fan with Draft Stoppers Exhaust Fan T.V. Point Cat 6 Phone Cat 6 Data Rinnai Infinity Control Point Air Conditioning Unit 3 in 1 Exhaust Fan/Heat | <ul style="list-style-type: none"> H.W.U. Position Instantaneous H.W.S. Position Meter Box Gas Meter Internal Fuse Box Floor Tiling Timber Flooring Carpet Flooring | <ul style="list-style-type: none"> Roof Access Split System A/C Wall Unit Split System A/C Outdoor Unit Waterproof 40 Amp Isolator for A/C Unit NBN Wall Mounted NBN Provision |
|---|--|--|---|---|



Note: All light switches are located 1050mm from floor level unless noted otherwise

