



Andrews Farm, 214 President Avenue

Great sized family home in Andrews Farm



OPEN INSPECTION TIME: Click REQUEST INSPECTION button on website listing

Rent: \$530.00 Per week

Bond: \$2,120.00

Available Date: 07/07/2025

Owners Intent to Sell: No intent advised

12 Month Lease

Pets Negotiable

Smoking outside only

For Lease
Please Call

View
ljhooker.com.au/67E6FDC

Contact
Wendy Page
wendy.page@ljhces.com.au

Apply online at: www.2apply.com

You are welcome to complete an application form online prior to viewing.

Once you have signed up for an inspection time on the website listing, we will contact you



Disclaimer: All information contained therein is gathered from relevant third parties sources. We cannot guarantee or give any warranty about the information provided. Interested parties must rely solely on their own enquiries.

**LJ Hooker Craigmore | Elizabeth |
Salisbury
(08) 8255 9555**

via text message with a viewing time.

Do not call for a viewing time; one will be allocated to you once you have signed up via the website.

There will be no exceptions to this process.

Some of the features include:

- Ducted Heating and Cooling
- Secure double garage
- Built-in robes across all bedrooms
- Modern 2019 build
- Alfresco area
- Stone Bench Tops

LJ Hooker Craigmore | Elizabeth | Salisbury: the number one Real Estate Agents / Sale Agents and Property Management in the Northern Suburbs of South Australia.

Specialists in: Andrews Farm, Angle Vale, Blakeview, Burton, Craigmore, Davoren Park, Elizabeth and surrounding, Gawler, Hillbank, Munno Para, One Tree Hill, Parafield, Para Hills, Paralowie, Salisbury, Smithfield.

Disclaimer:

We have in preparing this document used our best endeavours to ensure the information contained is true and accurate, but accept no responsibility and disclaim all liability in respect to any errors, omissions, inaccuracies or misstatements contained. Prospective tenants should make their own enquiries to verify the information contained in this document.

RLA155355

More About this Property

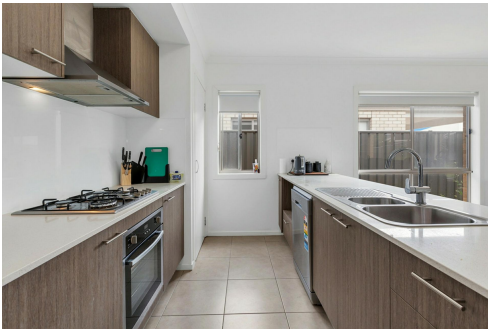
Property ID	67E6FDC
Property Type	House
Land Area	375 sqm

Wendy Page

Property Investment Department Manager | wendy.page@ljhces.com.au

LJ Hooker Craigmore | Elizabeth | Salisbury (08) 8255 9555

Shop 17, Craigmore Village, Yorktown Road, CRAIGMORE SA 5114
craigmoreelizabeth.ljhooker.com.au | Office@ljhces.com.au



Disclaimer: All information contained therein is gathered from relevant third parties sources. We cannot guarantee or give any warranty about the information provided. Interested parties must rely solely on their own enquiries.

**LJ Hooker Craigmore | Elizabeth |
Salisbury
(08) 8255 9555**