



Andrews Farm, 14 Everest Avenue

Spacious 4-Bedroom Family Home in Andrews Farm - Available March 2025



For Lease
Please Call

View
ljhooker.com.au/66V3FDC

Contact
Wendy Page
wendy.page@ljhces.com.au

OPEN INSPECTION TIME: Click REQUEST INSPECTION button on website listing

Rent: \$680.00 Per week

Bond: \$2,720.00

Available Date: 3/03/2025

Owners Intent to Sell: No intent advised

12 Month Lease

Pets Negotiable

Smoking outside only

Apply online at: www.2apply.com

You are welcome to complete an application form online prior to viewing.



Disclaimer: All information contained therein is gathered from relevant third parties sources. We cannot guarantee or give any warranty about the information provided. Interested parties must rely solely on their own enquiries.

**LJ Hooker Craigmore | Elizabeth |
Salisbury
(08) 8255 9555**

Once you have signed up for an inspection time on the website listing, we will contact you via text message with a viewing time.

Do not call for a viewing time; one will be allocated to you once you have signed up via the website.

There will be no exceptions to this process.

LJ Hooker Craigmores/Elizabeth/Salisbury proudly presents this beautifully maintained 4-bedroom, 2-bathroom, 4 living area family home in the heart of Andrews Farm.

Discover the perfect blend of comfort and convenience in this beautifully updated 4-bedroom home at 14 Everest Ave, Andrews Farm. Freshly painted with new carpets in the lounge and bedrooms, and easy-care tiles in living areas.

Highlights:

- Spacious layout with vaulted ceiling lounge and open-plan meals/family area.
- Modern kitchen with stainless steel appliances and breakfast bar.
- Master bedroom with ensuite and walk-in robe.
- Second bedroom with walk-in robe, and built-in robes in bedrooms 3 & 4.
- Ducted cooling for year-round comfort.
- Double drive-through garage with rear roller door.
- Under-roof alfresco area for entertaining.
- Secure with security doors and window screens.
- Convenient location near St Columba College, transport, and Elizabeth City Centre.

Available March 3rd, 2025. Don't miss this opportunity!

LJ Hooker Craigmores | Elizabeth | Salisbury: the number one Real Estate Agents / Sale Agents and Property Management in the Northern Suburbs of South Australia.

Specialists in: Andrews Farm, Angle Vale, Blakeview, Burton, Craigmores, Davoren Park, Elizabeth and surrounding, Gawler, Hillbank, Munno Para, One Tree Hill, Parafield, Para Hills, Paralowie, Salisbury, Smithfield.

Disclaimer:

We have in preparing this document used our best endeavours to ensure the information contained is true and accurate, but accept no responsibility and disclaim all liability in respect to any errors, omissions, inaccuracies or misstatements contained. Prospective tenants should make their own enquiries to verify the information contained in this document.

RLA155355



**LJ Hooker Craigmores | Elizabeth |
Salisbury
(08) 8255 9555**

Disclaimer: All information contained therein is gathered from relevant third parties sources. We cannot guarantee or give any warranty about the information provided. Interested parties must rely solely on their own enquiries.

More About this Property

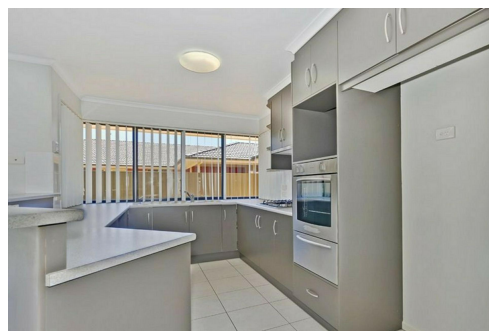
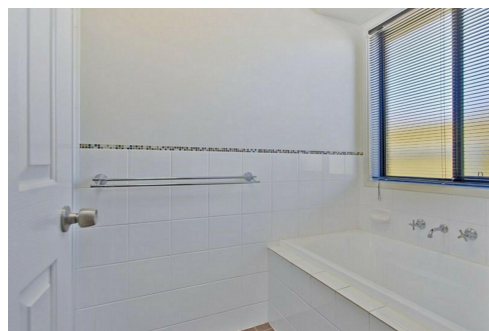
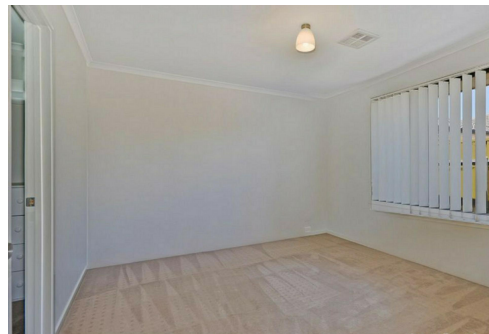
Property ID	66V3FDC
Property Type	House
Land Area	583 sqm

Wendy Page

Property Investment Department Manager | wendy.page@ljhces.com.au

LJ Hooker Craigmore | Elizabeth | Salisbury (08) 8255 9555

Shop 17, Craigmore Village, Yorktown Road, CRAIGMORE SA 5114
craigmoreelizabeth.ljhooker.com.au | Office@ljhces.com.au



Disclaimer: All information contained therein is gathered from relevant third parties sources. We cannot guarantee or give any warranty about the information provided. Interested parties must rely solely on their own enquiries.

**LJ Hooker Craigmore | Elizabeth |
Salisbury
(08) 8255 9555**

