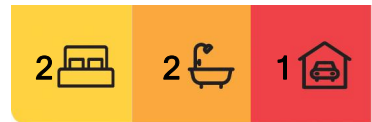




## Allawah, 4/418-420 Railway Parade

### Ground Floor Apartment with Courtyard



Located in a modern well maintained security complex this ground floor rear apartment features:

- Two bedrooms with built-in wardrobes
- Main bedroom with ensuite
- Combined lounge & dining
- Modern kitchen with granite bench tops, gas cooking & stainless steel appliances
- Internal laundry
- Large tiled court yard with access from lounge and bedroom
- Security car space

Located within minutes walk to Allawah transport and shops.

**For Lease**  
Please Call

**View**  
[ljhooker.com.au/BY3HEE](http://ljhooker.com.au/BY3HEE)

**Contact**  
**Anna Hall**  
02 9580 8887  
[anna.hall@ljhooker.com.au](mailto:anna.hall@ljhooker.com.au)



**LJ Hooker Hurstville**  
**(02) 9580 8887**

**Disclaimer:** All information contained therein is gathered from relevant third parties sources. We cannot guarantee or give any warranty about the information provided. Interested parties must rely solely on their own enquiries.

## More About this Property

**Property ID** BY3HEE

**Property Type** Unit

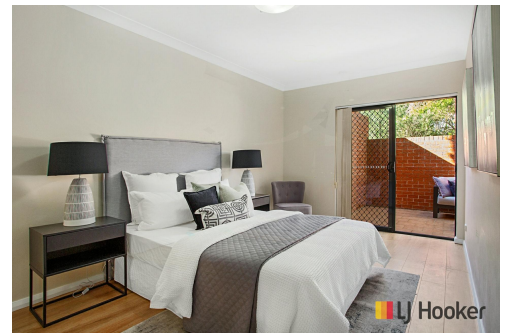
**Anna Hall 02 9580 8887**

Property Investment Manager | [anna.hall@ljhooker.com.au](mailto:anna.hall@ljhooker.com.au)

**LJ Hooker Hurstville (02) 9580 8887**

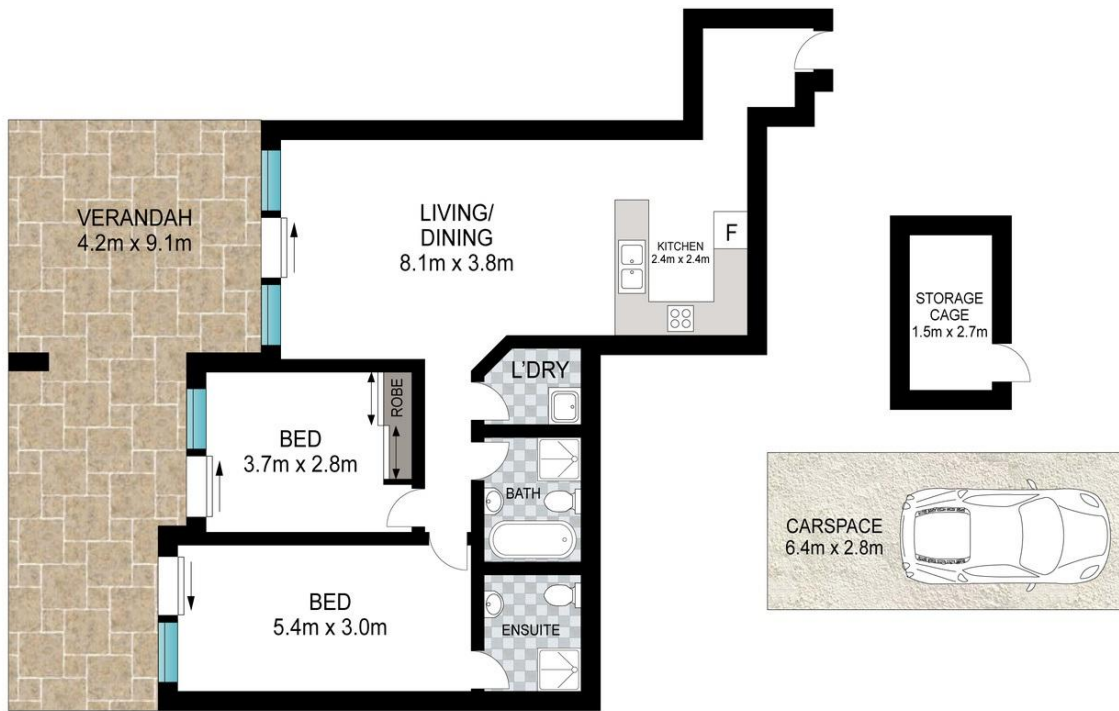
Shop 6, 182 Forest Road, HURSTVILLE NSW 2220

[hurstville.ljhooker.com.au](http://hurstville.ljhooker.com.au) | [hurstville@ljhooker.com.au](mailto:hurstville@ljhooker.com.au)



**LJ Hooker Hurstville**  
**(02) 9580 8887**

**Disclaimer:** All information contained therein is gathered from relevant third parties sources. We cannot guarantee or give any warranty about the information provided. Interested parties must rely solely on their own enquiries.



Scale in metres. Indicative only. Dimensions are approximate. All information contained herein is gathered from sources we believe to be reliable. However, we cannot guarantee its accuracy and interested persons should rely on their own enquiries.



4/418 Railway Parade, Allawah