



5 Herbert Street, Albert Park

Spacious Family Home with Comfort & Convenience

To register for an open inspection, simply click 'Enquire' or 'Request an Inspection'. We'll then send you an email to register your attendance for viewing and provide further details about the property and application process. Registration will ensure you are advised on any new or updated inspection times.

ABOUT THE PROPERTY

Welcome to 5 Herbert Street, Albert Park

This well-presented courtyard home offers generous proportions and comfortable living, ideal for families or those seeking extra space.

The light-filled living room is enhanced by charming bay windows and a ceiling fan, creating a relaxed and inviting atmosphere. Accommodation includes three generously sized, carpeted bedrooms, all fitted with ceiling fans for year-round comfort.

The bathroom is well appointed with a shower, bathtub, vanity and a separate toilet for added practicality. The kitchen is thoughtfully designed, featuring a breakfast bar and four-burner cooktop, and

3 1 2

FOR RENT

Please Call

AGENTS

Sharon Trowbridge
rent@ljhglenelgbrighton.com.au

AGENCY

LJ Hooker Glenelg | Brighton
(08) 8294 6000

All information contained therein is gathered from relevant third parties sources. We cannot guarantee or give any warranty about the information provided. Interested parties must rely solely on their own enquiries.



overlooks the meals area with a recently installed split system reverse cycle air conditioner - perfect for everyday living and entertaining.

Step outside to a low-maintenance yard complete with a storage shed, while secure parking is provided by a single garage plus additional driveway space.

Key features include:

- Living room with ceiling fan and bay windows
- Three generously sized carpeted bedrooms, all with ceiling fans
- Bathroom with shower, bathtub, vanity and separate toilet
- Well-appointed kitchen with breakfast bar and four-burner cooktop overlooking meals area
- Low-maintenance outdoor yard with storage shed
- Secure single garage with additional driveway parking

Located close to schools, transport and shops and only 9km from Adelaide CBD this property is ideally located for families and professionals alike.

EASE TERM: 12 Months

AVAILABLE FROM: 20/02/2026

WATER CHARGES: Tenant to pay supply and water use

PET POLICY: Small Outdoor Pet up to 10kgs negotiable

EXCLUSIONS: Security System

INSPECTION: Register to view

APPLYING FOR THIS PROPERTY

Please note applications will not be processed until:

- > The property has been viewed in person or someone has viewed it on your behalf
- > All occupants over 18 years have completed the application form
- > Photo ID has been provided
- > Proof of Income (Pay slip/Bank balance/Centrelink) has been provided

TO INSPECT THIS HOME

Click the 'Enquire' or 'Request an Inspection' button to register for our upcoming open inspections. We manage our enquiries through Tenant Options and recommend registering your interest to stay updated throughout every step of the leasing process.

All information provided has been obtained from sources we believe to be accurate, however, we cannot guarantee the information is accurate and we accept no liability for any errors or omissions (including but not limited to a property's land size, floor plans and size, building age and condition) Interested parties should make their own enquiries and obtain their own legal advice.

RLA 277721

MORE DETAILS

Property ID Q0AGW0
Property Type House
Including Air Conditioning
Toilets (1)
Courtyard
Secure Parking

Sharon Trowbridge

Property Investment Specialist | rent@ljhglenelgbrighton.com.au

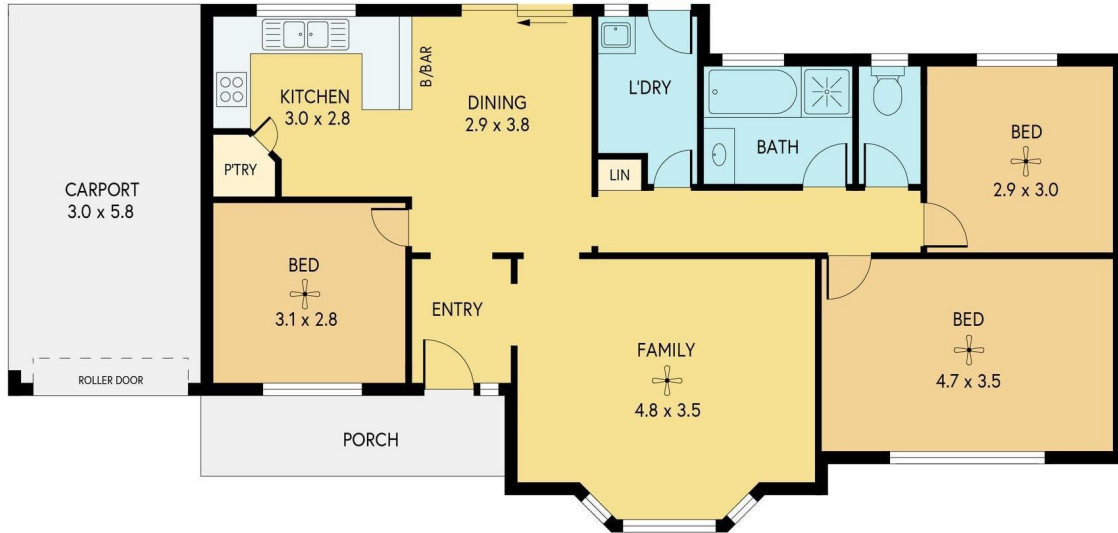
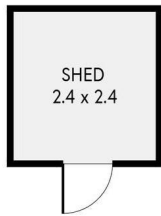
LJ Hooker Glenelg | Brighton (08) 8294 6000

76 Oaklands Road, SOMERTON PARK SA 5044

glenelgbrighton.ljhooker.com.au | rebecca@ljhglenelgbrighton.com.au



All information contained therein is gathered from relevant third parties sources.
We cannot guarantee or give any warranty about the information provided.
Interested parties must rely solely on their own enquiries.



5 HERBERT STREET, ALBERT PARK

INTERNAL - 103.6 SQM
EXTERNAL - 29.5 SQM
TOTAL - 133.1 SQM

Scale in metres. Indicative only. Dimensions are approximate.
All information contained is gathered from sources we believe are reliable.
However, we cannot guarantee its accuracy and interested persons should rely on their own enquiries.



All information contained therein is gathered from relevant third parties sources.
We cannot guarantee or give any warranty about the information provided.
Interested parties must rely solely on their own enquiries.

