



Aintree, 56 Elmhurst Avenue

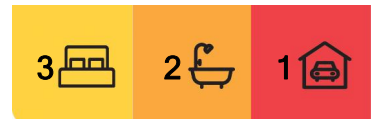
Stylish Townhouse, only 1 Minute Walk to Shops!
APPLICATIONS NOW OPEN

The Property

LJ Hooker Property Point presents 56 Elmhurst Avenue, Aintree. This beautifully designed double-storey townhouse offers a seamless blend of style and practicality. Boasting three spacious bedrooms, two bathrooms, and a variety of living spaces, this home is perfect for families or professionals. Positioned in the sought-after suburb of Aintree, enjoy convenient access to parks, schools, shopping centres, and transport links.

The Point of Difference

- The master bedroom serves as a private retreat, featuring a generous walk-in robe, a well-appointed ensuite, and exclusive access to a serene balcony. The additional two bedrooms are fitted with built-in robes and share a centrally located bathroom, ensuring comfort and convenience for family members or guests.
- The contemporary kitchen is a culinary delight, equipped with high-quality stainless steel



For Lease
Please Call

View
ljhooker.com.au/2GA9HGH

LJ Hooker Point Cook
(03) 9975 7080

Disclaimer: All information contained therein is gathered from relevant third parties sources. We cannot guarantee or give any warranty about the information provided. Interested parties must rely solely on their own enquiries.

appliances, including an oven, gas cooktop, and dishwasher. Ample storage solutions are provided through a spacious pantry and overhead cupboards, while sleek benchtops offer extensive space for meal preparation and casual dining experiences.

- Designed with modern living in mind, the home features a light-filled open-plan living and dining area that seamlessly integrates with the kitchen. This harmonious space is ideal for both entertaining guests and enjoying everyday family life, with large windows inviting an abundance of natural light.

- Step into the inviting outside area, an extension of the indoor living space that provides a versatile setting for year-round outdoor dining and entertaining. This private oasis is perfect for hosting gatherings or simply unwinding in the fresh air.

- Additional features of this impressive home include a secure single-car garage with internal access, providing both convenience and peace of mind. Year-round comfort is assured with efficient heating and cooling systems, and a separate laundry adds to the home's practical appeal.

The Point of Interest

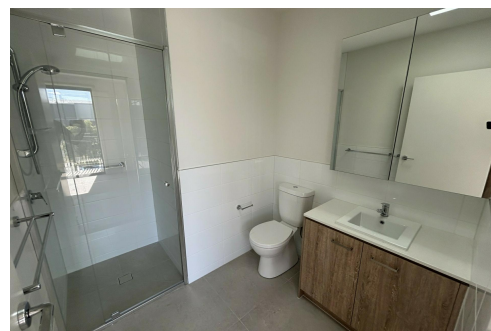
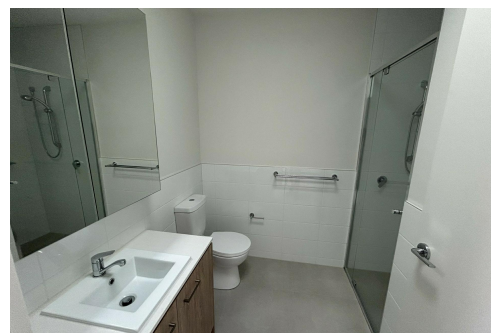
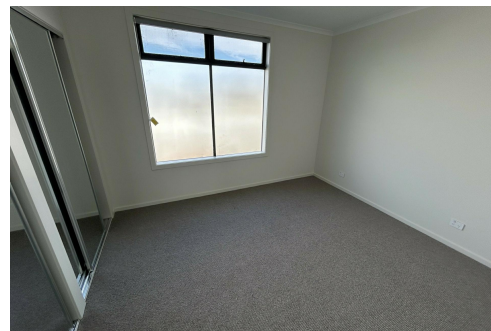
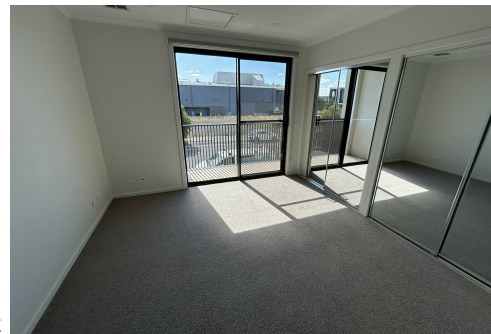
Ideally situated in Aintree, 56 Elmshurst offers an exceptional lifestyle with an abundance of nearby amenities. As per the latest information available at findmyschool.vic.gov.au, the property is zoned for Aintree Primary School and Yarrabing Secondary College, providing families with access to quality education options. Additionally, residents will appreciate the proximity to Woodlea Town Centre, offering a variety of shopping and dining experiences. Numerous parks and playgrounds are within walking distance, promoting an active and outdoor lifestyle. Public transport options and easy access to major roads and freeways ensure a seamless commute to Melbourne's CBD and surrounding areas.

Note: All stated dimensions are approximate only. Particulars given are for general information only and do not constitute any representation on the part of the vendor or agent. Any school zoning stated is based on findmyschool.vic.gov.au as of 01/04/2025. Identification is required on entry to all private and public inspections.

More About this Property

Property ID	2GA9HGH
Property Type	Townhouse

LJ Hooker Point Cook (03) 9975 7080
Shop 211, 4 Main Street, POINT COOK VIC 3030
pointcook.ljhooker.com.au | pointcook@ljhooker.com.au



LJ Hooker Point Cook
(03) 9975 7080

Disclaimer: All information contained therein is gathered from relevant third parties sources. We cannot guarantee or give any warranty about the information provided. Interested parties must rely solely on their own enquiries.