

Aintree, 2 Shaw Street

Spacious & Stylish Four-Bedroom Retreat in a Coveted Setting

2 Shaw Street, Aintree

LJ Hooker is proud to present this stunning family home in the heart of Woodlea Estate - one of Melbourne's fastest-growing and most vibrant communities. Offering the perfect blend of style, space, and convenience, this property is ideal for families seeking comfort with modern living.

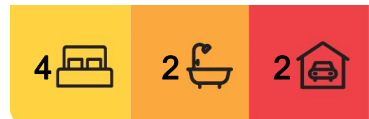
Surrounded by parklands, walking trails, playgrounds, top schools, shopping, and cafés, residents enjoy a true community lifestyle, just 40 minutes from the CBD.

Key Features:

- 4 oversized bedrooms with floor-to-ceiling built-in wardrobes



Disclaimer: All information contained therein is gathered from relevant third parties sources. We cannot guarantee or give any warranty about the information provided. Interested parties must rely solely on their own enquiries.



For Lease
\$580 per week

View
By Appointment

Contact
Shubham Dhuhan
shubham@ljhookerbm.com.au

LJ Hooker Melton
(03) 8797 5588

- Modern kitchen with stone benchtops and quality appliances
 - Spacious open-plan living and dining areas
 - Sleek bathrooms with generous storage and a bathtub in the main
 - Ducted heating
 - Double remote-control garage with internal access
 - Ample storage throughout
 - Expansive backyard and well-presented front yard, ideal for family living and entertaining
- Ideal for families or professionals, this home ticks all the boxes. Don't miss out-book your inspection today!

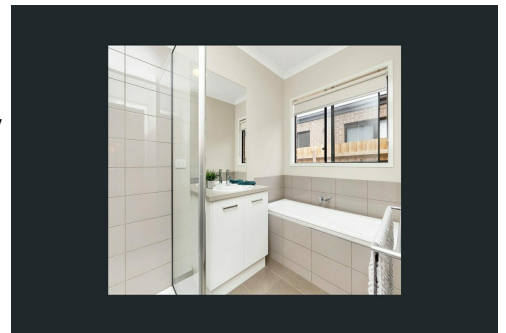
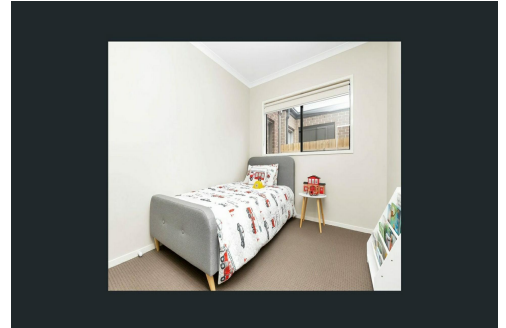
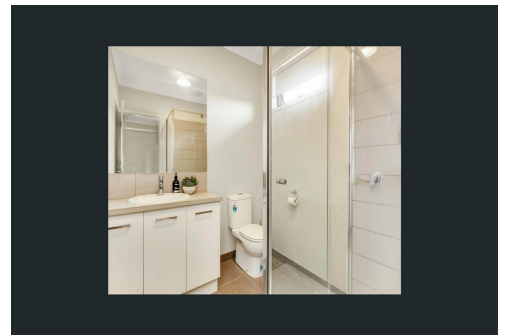
Contact : Shubham 0410817856

*****PHOTO ID REQUIRED AT ALL INSPECTIONS*****

Disclaimer: We have in preparing this document used our best endeavors to ensure that the information contained in this document is true and accurate but accept no responsibility and disclaim all liability with respect to any errors, omissions, inaccuracies, or misstatements in this document.

Prospect renters should make their own inquiries to verify the information contained in this document and refer to the due diligence checklist provided by Consumer Affairs. Click on the link for an updated copy of the due diligence checklist from Consumer Affairs.

<http://www.consumer.vic.gov.au/duediligencechecklist>



More About this Property

Property ID	R9ZHWU
Property Type	House

Shubham Dhuan

Sales Agent | shubham@ljhookerbm.com.au

LJ Hooker Melton (03) 8797 5588

307 High Street, MELTON VIC 3337

melton.ljhooker.com.au | admin@ljhmelton.com.au



LJ Hooker Melton
(03) 8797 5588

Disclaimer: All information contained therein is gathered from relevant third parties sources. We cannot guarantee or give any warranty about the information provided. Interested parties must rely solely on their own enquiries.