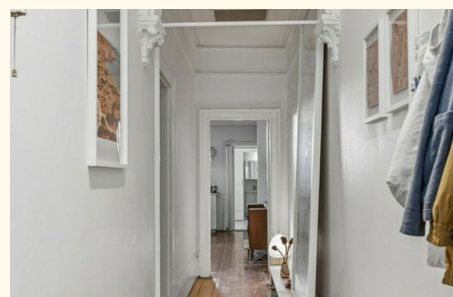



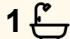
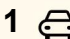


Adelaide Metro

Leased



9 Cairns Street, Adelaide

2  1  1 

## Renovated Bluestone Cottage - Walk to Hutt Street Dining

Renovated character bluestone cottage just minutes from Hutt Street cafes, restaurants, and the Adelaide Park Lands. Stylish, light-filled, and low-maintenance - the perfect lock-up-and-leave city base in a quiet south-east CBD street.

Behind its attractive bluestone facade, the home features polished timber floorboards and a light-filled open-plan living and dining space. The renovated kitchen includes modern finishes, a dishwasher and excellent storage, while the updated bathroom and separate laundry add everyday practicality

Two generous bedrooms with built-in robes offer comfortable accommodation, and ducted reverse cycle air conditioning ensures year-round comfort. Enjoy morning walks through the Adelaide Park Lands, coffee on Hutt Street, and the convenience of city living at your doorstep.

Features include:

- Renovated bluestone character cottage
- Two spacious bedrooms with built-in robes
- Open-plan living and dining

### FOR RENT

Please Call

### AGENTS

Amanda Walasek

0431 017 416

resileasing.stpeters@ljhadelaidemetro.com.au

Kirsty Clark

0422 005 721

kirsty.clark@ljhadelaidemetro.com.au

### AGENCY

LJ Hooker St Peters

(08) 8362 8008

All information contained therein is gathered from relevant third parties sources. We cannot guarantee or give any warranty about the information provided. Interested parties must rely solely on their own enquiries.

 LJ Hooker

- Renovated kitchen with dishwasher
- Updated bathroom and separate laundry
- Ducted reverse cycle air conditioning
- Polished timber floorboards
- Charming front garden
- street undercover parking
- Walk to Hutt Street dining precinct
- Moments to the Adelaide Park Lands
- Easy access to CBD & public transport

Living at 9 Cairns Street places you within easy reach of Adelaide's best CBD amenities. The Adelaide Central Market and the lively dining scene along Gouger and Grote Streets are just moments away, while the expansive Adelaide Park Lands—including Rymill Park and Victoria Park—provide beautiful green space for walking, cycling and outdoor recreation. Well-regarded schools such as Gilles Street Primary and Botanic High School are within easy reach, along with the University of Adelaide, making the location ideal for professionals and families alike.

Water charges: Water usage and supply charges apply

Furniture: Unfurnished

Exclude: Fireplaces

**NOTE ABOUT THE OPEN INSPECTIONS:** Interested persons **MUST** register their details to attend any of the scheduled viewing dates and times allocated. The agent will not attend the listed viewing date and time if you do not register and confirm your attendance. It is for this reason we highly recommend you register to attend to ensure the agent's attendance and to avoid disappointment.

**Disclaimer:** All information provided has been obtained from sources we believe to be accurate, however, we cannot guarantee the information is accurate and we accept no liability for any errors or omissions. We encourage all interested parties to make their own enquiries, particularly regarding NBN/internet availability at the property.

## MORE DETAILS

Property ID	2E2FFDZ
Property Type	House
Including	Air Conditioning Secure Parking

### Amanda Walasek 0431 017 416

Residential Leasing Agent |  
resileasing.stpeters@ljhadelaidemetro.com.au

### Kirsty Clark 0422 005 721

Business Development Manager |  
kirsty.clark@ljhadelaidemetro.com.au

### LJ Hooker St Peters (08) 8362 8008

2a Portrush Road, PAYNEHAM SA 5070  
stpeters.ljhooker.com.au | stpeters@ljhadelaidemetro.com.au

