

Adelaide, 202/83-85 South Terrace

2 Bedroom Unit in the Heart of the City

2 1 0

Modern, 2 bedrooms apartment, located just a short walk to the central CBD, markets, award winning restaurants & cafes. Universities and public transport is at your door step! With beautiful views of the South Parkland gardens and Adelaide Hills, this property is not to be missed.

Features:

- Open plan kitchen, dining and lounge area with glass sliding doors leading to the balcony.
- The kitchen features an electric cook top and oven, dishwasher and fridge
- 2 spacious bedrooms.
- Impressive bathroom with large rain head shower and feature tiles.
- Hideaway laundry with washing machine provided.
- Timber floors throughout.
- Intercom and secure foyer access.

For Lease
Please Call

View
ljhooker.com.au/X3VHDM

Contact
Rylee Ingham
pm8@ljhooker.me
Kelli Horsell
pm5@ljhooker.me



LJ Hooker Mile End | Woodville
(08) 8352 7111

Disclaimer: All information contained therein is gathered from relevant third parties sources. We cannot guarantee or give any warranty about the information provided. Interested parties must rely solely on their own enquiries.

- Ducted Reverse Cycle Air conditioning.

Facts:

Photos for display purposes only

Lease term: 12-month lease

Water charge: Tenants responsible for water supply and usage

Pets: As per Strata rules

Other exclusion: No car space

To register your interest and to receive immediate booking confirmation please ensure you follow the below steps:

mileend.ljhooker.com.au - Locate the property and Book an Inspection

realestate.com - click Request an Inspection Time

domain.com - click Email the Agent

By booking an inspection you have made an appointment to view the property, and we will be expecting you personally.

If you are unable to keep the appointment please ensure you cancel your booking via the link on the text or email you receive. We look forward to seeing you there.

More About this Property

Property ID	X3VHDM
Property Type	Apartment
Including	Air Conditioning Toilets (1)

Rylee Ingham

Property Manager Executive | pm8@ljhooker.me

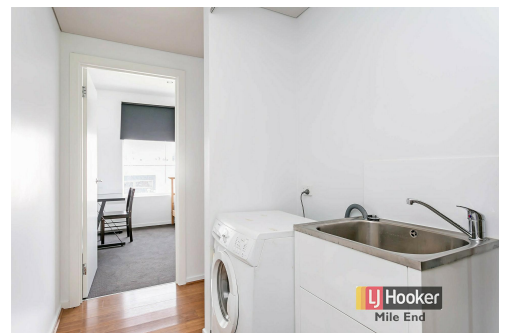
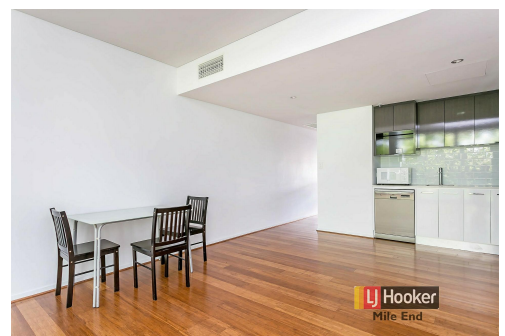
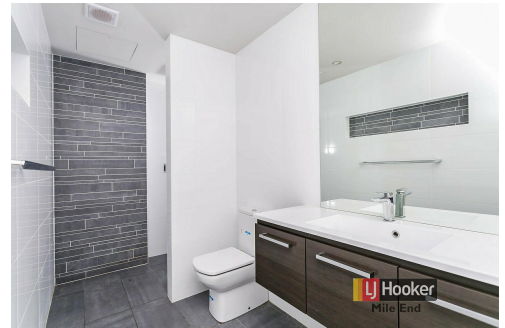
Kelli Horsell

Property Manager | pm5@ljhooker.me

LJ Hooker Mile End | Woodville (08) 8352 7111

206A Henley Beach Road, TORRENSVILLE SA 5031

mileendwoodville.ljhooker.com.au | admin@ljhookermileend.com.au



Disclaimer: All information contained therein is gathered from relevant third parties sources. We cannot guarantee or give any warranty about the information provided. Interested parties must rely solely on their own enquiries.

**LJ Hooker Mile End | Woodville
(08) 8352 7111**