



Aberglasslyn, 35 Birch Grove

Large Family Home with all the Trimmings!

Designed for effortless modern living, this stylish & well-appointed home - only three years young - offers the perfect balance of comfort, functionality, and contemporary appeal. A thoughtfully crafted floor plan ensures seamless indoor to outdoor living, while quality finishes add a touch of elegance throughout. Whether you're entertaining, unwinding, or enjoying time with family, this home caters to every lifestyle need.

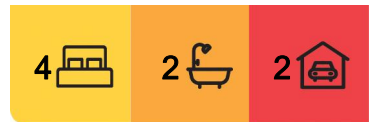
Sleek & Contemporary Design —Open-plan kitchen, living & dining area, designed for connection and flow.

Gourmet Kitchen —Walk-in pantry, stone benchtops, 900mm oven & gas cooktop, perfect for home chefs.

Family-Focused Layout —4 bedrooms with 2 bathrooms, with the master suite privately positioned at the front of the home and complete with ensuite & walk through robe.



Disclaimer: All information contained therein is gathered from relevant third parties sources. We cannot guarantee or give any warranty about the information provided. Interested parties must rely solely on their own enquiries.



For Lease
Please Call

View
ljhooker.com.au/1E1FF6H

Contact
Haylee Williams
maitland@ljhooker.com.au

LJ Hooker Maitland
(02) 4933 5511

Premium Finishes —Plantation shutters throughout, adding style, privacy & light control.

Year-Round Comfort —Ducted air conditioning ensures a perfect climate in every season.

Energy Efficient —Solar power helps keep energy bills low & promotes sustainable living.

Seamless Indoor-Outdoor Living —The open-plan design connects beautifully to outdoor spaces, creating a relaxed & inviting atmosphere.

Spacious Yard —A generous outdoor retreat, ideal for kids, pets & weekend entertaining.

This is a home where style meets practicality, offering everything you need for modern family living!

Pets on application.

Disclaimer: The photos indicating the condition of the advertised property may or may not be an exact reflection of the current condition of the property. If you have any concerns please contact the office to confirm this prior to any inspection.

More About this Property

Property ID	1E1FF6H
Property Type	House
Including	Ensuite Air Conditioning Toilets (2) Built-in-Robes Close to Schools Close to Shops Close to Transport Solar Power

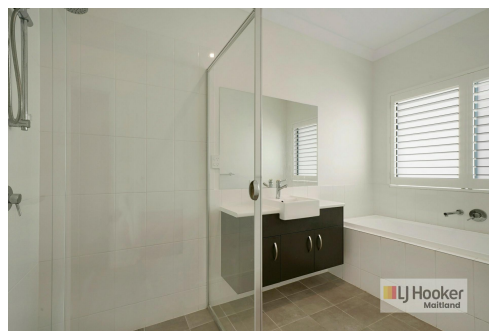
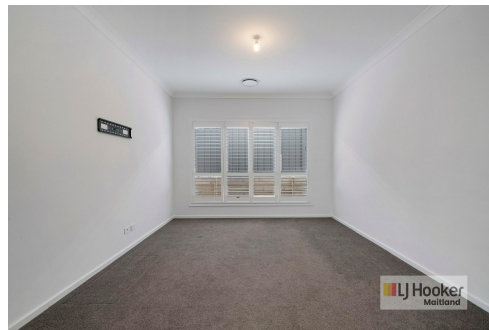
Haylee Williams

Property Investment Manager | maitland@ljhooker.com.au

LJ Hooker Maitland (02) 4933 5511

24 Ken Tubman Drive, MAITLAND NSW 2320

maitland.ljhooker.com.au | maitland@ljhooker.com.au



LJ Hooker Maitland
(02) 4933 5511

Disclaimer: All information contained therein is gathered from relevant third parties sources. We cannot guarantee or give any warranty about the information provided. Interested parties must rely solely on their own enquiries.