



Sussex Inlet, 62 Birkdale Circuit

BIG Opportunity - Corner Block in Golf Course Estate

Nestled in the newly established Sussex Inlet Golf Course Estate, this large 803m2 corner block offers a rare opportunity to build your dream home amidst the serenity of the golf course.

Surrounded by quality homes and boasting picturesque views, this parcel of land provides the perfect canvas for creating your ideal lifestyle.

With ample space for side access, storing your boat or caravan is a breeze.

It's convenient location, just 5km from Sussex Inlet town centre, ensures easy access to shopping, cafes, doctors, and the stunning waterways of the area while still enjoying the tranquillity of country and coast living.

Interested in a house & land package? Check out this beautiful design by a Shoalhaven company, Stroud Homes:

<https://www.stroudhomes.com.au/house-and-land-packages/62-birkdale-circuit-sussex-inlet-2/>



Disclaimer: All information contained therein is gathered from relevant third parties sources. We cannot guarantee or give any warranty about the information provided. Interested parties must rely solely on their own enquiries.



LAND 803 m2

For Sale
\$550,000

Contact
Unity Naismith
0421 715 899
unaismith.sussexinlet@ljhooker.com.au
John Naismith
0475 362 647
jnaismith.sussexinlet@ljhooker.com.au

LJ Hooker Sussex Inlet
(02) 4441 2135

<https://www.stroudhomes.com.au/house-and-land-packages/62-birkdale-circuit-sussex-inlet/>

Don't miss out on the chance to secure your piece of paradise in this sought-after estate. Contact John or Unity now and start envisioning your future home today.

More About this Property

Property ID	PG8FAY
Property Type	Residential
Land Area	803 m2

Unity Naismith 0421 715 899

Salesperson | unaismith.sussexinlet@ljhooker.com.au

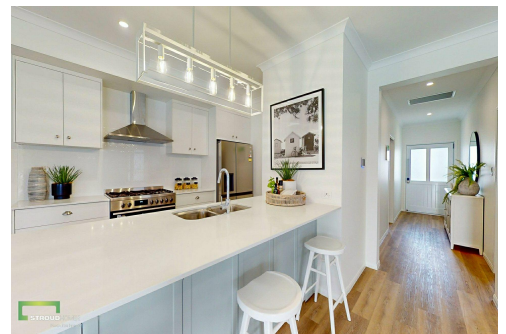
John Naismith 0475 362 647

Salesperson | jnaismith.sussexinlet@ljhooker.com.au

LJ Hooker Sussex Inlet (02) 4441 2135

1/159 Jacobs Drive, SUSSEX INLET NSW 2540

sussexinlet.ljhooker.com.au | sussexinlet@ljhooker.com.au



Disclaimer: All information contained therein is gathered from relevant third parties sources. We cannot guarantee or give any warranty about the information provided. Interested parties must rely solely on their own enquiries.

LJ Hooker Sussex Inlet
(02) 4441 2135

