



## Sussex Inlet, 53 Ray Street

### Build Your Dream Home

Explore the ideal canvas for your dream home on this stunning waterfront reserve property. Nestled in a tranquil and picturesque environment, this block presents an exceptional chance to bring your coastal living aspirations to life.

Less than 500 meters from your doorstep, you'll find the local boat ramp, offering quick and easy access to your aquatic adventures. Spend your weekends indulging in adventures on the water, whether it's fishing, swimming, or simply exploring the breathtaking waterways.

The block features a carport and shed equipped with power and water connections as well as a toilet and shower, offering convenient storage options as you embark on your construction journey.

Leave behind the chaos of city life and embrace the tranquility and serenity of this idyllic location. It's the ultimate destination for rejuvenation and renewal.



**Disclaimer:** All information contained therein is gathered from relevant third parties sources. We cannot guarantee or give any warranty about the information provided. Interested parties must rely solely on their own enquiries.



LAND 746 m<sup>2</sup>

#### For Sale

\$800,000 - \$880,000

#### Contact

##### Zoe Hall

0468 817 504

zhoward.sussexinlet@ljhooker.com.au

##### Unity Naismith

0421 715 899

unaismith.sussexinlet@ljhooker.com.au

**LJ Hooker Sussex Inlet**  
**(02) 4441 2135**

Reach out to us today for more details or to arrange a visit. Your coastal dream home awaits.

## More About this Property

<b>Property ID</b>	PBWFAY
<b>Property Type</b>	Residential
<b>Land Area</b>	746 m <sup>2</sup>

### Zoe Hall 0468 817 504

Licensee | [zhoward.sussexinlet@ljhooker.com.au](mailto:zhoward.sussexinlet@ljhooker.com.au)

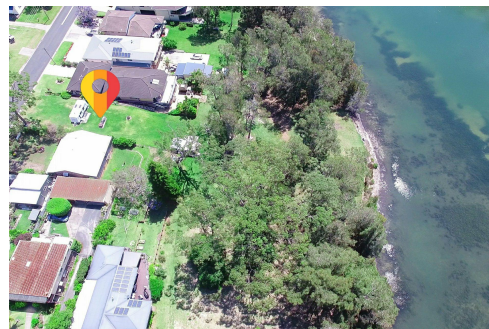
### Unity Naismith 0421 715 899

Salesperson | [unaismith.sussexinlet@ljhooker.com.au](mailto:unaismith.sussexinlet@ljhooker.com.au)

### LJ Hooker Sussex Inlet (02) 4441 2135

1/159 Jacobs Drive, SUSSEX INLET NSW 2540

[sussexinlet.ljhooker.com.au](http://sussexinlet.ljhooker.com.au) | [sussexinlet@ljhooker.com.au](mailto:sussexinlet@ljhooker.com.au)



**LJ Hooker Sussex Inlet**  
**(02) 4441 2135**

**Disclaimer:** All information contained therein is gathered from relevant third parties sources. We cannot guarantee or give any warranty about the information provided. Interested parties must rely solely on their own enquiries.