



Sugarloaf Creek, 1415 Sugarloaf Creek Road

Embrace Rural Living on 57 Acres - Your Dream Awaits!

Here's your chance to secure a slice of serene country living on this expansive 57-acre (approx.) property with sealed road frontage. With the perfect mix of grazing land and potential homesites, this property offers boundless opportunities.

The property features a valuable dam, making it ideal for grazing and farming endeavours. Power is readily available at the boundary, simplifying any future development plans you may have in mind.

Centrally located, this property is just 14km (11 minutes' drive) to the thriving Broadford township, where you'll find both primary and secondary schools, a train station offering V-Line services to the city (only a 70-minute ride away), delightful cafes, and a bustling shopping centre. Enjoy the convenience of city amenities while relishing the tranquillity of rural life. For even more options, the charming town of Tallarook is a mere 10km (10 minutes' drive) away, and Seymour is just 16km (14 minutes' drive) from your doorstep. Adding to the appeal is a lock-up 15m x 7m shed, perfect for use as a weekender or



Disclaimer: All information contained therein is gathered from relevant third parties sources. We cannot guarantee or give any warranty about the information provided. Interested parties must rely solely on their own enquiries.



LAND 57 acre

For Sale
Please Call

Contact
Gavin Henderson
0408 359 764
ghenderson.broadford@ljhooker.com.au

LJ Hooker Broadford | Kilmore
(03) 5784 2558

storage, complete with a concrete floor. A septic tank and water tank has already been installed for your convenience, and the property benefits from rare garbage and recycling collection services.

With numerous potential homesites (subject to council approval), this property offers you the chance to create the rural lifestyle you've always dreamed of. Contact us today to explore the possibilities that this unique property holds. Your dream rural escape is closer than you think!

For more information, please call Gavin Henderson on 0408 359 764.

More About this Property

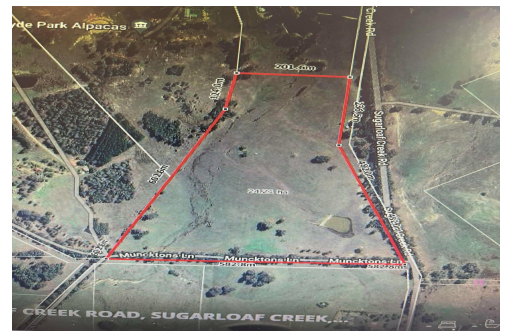
Property ID	79XHJS
Property Type	Residential
Land Area	57 acre

Gavin Henderson 0408 359 764

Principal | ghenderson.broadford@ljhooker.com.au

LJ Hooker Broadford | Kilmore (03) 5784 2558

1629 Broadford Wandong Road, BROADFORD VIC 3658
broadford.ljhooker.com.au | broadford@ljhooker.com.au



Disclaimer: All information contained therein is gathered from relevant third parties sources. We cannot guarantee or give any warranty about the information provided. Interested parties must rely solely on their own enquiries.

LJ Hooker Broadford | Kilmore
(03) 5784 2558