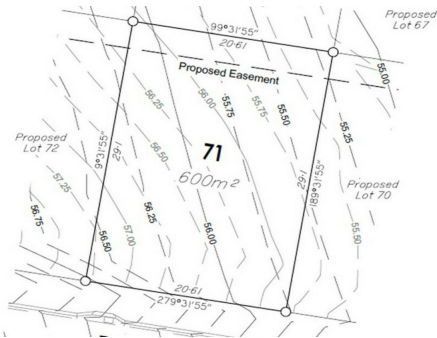


House & Land PACKAGES

Regal Heights



Regents Park, Lot 71/4 Marcus Drive

"REGISTERED LAND" Lot 71 / 4 Marcus Drive, Regents Park

Forming part of a well established owner occupied community, this land release is the final release of blocks for this estate.

Developed with lifestyle and comfortable living in mind, these properties cater to buyers wanting to build a Medium - Large homes, Single or Two Story Design without having to compromise the potential of indoor and outdoor living spaces.

Located in the south-eastern corridor of Brisbane, Regal Heights is accessible to many surrounding locations and suburbs, such as regular public transport routes to local facilities, parklands and retail outlets including Grand Plaza Shopping Center in Browns plains.



LAND 600 m²

For Sale

Please Call

Contact

Mark Todd

0447 880 900

mtodd@ljhcomplete.com.au



LJ Hooker Property Complete
1300 360 388

Disclaimer: All information contained therein is gathered from relevant third parties sources. We cannot guarantee or give any warranty about the information provided. Interested parties must rely solely on their own enquiries.

Within close proximity but not limited to -

- *3 minute to Regents Park State School
- *6 minute to Park Ridge State High School
- *5 minute to Park Ridge Shopping Centre (Supermarket, Fast Food, Medical etc)
- *16 minute to Logan Hospital
- *30 minute to Brisbane CBD
- *50 minutes to Gold Coast



To request further information on this land please contact Mark Todd on 0447 880 900.

More About this Property

Property ID	1KHWHGS
Property Type	Residential
Land Area	600 m ²

Mark Todd

Director - Land Marketing Division | mtodd@ljhcomplete.com.au

LJ Hooker Property Complete 1300 360 388

Level 1, 32 Everglade Street, YARRABILBA QLD 4207

propertycomplete.ljhooker.com.au | admin@ljhcomplete.com.au



LJ Hooker Property Complete
1300 360 388

Disclaimer: All information contained therein is gathered from relevant third parties sources. We cannot guarantee or give any warranty about the information provided. Interested parties must rely solely on their own enquiries.