

Raymond Island, 119 Western Boulevard

EXCEPTIONAL 1696M2 WATERFRONT RESERVE ALLOTMENT WITH JETTY BERTH

A Rare Haven for Lake Enthusiasts! Discover the epitome of lakeside living on this exclusive 1696m2 allotment. Boasting stunning lake vistas, a convenient jetty berth just across the road providing direct access to the tranquil waters that beckon for boating, swimming and paddling adventures. Enjoy the abundance of koalas, bird and wildlife. A rare opportunity to embrace a waterfront lifestyle with all services, excluding natural gas. Don't miss this unique gem!



LAND 1,696 m²

For Sale
Please Call

Contact
Lorraine Edlington
0437 532 860
ledlington.paynesville@ljhooker.com.au



LJ Hooker Paynesville
(03) 5156 6166

Disclaimer: All information contained therein is gathered from relevant third parties sources. We cannot guarantee or give any warranty about the information provided. Interested parties must rely solely on their own enquiries.

More About this Property

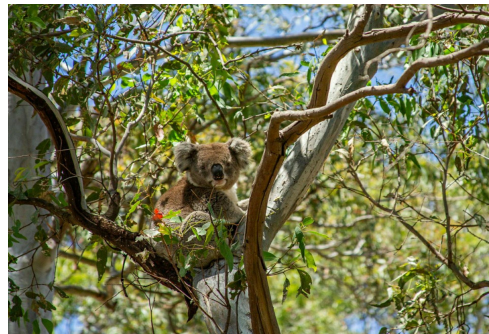
Property ID	M2EFCA
Property Type	Residential
Land Area	1696 m ²

Lorraine Edlington 0437 532 860

Officer In Effective Control | Licensed Estate Agent |
ledlington.paynesville@ljhooker.com.au

LJ Hooker Paynesville (03) 5156 6166

25A Esplanade, PAYNESVILLE VIC 3880
paynesville.ljhooker.com.au | paynesville@ljhooker.com.au



Disclaimer: All information contained therein is gathered from relevant third parties sources.
We cannot guarantee or give any warranty about the information provided. Interested parties must rely solely on their own enquiries.

LJ Hooker Paynesville
(03) 5156 6166