

## Raymond Island, 119 Western Boulevard

### EXCEPTIONAL 1696M2 WATERFRONT RESERVE ALLOTMENT WITH JETTY BERTH

A Rare Haven for Lake Enthusiasts! Discover the epitome of lakeside living on this exclusive 1696m2 allotment. Boasting stunning lake vistas, a convenient jetty berth just across the road providing direct access to the tranquil waters that beckon for boating, swimming and paddling adventures. Enjoy the abundance of koalas, bird and wildlife. A rare opportunity to embrace a waterfront lifestyle with all services, excluding natural gas. Don't miss this unique gem!



LAND 1,696 m2

**For Sale**  
Please Call

**Contact**  
**Lorraine Edlington**  
0437 532 860  
ledlington.paynesville@ljhooker.com.au



**Disclaimer:** All information contained therein is gathered from relevant third parties sources. We cannot guarantee or give any warranty about the information provided. Interested parties must rely solely on their own enquiries.

**LJ Hooker Paynesville | Lakes Entrance | Metung**  
**(03) 5156 6166**

## More About this Property

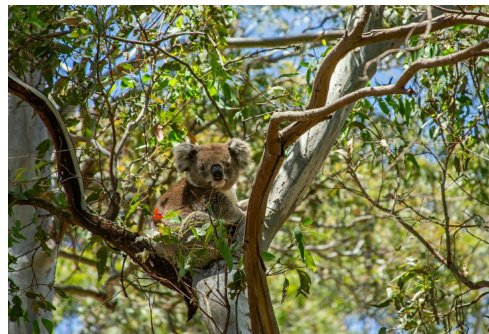
|                      |             |
|----------------------|-------------|
| <b>Property ID</b>   | M2EFCA      |
| <b>Property Type</b> | Residential |
| <b>Land Area</b>     | 1696 m2     |

### Lorraine Edlington 0437 532 860

Officer In Effective Control | Licensed Estate Agent |  
ledlington.paynesville@ljhooker.com.au

### LJ Hooker Paynesville | Lakes Entrance | Metung (03) 5156 6166

25A Esplanade, PAYNESVILLE VIC 3880  
paynesville.ljhooker.com.au | paynesville@ljhooker.com.au



**Disclaimer:** All information contained therein is gathered from relevant third parties sources. We cannot guarantee or give any warranty about the information provided. Interested parties must rely solely on their own enquiries.

**LJ Hooker Paynesville | Lakes Entrance | Metung  
(03) 5156 6166**