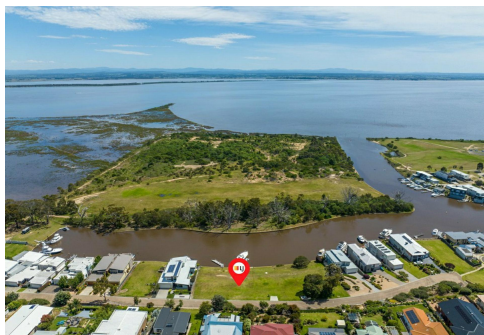
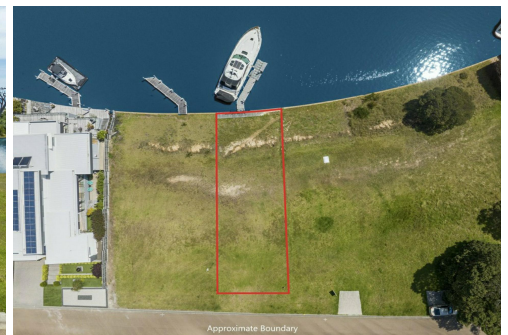




Approximate Boundary



Approximate Boundary



Approximate Boundary

Paynesville, 17 The Inlet

ALLOTMENT ON RIVIERA HARBOURS WITH PRIVATE JETTY BERTH

Discover the epitome of waterfront luxury on this exquisite allotment nestled on Riviera Harbours. Embrace the allure of a pre-constructed jetty berth at the foot of the property. The north facing orientation ensures breathtaking canal views, with the potential for even more captivating lake vistas from a meticulously planned two-storey residence. Seamlessly integrated services add to the allure, promising a lifestyle of utmost convenience. Become the envy of your social circle as you relish daily boating escapades, setting the stage for a life where every moment is a celebration of coastal living at its finest.



LAND 412 m²

For Sale
\$525,000

Contact
Lorraine Edlington
0437 532 860
ledlington.paynesville@ljhooker.com.au



Disclaimer: All information contained therein is gathered from relevant third parties sources. We cannot guarantee or give any warranty about the information provided. Interested parties must rely solely on their own enquiries.

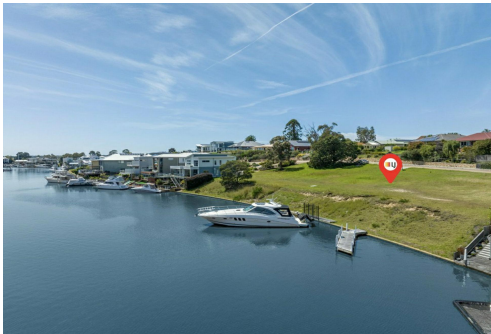
LJ Hooker Paynesville | Lakes Entrance | Metung
(03) 5156 6166

More About this Property

Property ID	M1WFCA
Property Type	Residential
Land Area	412 m²

Lorraine Edlington 0437 532 860
Officer In Effective Control | Licensed Estate Agent |
ledlington.paynesville@ljhooker.com.au

LJ Hooker Paynesville | Lakes Entrance | Metung (03) 5156 6166
25A Esplanade, PAYNESVILLE VIC 3880
paynesville.ljhooker.com.au | paynesville@ljhooker.com.au



Disclaimer: All information contained therein is gathered from relevant third parties sources.
We cannot guarantee or give any warranty about the information provided. Interested parties must rely solely on their own enquiries.

**LJ Hooker Paynesville | Lakes
Entrance | Metung
(03) 5156 6166**