



## Nicholson, 41 Koraleigh View

### 2 ACRES OF ABSOLUTE RIVERFRONT

Set on the banks of the majestic Nicholson River, this 7808m2 block is the largest of the waterfront allotments in the prestigious Riverbend Estate. Offering an easterly aspect to build your dream home to take maximum advantage of the uninterrupted river views this block promises country living at its best. With easy access to the water's edge, this block provides the opportunity to swim, fish or canoe right from your doorstep!

Riverbend is set in the heart of stunning East Gippsland, popular for its proximity to pristine lakes, untouched beaches, and the Victorian Alps. Spend your summers discovering the Gippsland Lakes and surrounding waterfront towns of Paynesville and Metung or head to the 90 Mile Beach at Lakes Entrance just 25 minutes away. East Gippsland has a variety of wineries, country pubs and attractions and the Nicholson River Winery is just around the corner! Winter is sorted with an easy drive to the Victorian snowfields at Dinner Plain and Mount Hotham, or stop at the alpine township of Omeo to explore the mountain bike trails for family adventure!

The Nicholson township offers a Primary School, substantial boat ramp, modern General



LAND 7,808 m2

**For Sale**  
\$699,000

**Contact**  
**Kelly Quirke**  
0427 064 816  
kquirke@ljhookerbairnsdale.com.au  
**Veronica Davies**  
0477 961 338  
vdavies@ljhookerbairnsdale.com.au



**Disclaimer:** All information contained therein is gathered from relevant third parties sources. We cannot guarantee or give any warranty about the information provided. Interested parties must rely solely on their own enquiries.

**LJ Hooker Bairnsdale**  
**(03) 5152 4172**



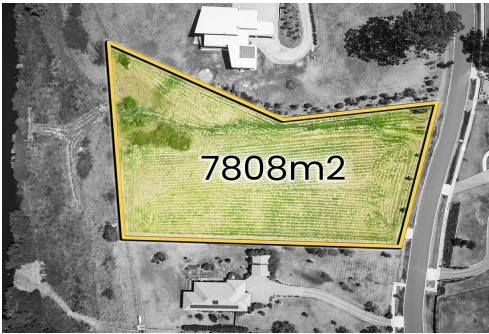
Store, Retreat Hotel and Motel, and the picturesque Nicholson River Caravan Park. With the major township of Bairnsdale only a 10-minute commute, this gorgeous block makes the perfect base for family's or retirees! Don't let this opportunity pass you by!

## More About this Property

Property ID	12QTFBF
Property Type	Residential
Land Area	7808 m2

**Kelly Quirke 0427 064 816**  
Sales Consultant | [kquirke@ljhookerbairnsdale.com.au](mailto:kquirke@ljhookerbairnsdale.com.au)  
**Veronica Davies 0477 961 338**  
Sales Consultant | [vdavies@ljhookerbairnsdale.com.au](mailto:vdavies@ljhookerbairnsdale.com.au)

**LJ Hooker Bairnsdale (03) 5152 4172**  
195 Main Street, BAIRNSDALE VIC 3875  
[bairnsdale.ljhooker.com.au](mailto:bairnsdale.ljhooker.com.au) | [bairnsdale@ljhookerbairnsdale.com.au](mailto:bairnsdale@ljhookerbairnsdale.com.au)



**Disclaimer:** All information contained therein is gathered from relevant third parties sources. We cannot guarantee or give any warranty about the information provided. Interested parties must rely solely on their own enquiries.

**LJ Hooker Bairnsdale**  
**(03) 5152 4172**