

Moama, 3 Bayaderra Court

Murray River Lifestyle!

Your search is now over...with this opportunity to build the home and lifestyle you have dreamt of on one of the few blocks of land available in this highly sought-after and exclusive estate in Moama.

This generous 1500m² (approx) block has a great aspect to position your home to take advantage of the winter sun and is surrounded by some of the most luxurious homes in Moama.

All services are connected with NBN, underground power, gas, sewerage, filtered water and raw water for your greenkeeper quality lawns.

Your new home is a short walk to Moama RSL and just moments from cafes, shopping centres, sporting facilities, schools and the Mighty Murray.



LAND 1,501 m²

For Sale

\$470,000 - \$490,000

Contact

Allison Minter

0419 593 801

allison.minter@ljhooker.com.au

Wayne Rees

0499 355 105

wayne.rees@ljhooker.com.au



Disclaimer: All information contained therein is gathered from relevant third parties sources. We cannot guarantee or give any warranty about the information provided. Interested parties must rely solely on their own enquiries.

LJ Hooker Echuca
(03) 5480 6922

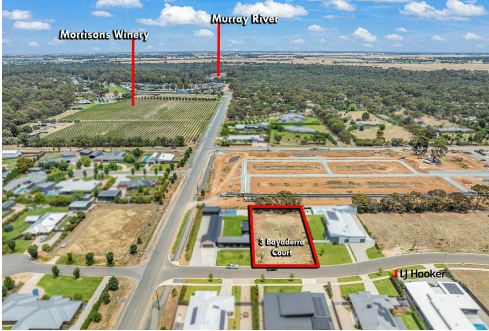
Call us now to avoid disappointment...

More About this Property

Property ID	RPXFBW
Property Type	Residential
Land Area	1501 m ²

Allison Minter 0419 593 801
Principal | allison.minter@ljhooker.com.au
Wayne Rees 0499 355 105
Sales Consultant | wayne.rees@ljhooker.com.au

LJ Hooker Echuca (03) 5480 6922
1/249 Ansthuther Street, ECHUCA VIC 3564
echuca.ljhooker.com.au | echuca@ljhooker.com.au



LJ Hooker Echuca
(03) 5480 6922

Disclaimer: All information contained therein is gathered from relevant third parties sources.
We cannot guarantee or give any warranty about the information provided. Interested parties must rely solely on their own enquiries.