



## Maheno, 35 Main Road

### SPACE, VIEWS & POTENTIAL

Discover the opportunity to secure a substantial 4047sqm section (1 Acre) right in the heart of Maheno. With power and water already connected, this property is ready for you to bring your vision to life.

The section has been thoroughly cut back and landscaped, creating a clean and inviting canvas for its new owner. Whether you're looking to build your dream home, establish a lifestyle retreat, or invest in a generous landholding, this site is packed with potential.

Soak in the breathtaking views towards the Kakanui Hills, offering a beautiful backdrop that changes with the seasons. With plenty of space to design and create, you'll enjoy the perfect blend of rural outlook and township convenience.

Properties of this size in Maheno are rare to find.



LAND 4,047 m2

**For Sale**

Buyer Enquiry Over \$169,000

**Contact**

**Mitchell Laughton**

0273518118

[mitchell@ljoamaru.co.nz](mailto:mitchell@ljoamaru.co.nz)



**Disclaimer:** All information contained therein is gathered from relevant third parties sources. We cannot guarantee or give any warranty about the information provided. Interested parties must rely solely on their own enquiries.

**LJ Hooker Oamaru**  
**(03) 434 9014**  
 Robertson Real Estate Limited



For Sale by Deadline closing at 4.00pm on Wednesday, 16 October 2025 at LJ Hooker,  
193 Thames Street, Oamaru (unless sold prior).

Buyer Enquiry Over \$169,000

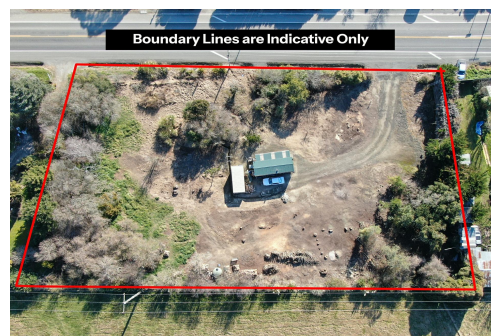
Contact Mitchell Laughton at 027 351 8118

## More About this Property

|   |             |
|---|-------------|
| <b>Property ID</b>                            | VZ0GF3      |
| <b>Property Type</b>                          | Residential |
| <b>Land Area</b>                              | 4047 m2     |
| <b>Licensed Real Estate Agents (REAA2008)</b> |             |

**Mitchell Laughton 0273518118**  
Rural Specialist | [mitchell@ljhoamaru.co.nz](mailto:mitchell@ljhoamaru.co.nz)

**LJ Hooker Oamaru (03) 434 9014**  
Robertson Real Estate Limited  
193 Thames Street, OAMARU 9400  
[oamaru.ljhooker.co.nz](http://oamaru.ljhooker.co.nz) | [info@ljhoamaru.co.nz](mailto:info@ljhoamaru.co.nz)



**Disclaimer:** All information contained therein is gathered from relevant third parties sources.  
We cannot guarantee or give any warranty about the information provided. Interested parties must rely solely on their own enquiries.

**LJ Hooker Oamaru**  
**(03) 434 9014**  
Robertson Real Estate Limited