



Lindenow South, Lot 36/44 Hawkins Crescent

LEVEL BUILDING BLOCK

Here is your opportunity to secure one of the largest allotments in Mountain View Estate. Close to the Lindenow South Recreation Reserve, local Primary School and the South Pines Golf Club, this beauty has mains power and town water available with a sealed road frontage. Comprising a huge 5094m2 the block offers level ground for building with northerly views to the mountains.



LAND 5,094 m2

For Sale
Please Call

Contact
Kelly Quirke
0427 064 816
kquirke@ljhookerbairnsdale.com.au



Disclaimer: All information contained therein is gathered from relevant third parties sources. We cannot guarantee or give any warranty about the information provided. Interested parties must rely solely on their own enquiries.

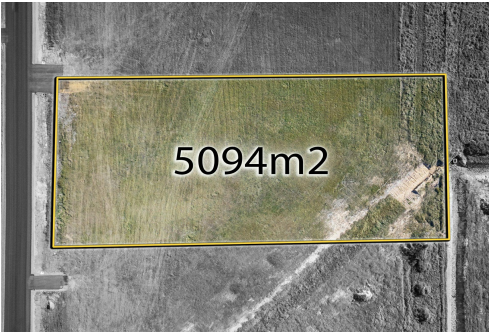
LJ Hooker Bairnsdale
(03) 5152 4172

More About this Property

Property ID	14AKFBF
Property Type	Residential
Land Area	5094 m2

Kelly Quirke 0427 064 816
Sales Consultant | kquirke@ljhookerbairnsdale.com.au

LJ Hooker Bairnsdale (03) 5152 4172
195 Main Street, BAIRNSDALE VIC 3875
bairnsdale.ljhooker.com.au | bairnsdale@ljhookerbairnsdale.com.au



Disclaimer: All information contained therein is gathered from relevant third parties sources.
We cannot guarantee or give any warranty about the information provided. Interested parties must rely solely on their own enquiries.

LJ Hooker Bairnsdale
(03) 5152 4172